

# VOTER INFORMATION GUIDE

GUÍA DE  
INFORMACION  
DE VOTANTE

APRIL 1, 2025 CONSOLIDATED ELECTION

1 de Abril de 2025 Elección Consolidada

Save Time  
Beat the Line

**VOTE EARLY!**

Ahorre Tiempo  
Evite la Línea

**¡VOTE TEMPRANO!**

Page 10/Página 10

## Kane County Election Information

Office Number: (630) 232-5990

Spanish Line: (630) 232-5991

8:30am - 4:30pm Monday thru Friday

5:00am - 7:00pm on Tuesday, April 1, 2025

## Condado de Kane Información Electoral

Número de Oficina: (630) 232-5990

Línea en Español: (630) 232-5991

8:30am - 4:30pm de Lunes a Viernes

5:00am - 7:00pm el Martes, 1 de Abril de 2025



# John A. Cunningham

## Kane County Clerk

Secretario del Condado de Kane



Voter Registration Card Explanation/Explicación de Tarjeta de Inscripción de Electores.....	2
Become an Election Judge/Conviértete en un Juez Electoral.....	3
Notice of CONSOLIDATED ELECTION/Notificación de Elección Consolidada .....	4-9
Early Voting Locations, Dates, Times/Centros de Votación Temprana .....	10-11
Polling Places (Election Day)/Centros de Votación (Día de Elección).....	12-14
2025 CONSOLIDATED ELECTION Ballot/Votación de Elección Consolidada 2025.....	15-33
Three ways to Vote & Verity Duo Voting Process/Proceso de Votación de Verity Duo .....	34-35

[Clerk.kaneCountyil.gov](http://Clerk.kaneCountyil.gov)

Legal Notice and Information Guide (PRINTED IN SPANISH REQUIRED BY FEDERAL LAW) Aviso Legal y Guía Informativa para el Votante (IMPRESIÓN EN ESPAÑOL REQUERIDA POR LEY FEDERAL)

# Kane County Voter Registration Card Explanation

## Explicación de Tarjeta de Inscripción de Electores

Use the QR Code to see if you are Registered to Vote in Kane County



**John A. Cunningham**  
Kane County Clerk  
719 S. Batavia Ave.  
Geneva, Illinois 60134

**VOTING DISTRICTS/DISTRITOS VOTANTES**

CONG	LEG	REP	CO BD	TWP	PCT
14	42	83	8	AU	11
CITY	WARD	VILG	PARK	LIBR	FIRE
GEN			FXV	OSW	MON
CC	SCHL	RSD	SD	SW	WD
516	129	KAN			

**Voting Districts/Distritos Votantes**

- CONG - Congressional District/*Distrito del Congreso*
- LEG - Legislative District/*Distrito del Legislativo*
- REP - Representative District/*Distrito Representativo*
- CO BD - County Board District/*Junta Directiva del Distrito*
- TWP - Township/*Municipio*
- PCT - Precinct/*Distrito Electoral*
- CITY - City/*Ciudad*
- WARD - Ward/*Distrito*
- VILG - Village/*Aldea*
- PARK - Park District/*Distrito del Parque*
- LIBR - Library District/*Distrito de la Biblioteca*
- FIRE - Fire Protection District/  
*Distrito de Protección contra incendios*
- CC - Community College District/  
*Distrito del Colegio de la Comunidad*
- SCHL - School District/*Distrito de la Escuela*
- RSD - Regional School District/  
*Distrito de la Escuela Regional*
- SD - Sanitary District/*Distrito Sanitario*
- SW - Solid Waste District/*Distrito sólido de Desecho*
- WD - Water Retention District/*Distrito de Retención de agua*

**THE POLLING PLACE FOR YOUR ADDRESS IS:  
EL CENTRO DE VOTACION PARA SU DIRECCION ES:**

GENEVA COMM HIGH SCHOOL  
416 MC KINLEY AVE  
GENEVA, IL 60134

JOHN A CUNNINGHAM  
123 MAIN ST  
GENEVA, IL 60134

0123456

★ YOU WILL BE NOTIFIED IF YOUR POLLING PLACE CHANGES ★  
SE LE NOTIFICARA SI SU CENTRO DE VOTACION CAMBIA

**Your Election Day Polling Place**

**Su Lugar de Votación en el día de Elección**

This is not your early-voting site. For early voting, you may vote at any location in Kane County. See Page 10-11 for early voting locations.

*Este no es su sitio de votación temprana. Para votación temprana, usted podrá votar en cualquier ubicación en el Condado de Kane. Véa la página 10-11 para ubicaciones de votación temprana.*

# **BECOME AN ELECTION JUDGE!**

## **Do You Have Basic Knowledge Of Data Entry Using a Computer?**

Earn: **\$250** (with training) per election

Must be a registered voter in Kane County

If you are Interested in becoming an Election Judge

Send us an E-mail at **Morefieldjames@KaneCountyIL.gov**

Or complete this form and mail to the County Clerk's office

Or call Election Judge Coordinator @ (630) 232-5994

Please complete and send to:

John A. Cunningham  
Kane County Clerk  
719 S. Batavia Ave.  
Geneva, IL 60134

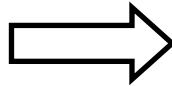
\_\_\_\_\_  
(Print Name)

\_\_\_\_\_  
(Print Address)

- YES! I am a registered voter. Home Phone # \_\_\_\_\_
- YES! I am bilingual in English/Spanish. Work Phone # \_\_\_\_\_
- I am affiliated with the Republican Party. Cell Phone # \_\_\_\_\_
- I am affiliated with the Democratic Party. Email Address \_\_\_\_\_
- I have some computer experience (Explain) \_\_\_\_\_

\_\_\_\_\_  
(SIGNATURE)

Use the QR Code to fill  
out the online  
Election Judge Form



A list of the elections judges is available for inspection at the Kane County Clerk's Office  
719 S. Batavia Ave Bldg. B  
Geneva IL, 60134

# NOTICE OF CONSOLIDATED ELECTION

Notice is hereby given that a **CONSOLIDATED ELECTION** will be held at all polling places in Kane County on **TUESDAY, APRIL 1, 2025**

## Candidates will be elected to the following offices:

### CITIES

AURORA CITY - Mayor, Alderman  
 BATAVIA CITY - Mayor, Clerk, Treasurer, Alderman  
 ELGIN CITY - Councilman  
 GENEVA CITY - Mayor, Clerk, Treasurer, Alderman  
 ST. CHARLES CITY - Mayor, Clerk, Treasurer, Alderman

### VILLAGES

ALGONQUIN VILLAGE - President, Clerk, Trustees  
 BARRINGTON HILLS VILLAGE - President, Trustees  
 BARTLETT VILLAGE - President, Clerk, Trustees  
 BIG ROCK VILLAGE - Trustees  
 BURLINGTON VILLAGE - President, Trustees  
 CAMPTON HILLS - Trustees  
 CARPENTERSVILLE VILLAGE - President, Trustees  
 EAST DUNDEE VILLAGE - President, Trustee  
 ELBURN VILLAGE - President, Trustees  
 GILBERTS VILLAGE - President, Trustees  
 HAMPSHIRE VILLAGE - President, Trustees  
 HOFFMAN ESTATES VILLAGE - President, Clerk, Trustees  
 HUNTLEY VILLAGE - President, Trustees  
 KANEVILLE VILLAGE - President, Trustees  
 LILY LAKE VILLAGE - President, Trustees  
 MAPLE PARK VILLAGE - President, Trustees  
 MONTGOMERY VILLAGE - President, Clerk, Trustees  
 NORTH AURORA VILLAGE - President, Clerk, Trustees  
 NORTH AURORA VILLAGE MESSENGER LIBRARY - Trustees  
 PINGREE GROVE VILLAGE - Trustees  
 SLEEPY HOLLOW VILLAGE - President, Clerk, Trustees  
 SOUTH ELGIN VILLAGE - President, Clerk, Trustees  
 SUGAR GROVE VILLAGE - President, Trustees  
 VIRGIL VILLAGE - Trustees  
 WAYNE VILLAGE - Trustees  
 WEST DUNDEE VILLAGE - President, Trustees

### TOWNSHIPS

AURORA TOWNSHIP - Supervisor, Clerk, Assessor, Highway Commissioner, Trustees  
 BATAVIA TOWNSHIP - Supervisor, Clerk, Assessor, Highway Commissioner, Trustees  
 BIG ROCK TOWNSHIP - Supervisor, Clerk, Assessor, Highway Commissioner, Trustees  
 BLACKBERRY TOWNSHIP - Supervisor, Clerk, Assessor, Highway Commissioner, Trustees  
 BURLINGTON TOWNSHIP - Supervisor, Clerk, Assessor, Highway Commissioner, Trustees  
 CAMPTON TOWNSHIP - Supervisor, Clerk, Assessor, Highway Commissioner, Trustees  
 DUNDEE TOWNSHIP - Supervisor, Clerk, Assessor, Highway Commissioner, Trustees  
 ELGIN TOWNSHIP - Supervisor, Clerk, Assessor, Highway Commissioner, Trustees  
 GENEVA TOWNSHIP - Supervisor, Clerk, Assessor, Highway Commissioner, Trustees  
 HAMPSHIRE TOWNSHIP - Supervisor, Clerk, Assessor, Highway Commissioner, Trustees  
 KANEVILLE TOWNSHIP - Supervisor, Clerk, Assessor, Highway Commissioner, Trustees  
 PLATO TOWNSHIP - Supervisor, Clerk, Assessor, Highway Commissioner, Trustees  
 RUTLAND TOWNSHIP - Supervisor, Clerk, Assessor, Highway Commissioner, Trustees  
 ST CHARLES TOWNSHIP - Supervisor, Clerk, Assessor, Highway Commissioner, Trustees  
 SUGAR GROVE TOWNSHIP - Supervisor, Clerk, Assessor, Highway Commissioner, Trustees  
 VIRGIL TOWNSHIP - Supervisor, Clerk, Assessor, Highway Commissioner, Trustees

### PARK DISTRICTS

BARTLETT PARK DISTRICT - Commissioner  
 BATAVIA PARK DISTRICT - Commissioner  
 BIG ROCK PARK DISTRICT - Commissioner  
 DUNDEE TOWNSHIP PARK DISTRICT - Commissioner  
 FOX VALLEY PARK DISTRICT - Commissioner  
 GENEVA PARK DISTRICT - Commissioner  
 HAMPSHIRE PARK DISTRICT - Commissioner  
 HUNTLEY PARK DISTRICT - Commissioner  
 ST CHARLES PARK DISTRICT - Commissioner  
 SUGAR GROVE PARK DISTRICT - Commissioner

### LIBRARY DISTRICTS

ALGONQUIN AREA PUBLIC LIBRARY DISTRICT - Trustees  
 BARRINGTON PUBLIC LIBRARY DISTRICT - Trustees  
 BATAVIA PUBLIC LIBRARY DISTRICT - Trustees  
 FOX VALLEY RIVER PUBLIC LIBRARY DISTRICT - Trustees  
 ELLA JOHNSON MEMORIAL PUBLIC LIBRARY - Trustees  
 GAIL BORDEN PUBLIC LIBRARY DISTRICT - Trustees  
 GENEVA PUBLIC LIBRARY DISTRICT - Trustees  
 HUNTLEY AREA PUBLIC LIBRARY DISTRICT - Trustees  
 KANEVILLE PUBLIC LIBRARY DISTRICT - Trustees  
 MAPLE PARK LIBRARY DISTRICT - Trustees  
 OSWEGO PUBLIC LIBRARY DISTRICT - Trustees  
 ST. CHARLES PUBLIC LIBRARY DISTRICT - Trustees  
 SUGAR GROVE PUBLIC LIBRARY DISTRICT - Trustees  
 TOWN & COUNTRY PUBLIC LIBRARY DISTRICT - Trustees

### REGIONAL SCHOOL BOARD

KANE COUNTY REGIONAL SCHOOL BOARD - Trustees  
 DeKALB COUNTY REGIONAL SCHOOL BOARD - Trustees  
 GRUNDY & KENDALL COUNTIES REGIONAL SCHOOL BOARD - Trustees  
 LAKE COUNTY REGIONAL SCHOOL BOARD - Trustees  
 McHENRY COUNTY REGIONAL SCHOOL BOARD - Trustees

### SCHOOL BOARD MEMBERS

SCHOOL DISTRICT U-46  
 BATAVIA SCHOOL DISTRICT #101  
 YORKVILLE COMMUNITY UNIT SCHOOL DISTRICT #115  
 AURORA WEST SCHOOL DISTRICT #129  
 AURORA EAST SCHOOL DISTRICT #131  
 HUNTLEY CONSOLIDATED SCHOOL DISTRICT #158  
 BARRINGTON COMMUNITY UNIT SCHOOL DISTRICT #220  
 DUNDEE COMMUNITY UNIT SCHOOL DISTRICT #300  
 CENTRAL COMMUNITY UNIT SCHOOL DISTRICT #301  
 KANELAND COMMUNITY UNIT SCHOOL DISTRICT #302  
 ST. CHARLES COMMUNITY UNIT SCHOOL DISTRICT #303  
 GENEVA COMMUNITY UNIT SCHOOL DISTRICT #304  
 OSWEGO COMMUNITY UNIT SCHOOL DISTRICT #308  
 SYCAMORE COMMUNITY UNIT SCHOOL DISTRICT #427  
 HINCKLEY-BIG ROCK COMMUNITY UNIT SCHOOL DISTRICT #429

### COMMUNITY COLLEGE DISTRICT TRUSTEES

ELGIN COMMUNITY COLLEGE DISTRICT #509  
 WILLIAM RAINEY HARPER COMMUNITY COLLEGE DISTRICT #512  
 WAUBONSEE COMMUNITY COLLEGE DISTRICT #516  
 KISHWAUKEE COMMUNITY COLLEGE DISTRICT #523  
 McHENRY COUNTY COLLEGE DISTRICT #528

### FIRE PROTECTION DISTRICTS

ALGONQUIN-LAKE IN THE HILLS FIRE PROTECTION DISTRICT - Trustees  
 CARPENTERSVILLE & COUNTRYSIDE FIRE PROTECTION DISTRICT - Trustees  
 EAST DUNDEE & COUNTRYSIDE FIRE PROTECTION DISTRICT - Trustees  
 ELBURN & COUNTRYSIDE FIRE PROTECTION DISTRICT - Trustees  
 FOX RIVER & COUNTRYSIDE FIRE PROTECTION RESCUE DISTRICT - Trustees  
 HAMPSHIRE FIRE PROTECTION DISTRICT - Trustees  
 HUNTLEY FIRE PROTECTION DISTRICT - Trustees  
 NORTH AURORA FIRE PROTECTION DISTRICT - Trustees  
 SUGAR GROVE FIRE PROTECTION DISTRICT - Trustees

Fox Metro Water Reclamation: - Trustee

The polls at the election will be open at 6:00 o'clock A.M. and will continue to be open until 7:00 o'clock P.M. of that day.

Dated: March 9, 2025 Kane County Clerk's Office



*John A. Cunningham*



**JOHN A. CUNNINGHAM, KANE COUNTY CLERK**  
 Secretario del Condado de Kane  
 KANE COUNTY / CONDADO DE KANE



# AVISO DE ELECCIÓN CONSOLIDADA

Por la presente se da aviso de que se llevarán acabo las votaciones de la **ELECCIÓN CONSOLIDADA** en todos los lugares de votacion en el Condado de Kane el **MARTES, 1 DE ABRIL DE 2025**

## Se elegirán candidatos para los siguientes puestos:

### CIUDAD

CIUDAD DE AURORA - Alcalde, *Consejales*  
CIUDAD DE BATAVIA - Alcalde, *Secretario, Tesorero, Consejales*  
CIUDAD DE ELGIN - *Concejales*  
CIUDAD DE GENEVA - Alcalde, *Secretario, Tesorero, Consejales*  
CIUDAD DE ST CHARLES - Alcalde, *Secretario, Tesorero, Consejales*

### ALDEA

ALDEA DE ALGONQUIN - *Presidente, Secretario, Fideicomisario*  
ALDEA DE BARRINGTON HILLS - *Presidente, Fideicomisario*  
ALDEA DE BARTLETT - *Presidente, Secretario, Fideicomisario*  
ALDEA DE BIG ROCK - *Fideicomisario*  
ALDEA DE BURLINGTON - *Presidente, Fideicomisario*  
ALDEA DE CAMPTON HILLS - *Fideicomisario*  
ALDEA DE CARPENTERSVILLE - *Presidente, Fideicomisario*  
ALDEA DE EAST DUNDEE - *Presidente, Fideicomisario*  
ALDEA DE ELBURN - *Presidente, Fideicomisario*  
ALDEA DE GILBERTS - *Presidente, Fideicomisario*  
ALDEA DE HAMPSHIRE - *Presidente, Fideicomisario*  
ALDEA DE HOFFMAN ESTATES - *Presidente, Secretario, Fideicomisario*  
ALDEA DE HUNTLEY - *Presidente, Fideicomisario*  
ALDEA DE KANEVILLE - *Presidente, Fideicomisario*  
ALDEA DE LILY LAKE - *Presidente, Fideicomisario*  
ALDEA DE MAPLE PARK - *Presidente, Fideicomisario*  
ALDEA DE MONTGOMERY - *Presidente, Secretario, Fideicomisario*  
ALDEA DE NORTH AURORA - *Presidente, Secretario, Fideicomisario*  
ALDEA DE NORTH AURORA DE BIBLIOTECA PUBLICA DE MESSENGER- *Fideicomisario*  
ALDEA DE PINGREE GROVE VILLAGE - *Fideicomisario*  
ALDEA DE SLEEPY HOLLOW - *Presidente, Secretario, Fideicomisario*  
ALDEA DE SOUTH ELGIN - *Presidente, Secretario, Fideicomisario*  
ALDEA DE SUGAR GROVE - *Presidente, Fideicomisario*  
ALDEA DE VIRGIL - *Fideicomisario*  
ALDEA DE WAYNE - *Fideicomisario*  
ALDEA DE WEST DUNDEE - *Presidente, Fideicomisario*

### TOWNSHIP

AURORA TOWNSHIP - *Supervisor, Secretario, Tasador, Comisionado de Carreteras, Fideicomisario*  
BATAVIA TOWNSHIP - *Supervisor, Secretario, Tasador, Comisionado de Carreteras, Fideicomisario*  
BIG ROCK TOWNSHIP - *Supervisor, Secretario, Tasador, Comisionado de Carreteras, Fideicomisario*  
BLACKBERRY TOWNSHIP - *Supervisor, Secretario, Tasador, Comisionado de Carreteras, Fideicomisario*  
BURLINGTON TOWNSHIP - *Supervisor, Secretario, Tasador, Comisionado de Carreteras, Fideicomisario*  
CAMPTON TOWNSHIP - *Supervisor, Secretario, Tasador, Comisionado de Carreteras, Fideicomisario*  
DUNDEE TOWNSHIP - *Supervisor, Secretario, Tasador, Comisionado de Carreteras, Fideicomisario*  
ELGIN TOWNSHIP - *Supervisor, Secretario, Tasador, Comisionado de Carreteras, Fideicomisario*  
GENEVA TOWNSHIP - *Supervisor, Secretario, Tasador, Comisionado de Carreteras, Fideicomisario*  
HAMPSHIRE TOWNSHIP - *Supervisor, Secretario, Tasador, Comisionado de Carreteras, Fideicomisario*  
KANEVILLE TOWNSHIP - *Supervisor, Secretario, Tasador, Comisionado de Carreteras, Fideicomisario*  
PLATO TOWNSHIP - *Supervisor, Secretario, Tasador, Comisionado de Carreteras, Fideicomisario*  
RUTHLAND TOWNSHIP - *Supervisor, Secretario, Tasador, Comisionado de Carreteras, Fideicomisario*  
ST CHARLES TOWNSHIP - *Supervisor, Secretario, Tasador, Comisionado de Carreteras, Fideicomisario*  
SUGAR GROVE TOWNSHIP - *Supervisor, Secretario, Tasador, Comisionado de Carreteras, Fideicomisario*  
VIRGIL TOWNSHIP - *Supervisor, Secretario, Tasador, Comisionado de Carreteras, Fideicomisario*

### DISTRITOS DE PARQUES

DISTRITO DE PARQUES DE BARTLETT - *Comisionados*  
DISTRITO DE PARQUES DE BATAVIA - *Comisionados*  
DISTRITO DE PARQUES DE BIG ROCK - *Comisionados*  
DISTRITO DE PARQUES DE DUNDEE - *Comisionados*  
DISTRITO DE PARQUES DE FOX VALLEY - *Comisionados*  
DISTRITO DE PARQUES DE GENEVA - *Comisionados*  
DISTRITO DE PARQUES DE HAMPSHIRE - *Comisionados*  
DISTRITO DE PARQUES DE HUNTLEY - *Comisionados*  
DISTRITO DE PARQUES DE ST CHARLES - *Comisionados*  
DISTRITO DE PARQUES DE SUGAR GROVE - *Comisionados*

### DISTRITO DE BIBLIOTECA

DISTRITO DE BIBLIOTECA PÚBLICA DE ALGONQUIN - *Fideicomisario*  
DISTRITO DE BIBLIOTECA PÚBLICA DE BARRINGTON - *Fideicomisario*  
DISTRITO DE BIBLIOTECA PÚBLICA DE BATAVIA - *Fideicomisario*  
DISTRITO DE BIBLIOTECA PÚBLICA DE FOX RIVER VALLEY - *Fideicomisario*  
DISTRITO DE BIBLIOTECA PÚBLICA DE ELLA JOHNSON - *Fideicomisario*  
DISTRITO DE BIBLIOTECA PÚBLICA DE GAIL BORDEN - *Fideicomisario*  
DISTRITO DE BIBLIOTECA PÚBLICA DE GENEVA - *Fideicomisario*  
DISTRITO DE BIBLIOTECA PÚBLICA DE LA ZONA DE HUNTLEY - *Fideicomisario*  
DISTRITO DE BIBLIOTECA PÚBLICA DE KANEVILLE - *Fideicomisario*  
DISTRITO DE BIBLIOTECA PÚBLICA DE MAPLE PARK - *Fideicomisario*  
DISTRITO DE BIBLIOTECA PÚBLICA DE OSWEGO - *Fideicomisario*  
DISTRITO DE BIBLIOTECA PÚBLICA DE ST. CHARLES - *Fideicomisario*  
DISTRITO DE BIBLIOTECA PÚBLICA DE SUGAR GROVE - *Fideicomisario*  
DISTRITO DE BIBLIOTECA PÚBLICA DE TOWN & COUNTRY - *Fideicomisario*

### CONSEJO ESCOLAR REGIONAL

CONSEJO ESCOLAR REGIONAL DEL DONDADO DE KANE - *Fideicomisario*  
CONSEJO ESCOLAR REGIONAL DEL DONDADO DE DeKALB - *Fideicomisario*  
CONSEJO ESCOLAR REGIONAL DEL LOS CONDADOS DE GRUNDY Y KENDALL - *Fideicomisario*  
CONSEJO ESCOLAR REGIONAL DEL DONDADO DE LAKE - *Fideicomisario*  
CONSEJO ESCOLAR REGIONAL DEL DONDADO DE McHENRY - *Fideicomisario*

### MIEMBROS DEL CONSEJO ESCOLAR

DISTRITO ESCOLAR U-46  
DISTRITO ESCOLAR DE BATAVIA #101  
DISTRITO ESCOLAR COMUNITARIO DE UNIDAD DE YORKVILLE #115  
DISTRITO ESCOLAR DE WEST AURORA #129  
DISTRITO ESCOLAR DE EAST AURORA #131  
DISTRITO ESCOLAR DE CONSOLIDADO DE HUNTELY #158  
DISTRITO ESCOLAR COMUNITARIO DE UNIDAD DE BARRINGTON #220  
DISTRITO ESCOLAR COMUNITARIO DE UNIDAD DE DUNDEE #300  
DISTRITO ESCOLAR COMUNITARIO DE UNIDAD CENTRAL #301  
DISTRITO ESCOLAR COMUNITARIO DE UNIDAD DE KANELAND #302  
DISTRITO ESCOLAR COMUNITARIO DE UNIDAD DE ST CHARLES #303  
DISTRITO ESCOLAR COMUNITARIO DE UNIDAD DE GENEVA #3046  
DISTRITO ESCOLAR COMUNITARIO DE UNIDAD DE OSWEGO #308  
DISTRITO ESCOLAR COMUNITARIO DE UNIDAD DE SYCAMORE #427  
DISTRITO ESCOLAR COMUNITARIO DE UNIDAD DE HINCKLEY-BIG ROCK #429

### FIDEICOMISARIO DEL DISTRITO DE COMMUNITY COLLEGE

DISTRITO DEL COMMUNITY COLLEGE ELGIN #509  
DISTRITO DEL COMMUNITY COLLEGE WILLIAM RAINEY HARPER #512  
DISTRITO DEL COMMUNITY COLLEGE WAUBONSEE #516  
DISTRITO DEL COMMUNITY COLLEGE KISHWAUKEE #523  
DISTRITO DEL COMMUNITY COLLEGE DEL CONDADO DE McHENRY #528

### DISTRITOS DE PROTECCIÓN CONTRA INCENDIOS

DISTRITO DE PROTECCIÓN INCENDIOS DE ALGONQUIN-LAKE IN THE HILLS - *Fideicomisario*  
DISTRITO DE PROTECCIÓN INCENDIOS DE CARPENTERSVILLE Y COUNTRYSIDE - *Fideicomisario*  
DISTRITO DE PROTECCIÓN INCENDIOS DE EAST DUNDEE Y COUNTRYSIDE - *Fideicomisario*  
DISTRITO DE PROTECCIÓN INCENDIOS DE ELBURN Y COUNTRYSIDE - *Fideicomisario*  
DISTRITO DE PROTECCIÓN INCENDIOS DE FOX RIVER Y COUNTRYSIDE - *Fideicomisario*  
DISTRITO DE PROTECCIÓN INCENDIOS DE HAMPSHIRE - *Fideicomisario*  
DISTRITO DE PROTECCIÓN INCENDIOS DE HUNTLEY - *Fideicomisario*  
DISTRITO DE PROTECCIÓN INCENDIOS DE NORTH AURORA - *Fideicomisario*  
DISTRITO DE PROTECCIÓN INCENDIOS DE SUGAR GROVE - *Fideicomisario*

**Fox Metro Water Reclamation:** - *Fideicomisario*

Los centros de votacion en la eleccion estarán abiertos a las 6:00 en punto A.M. y continuarán hasta las 7:00 en punto P.M. del día.

**Fechado: March 9, 2025** Oficina Kane County Clerk



**JOHN A. CUNNINGHAM, KANE COUNTY CLERK**  
**Secretario del Condado de Kane**  
KANE COUNTY / CONDADO DE KANE

# NOTICE OF PUBLIC QUESTIONS

NOTICE IS HEREBY GIVEN that at the election to be held on **Tuesday, April 1, 2025**, the following proposition will be submitted to the voters of the political or governmental subdivisions enumerated below:

<b>Campton Township</b>	Shall Campton Township issue bonds to finance the acquisition, maintenance, development, rehabilitation and renovation of open space lands for open space purposes as provided by the Township Open Space Article of the Township Code and levy and collect property taxes, in excess of any other tax authorized to be levied by the township, sufficient to meet the principal and interest bonds as they mature, but not in an amount in excess of \$17.2 million?
<b>Campton Township Cemetery</b>	“Shall the limiting rate under the Property Tax Extension Limitation Law for the Campton Township Cemetery Association be increased in the amount of .0073?  This means the taxpayer would pay an additional \$7.30 per \$100,000 net taxable value.”
<b>Ella Johnson Library</b>	Shall bonds of the Ella Johnson Memorial Public Library District, Kane County, Illinois, in the amount of \$15,000,000 be issued for the purpose of erecting a new library building located in Pingree Grove, Illinois, and furnishing necessary equipment and acquiring electronic data storage and retrieval facilities in connection therewith?
<b>Kane County</b>	To pay for public safety purposes, shall the County of Kane be authorized to impose an increase on its share of local sales taxes by 0.75%?  This would mean that a consumer would pay an additional \$0.75 in sales tax for every \$100 of tangible personal property bought at retail.
<b>Kaneland Community Unit School District Number 302</b>	Shall the Board of Education of Kaneland Community Unit School District Number 302, Kane and DeKalb Counties, Illinois, alter, repair and equip school buildings and improve the sites thereof, including but not limited to repairing and replacing infrastructure and mechanical systems; replacing roofs and updating playgrounds at the elementary school buildings; improving learning spaces, restrooms, the main entrance and athletic facilities at the Kaneland High School Building and building and equipping a field house addition thereto; build and equip maintenance and transportation facilities; and issue its bonds to the amount of \$140,274,000 for the purpose of paying the costs thereof?

Referenda questions can be viewed on our website, [clerk.kanecountyil.gov](http://clerk.kanecountyil.gov)

The polls at the election will be open at 6:00 o'clock A.M. and will continue to be open until 7:00 o'clock P.M. of that day.

Dated: **March 9, 2025** Kane County Clerk's Office




**JOHN A. CUNNINGHAM, KANE COUNTY CLERK**  
*Secretario del Condado de Kane*  
 KANE COUNTY / CONDADO DE KANE

# NOTICE OF PUBLIC QUESTIONS

NOTICE IS HEREBY GIVEN that at the election to be held on **Tuesday, April 1, 2025**, the following proposition will be submitted to the voters of the political or governmental subdivisions enumerated below:

<b>Kaneville Fire Protection District</b>	<p>Shall the limiting rate under the Property Tax Extension Limitation Law for the Kaneville Fire Protection District, Kane County, Illinois, be increased by an additional amount equal to 0.29% above the limiting rate for fire protection and ambulance purposes for levy year 2023 and be equal to 0.80168% of the equalized assessed value of the taxable property therein for levy year 2025?</p> <p>1) The approximate amount of taxes extendable at the most recent extended limiting rate is \$332,303.42, and the approximate amount of taxes extendable if the proposition is approved is \$520,640.</p> <p>(2) For the 2025 levy year the approximate amount of the additional tax extendable against property containing a single-family residence and having a fair market value at the time of referendum of \$100,000 is estimated to be \$96.67.</p> <p>(3) If the proposition is approved, the aggregate extension for 2025 will be determined by the limiting rate set forth in the proposition, rather than the otherwise applicable limiting rate calculated under the provisions of the Property Tax Extension Limitation Law (commonly known as the Property Tax Cap Law).</p>
<b>Sycamore School District 427</b>	<p>Shall the members of the Board of Education of Sycamore Community Unit School District No. 427, DeKalb and Kane Counties, Illinois, be elected at large and without restriction by area of residence within the school district?</p>
<b>Village of Sugar Grove</b>	<p>Should the Village of Sugar Grove's approval of "The Grove," a development project by Sugar Grove LLC/Crown Community Development, located near Interstate 88 and Illinois Route 47, be immediately reversed using all necessary and lawful measures?</p>

Referenda questions can be viewed on our website, [clerk.kanecountyil.gov](http://clerk.kanecountyil.gov)

The polls at the election will be open at 6:00 o'clock A.M. and will continue to be open until 7:00 o'clock P.M. of that day.

Dated: **March 9, 2025** Kane County Clerk's Office



**JOHN A. CUNNINGHAM, KANE COUNTY CLERK**  
*Secretario del Condado de Kane*  
KANE COUNTY / CONDADO DE KANE



**NOTIFICACIÓN DE PREGUNTAS PÚBLICAS**

**SE DA AVISO** que en la elección que se celebrará el **Martes, 1 de Abril de 2025**, las siguientes propuestas se presentarán a los votantes de las subdivisiones políticas o gubernamentales enumeradas a continuación:

<b>Campton Township</b>	Esta de acuerdo con que el municipio de Campton emita bonos para financiar la adquisición, el mantenimiento, el desarrollo, la rehabilitación y la renovación de terrenos de espacio abierto para fines de espacios abiertos según lo dispuesto por el Artículo de Espacios Abiertos Municipales del Código Municipal, y con que imponga y recaude impuestos sobre bienes inmuebles, además de cualquier otro impuesto que el municipio esté facultado a recaudar, suficientes para cumplir con los bonos de capital e intereses a medida que lleguen a su vencimiento, pero por un monto máximo de \$17.2 millones?
<b>Campton Township Cemetery</b>	<p>“Debería aumentarse la tasa límite bajo la Ley de Limitación de la Extensión del Impuesto a la Propiedad para la Asociación de Cementerios del Municipio de Campton en la cantidad de .0073?</p> <p>Esto significa que el contribuyente pagaría \$7.30 adicionales por cada \$100,000 de valor neto imponible.”</p>
<b>Ella Johnson Library</b>	Aprueba usted la emisión de bonos del Distrito de la Biblioteca Pública Ella Johnson Memorial, Condado de Kane, Illinois, por un monto de \$15,000,000 destinados a construir un nuevo edificio para la biblioteca en Pingree Grove, Illinois, equiparlo con el mobiliario necesario y adquirir sistemas de almacenamiento y recuperación de datos electrónicos relacionados con el proyecto?
<b>Kane County</b>	<p>Debería el Condado de Kane ser autorizado a imponer un aumento de 0.75% en su porcentaje de los impuestos locales sobre las ventas para el pago de fines de seguridad pública?</p> <p>Esto significaría que el consumidor pagaría un adicional de \$0.75 en impuesto sobre la venta por cada \$100 de bienes personales tangibles comprados al por menor.</p>
<b>Kaneland Community Unit School District Number 302</b>	Debe la Junta de Educación del Distrito Escolar de la Unidad Comunitaria de Kaneland Número 302, Condados de Kane y DeKalb, Illinois, alterar, reparar y equipar los edificios escolares y mejorar los sitios de los mismos, incluyendo pero no limitado a reparar y reemplazar la infraestructura y los sistemas mecánicos; reemplazar los techos y actualizar los patios de recreo en los edificios de las escuelas primarias; mejorar los espacios de aprendizaje, los baños, la entrada principal y las instalaciones deportivas en el edificio de Kaneland High School y construir y equipar una casa de campo adicional al mismo; construir y equipar instalaciones de mantenimiento y transporte; y emitir sus bonos por un monto de \$140,274,000 con el fin de pagar los costos de los mismos?

Preguntas de referendas pueden ser vistas en el sitio web, [clerk.kanecountyil.gov](http://clerk.kanecountyil.gov)

Los centros de votación en la elección estarán abiertos a las 6:00 en punto A.M. y continuarán hasta las 7:00 en punto P.M. del día.

**Fecha:** March 9, 2025 Oficina Kane County Clerk




**JOHN A. CUNNINGHAM, KANE COUNTY CLERK**  
*Secretario del Condado de Kane*  
 KANE COUNTY / CONDADO DE KANE



# NOTIFICACIÓN DE PREGUNTAS PÚBLICAS

SE DA AVISO que en la elección que se celebrará el **Martes, 1 de Abril de 2025**, las siguientes propuestas se presentarán a los votantes de las subdivisiones políticas o gubernamentales enumeradas a continuación:

<b>Kaneville Fire Protection District</b>	<p>Se debería aumentar la tasa de limitación bajo la Ley de Extensión de Impuestos Prediales para el Distrito de Protección contra Incendios de Kaneville, Condado Kane, Illinois, por una cantidad adicional igual a 0.29% por encima de la tasa de limitación para fines de protección contra incendios y ambulancia para el año impositivo 2023 y ser igual a 0.80168% del valor equiparado de la propiedad tasable allí situada para el año impositivo 2025?</p> <p>(1) La cantidad aproximada de impuestos prorrogables bajo la tasa de limitación más reciente es de \$332,303.42, y la cantidad aproximada de impuestos prorrogables si la propuesta es aprobada es de \$520,640.</p> <p>(2) Para el año impositivo 2025 la cantidad aproximada de impuestos adicionales prorrogables contra las propiedades de residencia familiar sencilla con un valor de mercado \$100,000 al momento del referéndum se estima será de \$96.67.</p> <p>(3) Si la propuesta es aprobada, la extensión global para el 2025 será determinada por la tasa de limitación postulada en la propuesta, en lugar de la tasa de limitación que de otra manera sería calculada bajo los provistos de la Ley de Extensión de Impuestos Prediales (comúnmente conocida como Property Tax Cap Law).</p>
<b>Sycamore School District 427</b>	Los miembros de la Junta de Educación del Distrito Escolar N° 427 de la Unidad Comunitaria de Sycamore, condados de DeKalb y Kane, Illinois, serán elegidos en general y sin restricciones por área de residencia dentro del Distrito escolar?
<b>Village of Sugar Grove</b>	Debería revocarse de manera inmediata, utilizando todas las medidas legales y necesarias, la aprobación que la Aldea de Sugar Grove le otorgó al proyecto de desarrollo "The Grove" del Sugar Grove LLC\Crown Community Development, ubicado cerca de la Interestatal 88 y la Ruta 47 de Illinois?

Preguntas de referendas pueden ser vistas en el sitio web, [clerk.kanecountyil.gov](http://clerk.kanecountyil.gov)

Los centros de votacion en la elección estarán abiertos a las 6:00 en punto A.M. y continuarán hasta las 7:00 en punto P.M. del día.

**Fecha:** March 9, 2025 Oficina Kane County Clerk



**JOHN A. CUNNINGHAM, KANE COUNTY CLERK**  
*Secretario del Condado de Kane*  
KANE COUNTY / CONDADO DE KANE

# Early Voting Sites for the 2025 CONSOLIDATED ELECTION

Centros de Votación Temprana para la Elección Consolidada 2025



## KANE COUNTY EARLY VOTING SITES

ISSUED BY JOHN A. CUNNINGHAM, KANE COUNTY CLERK  
[CLERK.KANECOUNTYIL.GOV/ELECTIONS](http://CLERK.KANECOUNTYIL.GOV/ELECTIONS) | 630-232-5990

### FOR THE CONSOLIDATED ELECTION APRIL 1, 2025

**EARLY VOTING – PLEASE READ**

Voters may begin voting early on **Friday, March 7, 2025** at the Kane County Clerk’s Office in Geneva and the Aurora Satellite Office (Monday through Friday, 8:30 AM – 4:30 PM).

**GRACE PERIOD VOTER REGISTRATION**

Those who do not register to vote by **Tuesday, March 4, 2025** may register to vote during the grace period voter registration at the Kane County Clerk’s Office in Geneva and the Aurora Satellite Office, beginning **Wednesday, March 5, 2025** (Monday through Friday, 8:30 AM – 4:30 PM). If you register to vote during the grace period and want to vote in the upcoming election you must vote at the time of registration.

### PARA LA ELECCIÓN CONSOLIDADA DEL CONDADO DE KANE 1 DE ABRIL, 2025

**LEER POR FAVOR - VOTACIÓN TEMPRANA**

Los votantes pueden votar temprano el **Viernes, 7 de Marzo, 2025** en la oficina del Secretario del Condado Kane en Geneva y en la oficina Satélite de Aurora (Lunes a Viernes 8:30 AM - 4:30 PM).

**REGISTRO DE VOTANTES DE PERIODO DE GRACIA**

Aquellos que no se registren para votar antes del **Martes, 4 de Marzo, 2025** pueden registrarse para votar durante el registro de votante de período de gracia. El registro de votante de período de gracia se llevará a cabo en la oficina del Secretario del Condado Kane en Geneva y en la oficina Satélite de Aurora, comenzando **Miércoles, 5 de Marzo, 2025** (Lunes a Viernes de 8:30 AM - 4:30 PM). Si se registra para votar durante el período de gracia y desea votar en la próxima elección, debe votar en el momento de la registración.

### PERMANENT EARLY & GRACE PERIOD VOTING LOCATIONS

#### LUGARES DE VOTACIÓN TEMPRANA PERMANENTES / PERIODO DE GRACIA

<u>KANE COUNTY CLERK’S OFFICE</u> 719 S Batavia Ave, Bldg. B, Geneva, 60134		<u>KANE COUNTY BRANCH COURT</u> 530 S Randall Rd, St Charles, 60174		<u>CLERK’S AURORA SATELLITE OFFICE</u> 5 E Downer Place, Aurora, 60505	
MARCH 17 - 21	8:30 AM - 4:30 PM	MARCH 17 - 21	8:30 AM - 4:30 PM	MARCH 17 - 21	8:30 AM - 4:30 PM
MARCH 22	9:00 AM - 12:00 PM	MARCH 22	9:00 AM - 12:00 PM	MARCH 22	9:00 AM - 12:00 PM
MARCH 23	10:00 AM - 4:00 PM	MARCH 23	10:00 AM - 4:00 PM	MARCH 23	10:00 AM - 4:00 PM
MARCH 24 - 28	8:30 AM - 7:00 PM	MARCH 24 - 28	8:30 AM - 7:00 PM	MARCH 24 - 28	8:30 AM - 7:00 PM
MARCH 29	8:00 AM - 4:00 PM	MARCH 29	8:00 AM - 4:00 PM	MARCH 29	8:00 AM - 4:00 PM
MARCH 30	10:00 AM - 4:00 PM	MARCH 30	10:00 AM - 4:00 PM	MARCH 30	10:00 AM - 4:00 PM
MARCH 31	8:30 AM - 4:30 PM	MARCH 31	8:30 AM - 4:00 PM	MARCH 31	8:30 AM - 4:00 PM
<u>CARPENTERSVILLE FIRE STATION NO. 93</u> 5000 Sleepy Hollow Rd, Carpentersville, 60110			<u>ELGIN TOWNSHIP</u> 729 S McLean Blvd, Elgin, 60123		
MARCH 17 - 21	9:00 AM - 5:00 PM	MARCH 17 - 21	9:00 AM - 5:00 PM	MARCH 17 - 21	9:00 AM - 5:00 PM
MARCH 22	9:00 AM - 12:00 PM	MARCH 22	9:00 AM - 12:00 PM	MARCH 22	9:00 AM - 12:00 PM
MARCH 23	10:00 AM - 4:00 PM	MARCH 23	10:00 AM - 4:00 PM	MARCH 23	10:00 AM - 4:00 PM
MARCH 24 - 28	9:00 AM - 7:00 PM	MARCH 24 - 28	9:00 AM - 7:00 PM	MARCH 24 - 28	9:00 AM - 7:00 PM
MARCH 29	8:00 AM - 4:00 PM	MARCH 29	8:00 AM - 4:00 PM	MARCH 29	8:00 AM - 4:00 PM
MARCH 30	10:00 AM - 4:00 PM	MARCH 30	10:00 AM - 4:00 PM	MARCH 30	10:00 AM - 4:00 PM
MARCH 31	9:00 AM - 4:00 PM	MARCH 31	9:00 AM - 4:00 PM	MARCH 31	9:00 AM - 4:00 PM
<u>GAIL BORDEN LIBRARY</u> 270 N Grove Ave, Elgin, 60120			<u>VAUGHAN ATHLETIC CENTER</u> 2121 W Indian Tr, Aurora, 60506		
MARCH 17 - 21	9:00 AM - 5:00 PM	MARCH 17 - 21	9:00 AM - 5:00 PM	MARCH 17 - 21	9:00 AM - 5:00 PM
MARCH 22	9:00 AM - 12:00 PM	MARCH 22	9:00 AM - 12:00 PM	MARCH 22	9:00 AM - 12:00 PM
MARCH 23	10:00 AM - 4:00 PM	MARCH 23	10:00 AM - 4:00 PM	MARCH 23	10:00 AM - 4:00 PM
MARCH 24 - 28	9:00 AM - 7:00 PM	MARCH 24 - 28	9:00 AM - 7:00 PM	MARCH 24 - 28	9:00 AM - 7:00 PM
MARCH 29	8:00 AM - 4:00 PM	MARCH 29	8:00 AM - 4:00 PM	MARCH 29	8:00 AM - 4:00 PM
MARCH 30	10:00 AM - 4:00 PM	MARCH 30	10:00 AM - 4:00 PM	MARCH 30	10:00 AM - 4:00 PM
MARCH 31	9:00 AM - 4:00 PM	MARCH 31	9:00 AM - 4:00 PM	MARCH 31	9:00 AM - 4:00 PM

**ALTERNATIVE LOCATIONS**  
**UBICACIONES ALTERNATIVAS**

<u>CAMPTON COMMUNITY CENTER</u> 5N082 Old LaFox Rd, Campton Hills, 60175	MARCH 17 - 21	9:00 AM-3:00 PM	<u>HAMPSHIRE TOWNSHIP</u> 170 Mill Ave, Hampshire, 60140	MARCH 17 - 21, 24 & 25	9:00 AM – 4:00 PM
	MARCH 24 - 27	9:00 AM-3:00 PM		MARCH 22	9:00 AM – 12:00 PM
				MARCH 23	10:00 AM – 4:00 PM
<u>CITY OF BATAVIA</u> 100 N Island Ave, Batavia, 60510	MARCH 17 - 21	9:00 AM-3:30 PM	<u>SUGAR GROVE LIBRARY</u> 125 S. Municipal Dr, Sugar Grove, 60554	MARCH 17 - 21	12:00 PM - 5:00 PM
	MARCH 24 - 27	9:00 AM-3:30 PM		MARCH 24 - 27	12:00 PM - 6:00 PM
<u>CITY OF ELGIN</u> 150 Dexter Ct, Elgin, 60120	MARCH 17 - 21	9:00 AM – 1:00 PM	<u>TOWN &amp; COUNTRY LIBRARY</u> 320 E North St, Elburn, 60119	MARCH 24 - 27	12:00 PM - 7:00 PM
<u>DEL WEBB SUN CITY</u> 12880 Del Webb Blvd, Huntley, 60142	MARCH 24 - 27	10:00 AM - 4:30 PM	<u>VILLAGE OF WEST DUNDEE</u> 102 S Second St, West Dun- dee, 60118	MARCH 17 - 21	9:00 AM-4:00 PM
				MARCH 24 - 27	9:00 AM-4:00 PM

**KANE COUNTY VOTE MOBILE LOCATIONS**  
**OPEN 9:00 AM – 4:00 PM**  
**VOTACIÓN MÓVIL DEL CONDADO KANE**  
**ABIERTO DE 9:00 AM – 4:00 PM**

<u>JEWEL-OSCO</u> 119 S Randall Rd, Batavia, 60510	<u>ELGIN COMMUNITY COLLEGE</u> 1700 Spartan Dr, Elgin, 60123	<u>JEWEL-OSCO</u> 800 N Main St, Elburn, 60119	<u>JEWEL-OSCO</u> 1250 W Main St, West Dundee, 60118	<u>JEWEL-OSCO</u> 652 Kirk Rd, St Charles, 60174	<u>JEWEL-OSCO</u> 1660 Larkin Ave, Elgin, 60123
MARCH 17	MARCH 18 – 19	MARCH 20	MARCH 21	MARCH 24 - 25	MARCH 26
<u>JEWEL-OSCO</u> 1952 W Galena Blvd, Aurora, 60506	<u>MIND TRAP ESCAPE ROOMS</u> 299 Montgomery Rd, Montgomery, IL 60538		<u>PRISCO COMMUNITY CENTER</u> 150 W Illinois Ave, Aurora, 60506	<u>NORTH AURORA POLICE DEPARTMENT</u> 200 S Lincolnway St, North Auro- ra, 60542	
MARCH 17 - 20	MARCH 21		MARCH 24	MARCH 25 - 26	

## POLLING PLACES - LOS CENTROS ELECTORALES

The following polling places in Kane County will be open for the CONSOLIDATED ELECTION on Tuesday, April 1, 2025. The polls will open at 6:00 am and remain open until 7:00 pm.  
 Los siguientes lugares de votación en el Condado Kane estarán abiertos para la ELECCIÓN CONSOLIDADA, el Martes, 1 de Abril de 2025. Los centros electorales abrirán a las 6:00 am hasta 7:00 pm.

**JOHN A. CUNNINGHAM, KANE COUNTY CLERK, 719 S BATAVIA AVE, BLDG B, GENEVA, IL 60134**  
**PHONE: 630-232-5990 | FAX: (630) 232-5870 | elections@KaneCountyIL.gov | clerk.kanecountyil.gov/Elections**

### Aurora Township

- 01 Chapelstreet Church (North Aurora), 307 Banbury Rd, North Aurora
- 02 St. Joseph's Church, 722 High St, Aurora
- 03 Stonegate Clubhouse, 1300 Mansfield Dr, Aurora
- 04 Stonegate Clubhouse, 1300 Mansfield Dr, Aurora
- 05 Belle Salle Banquets, 1920 E New York St, Aurora
- 06 Belle Salle Banquets, 1920 E New York St, Aurora
- 07 Mt. Olive Church Of God, 1039 Bonner Ave, Aurora
- 08 Mt. Olive Church Of God, 1039 Bonner Ave, Aurora
- 09 Belle Salle Banquets, 1920 E New York St, Aurora
- 10 Mt. Olive Church Of God, 1039 Bonner Ave, Aurora
- 11 Bethany Of Fox Valley, 2200 Ridge Ave, Aurora
- 12 Bethany Of Fox Valley, 2200 Ridge Ave, Aurora
- 13 Bethany Of Fox Valley, 2200 Ridge Ave, Aurora
- 14 Bethany Of Fox Valley, 2200 Ridge Ave, Aurora
- 15 Our Lady Of Good Counsel Catholic Church, 620 5th St, Aurora
- 16 Our Lady Of Good Counsel Catholic Church, 620 5th St, Aurora
- 17 St. Olaf Lutheran Church, 1233 Douglas Ave, Montgomery
- 18 St. Olaf Lutheran Church, 1233 Douglas Ave, Montgomery
- 19 St. Olaf Lutheran Church, 1233 Douglas Ave, Montgomery
- 20 Montgomery Memorial VFW Post 7452, 121 N River St, Montgomery
- 21 Montgomery Memorial VFW Post 7452, 121 N River St, Montgomery
- 22 Montgomery Memorial VFW Post 7452, 121 N River St, Montgomery
- 23 Our Lady Of Good Counsel Catholic Church, 620 5th St, Aurora
- 24 Our Lady Of Good Counsel Catholic Church, 620 5th St, Aurora
- 25 Warehouse Church, 308 E Galena Blvd, Aurora
- 26 Warehouse Church, 308 E Galena Blvd, Aurora
- 27 Wesley United Methodist Church (Aurora), 14 N May St, Aurora
- 28 Wesley United Methodist Church (Aurora), 14 N May St, Aurora
- 29 St. Mark's Lutheran Church, 27 S Edgelawn Dr, Aurora
- 30 Wesley United Methodist Church (Aurora), 14 N May St, Aurora
- 31 Wesley United Methodist Church (Aurora), 14 N May St, Aurora
- 32 Wesley United Methodist Church (Aurora), 14 N May St, Aurora
- 33 St. Mark's Lutheran Church, 27 S Edgelawn Dr, Aurora
- 34 St. Mark's Lutheran Church, 27 S Edgelawn Dr, Aurora
- 35 St. Mark's Lutheran Church, 27 S Edgelawn Dr, Aurora
- 36 Redeemer Community Church, 905 N Edgelawn Dr, Aurora
- 37 St. Mark's Lutheran Church, 27 S Edgelawn Dr, Aurora
- 38 Redeemer Community Church, 905 N Edgelawn Dr, Aurora
- 39 Redeemer Community Church, 905 N Edgelawn Dr, Aurora
- 40 Vaughan Athletic Center, 2121 W Indian Trail, Aurora
- 41 Jewel Middle School, 1501 Waterford Dr, North Aurora
- 42 Blessed Sacrament Catholic Church, 801 Oak St, North Aurora
- 43 Messenger Public Library Of North Aurora, 113 Oak St, North Aurora
- 44 Messenger Public Library Of North Aurora, 113 Oak St, North Aurora
- 45 Chapelstreet Church (North Aurora), 307 Banbury Rd, North Aurora
- 46 St. Joseph's Church, 722 High St, Aurora
- 47 St. Joseph's Church, 722 High St, Aurora
- 48 Warehouse Church, 308 E Galena Blvd, Aurora
- 49 Warehouse Church, 308 E Galena Blvd, Aurora
- 50 St. Joseph's Church, 722 High St, Aurora
- 51 Prisco Community Center, 150 W Illinois Ave, Aurora
- 52 Prisco Community Center, 150 W Illinois Ave, Aurora
- 53 Gayles Memorial Baptist Church, 730 N. Gillette Ave, Aurora
- 54 Prisco Community Center, 150 W Illinois Ave, Aurora
- 55 Wesley United Methodist Church (Aurora), 14 N May St, Aurora
- 56 I.B.E.W. - Local 461, 591 Sullivan Rd, Ste 100, Aurora
- 57 Gayles Memorial Baptist Church, 730 N. Gillette Ave, Aurora
- 58 I.B.E.W. - Local 461, 591 Sullivan Rd, Ste 100, Aurora
- 59 I.B.E.W. - Local 461, 591 Sullivan Rd, Ste 100, Aurora
- 60 I.B.E.W. - Local 461, 591 Sullivan Rd, Ste 100, Aurora
- 61 Gayles Memorial Baptist Church, 730 N. Gillette Ave, Aurora

### Batavia Township

**BOLD** Denotes Permanent Polling Place Change  
**\*\*** Denotes Temporary Polling Place Change

- 01 Congregational Church Of Batavia, 21 S Batavia Ave, Batavia
- 02 Congregational Church Of Batavia, 21 S Batavia Ave, Batavia
- 03 Congregational Church Of Batavia, 21 S Batavia Ave, Batavia
- 04 Rotolo Middle School, 1501 S Raddant Rd, Batavia
- 05 Chapelstreet Church (North Aurora), 307 Banbury Rd, North Aurora
- 06 Rotolo Middle School, 1501 S Raddant Rd, Batavia
- 07 Lincoln Inn Banquets, 1345 S Batavia Ave, Batavia
- 08 Congregational Church Of Batavia, 21 S Batavia Ave, Batavia
- 09 Lincoln Inn Banquets, 1345 S Batavia Ave, Batavia
- 10 Jewel Middle School, 1501 Waterford Dr, North Aurora
- 11 Lincoln Inn Banquets, 1345 S Batavia Ave, Batavia
- 12 Blessed Sacrament Catholic Church, 801 Oak St, North Aurora
- 13 Chapelstreet Church (North Aurora), 307 Banbury Rd, North Aurora
- 14 Chapelstreet Church (North Aurora), 307 Banbury Rd, North Aurora
- 15 Congregational Church Of Batavia, 21 S Batavia Ave, Batavia
- 16 Lincoln Inn Banquets, 1345 S Batavia Ave, Batavia
- 17 Jewel Middle School, 1501 Waterford Dr, North Aurora
- 18 Chapelstreet Church (North Aurora), 307 Banbury Rd, North Aurora
- 19 Blessed Sacrament Catholic Church, 801 Oak St, North Aurora
- 20 Rotolo Middle School, 1501 S Raddant Rd, Batavia
- 21 Blessed Sacrament Catholic Church, 801 Oak St, North Aurora
- 22 Rotolo Middle School, 1501 S Raddant Rd, Batavia

### Big Rock Township

- 01 Big Rock Park District, 7S405 Madison St, Big Rock
- 02 Big Rock Park District, 7S405 Madison St, Big Rock

### Blackberry Township

- 01 Town and Country Library, 320 E North St, Elburn
- 02 Fox Valley Christian Church, 40W150 Main St, Batavia
- 03 Fox Valley Christian Church, 40W150 Main St, Batavia
- 04 Lord Of Life Lutheran Church, 40W605 Route 38, Elburn
- 05 Fox Valley Christian Church, 40W150 Main St, Batavia
- 06 Fox Valley Christian Church, 40W150 Main St, Batavia
- 07 Fox Valley Christian Church, 40W150 Main St, Batavia
- 08 Fox Valley Christian Church, 40W150 Main St, Batavia
- 09 Fox Valley Christian Church, 40W150 Main St, Batavia
- 10 Fox Valley Christian Church, 40W150 Main St, Batavia
- 11 Fox Valley Christian Church, 40W150 Main St, Batavia

### Burlington Township

- 01 St. John's Lutheran Church, 13N535 French Rd, Burlington

### Campton Township

- 01 Town and Country Library, 320 E North St, Elburn
- 02 Campton Township Community Center, 5N082 Old Lafox Rd, Saint Charles
- 03 Congregational UCC Church, 40W451 Fox Mill Blvd, Saint Charles
- 04 Grace Lutheran Church, 5N600 Hanson Rd, Saint Charles
- 05 Congregational UCC Church, 40W451 Fox Mill Blvd, Saint Charles
- 06 Grace Lutheran Church, 5N600 Hanson Rd, Saint Charles
- 07 Lord Of Life Lutheran Church, 40W605 Route 38, Elburn
- 08 Grace Lutheran Church, 5N600 Hanson Rd, Saint Charles
- 09 Campton Township Community Center, 5N082 Old Lafox Rd, Saint Charles
- 10 Lord Of Life Lutheran Church, 40W605 Route 38, Elburn
- 11 Congregational UCC Church, 40W451 Fox Mill Blvd, Saint Charles
- 12 Congregational UCC Church, 40W451 Fox Mill Blvd, Saint Charles

### Dundee Township

- 01 West Dundee Village Hall, 102 S 2nd St, West Dundee
- 02 Fox Valley Baptist Church, 16N562 Vista Ln, Dundee
- 03 Dundee Township Adult Activity Center, 665 Barington Ave, Carpentersville
- 04 Sleepy Hollow Elementary School, 898 Glen Oak Dr, Sleepy Hollow
- 05 Dundee Township Adult Activity Center, 665 Barington Ave, Carpentersville
- 06 St. Monica's Parish Hall, 90 N Kennedy Dr Rt 25, Carpentersville
- 07 Dundee Township Adult Activity Center, 665 Barington Ave, Carpentersville
- 08 St. Monica's Parish Hall, 90 N Kennedy Dr Rt 25, Carpentersville
- 09 St. Monica's Parish Hall, 90 N Kennedy Dr Rt 25, Carpentersville
- 10 Fox Valley Church, 37W073 Huntley Rd, Dundee

Current as of February 20, 2025 at 3:28 pm

**The above polling places in Kane County will be open for the 2025 Consolidated Election on Tuesday, April 1, 2025.**  
**The polls will be open at 6:00 A.M. and remain open until 7:00 P.M. For additional election information phone (630) 232-5990.**



# POLLING PLACES, CONTINUED - LOS CENTROS ELECTORALES, CONTINUADO

JOHN A. CUNNINGHAM, KANE COUNTY CLERK, 719 S BATAVIA AVE, BLDG B, GENEVA, IL 60134

PHONE: 630-232-5990 | FAX: (630) 232-5870 | elections@KaneCountyIL.gov | clerk.kanecountyil.gov/Elections

## Dundee Township

- 11 Fox Valley Baptist Church, 16N562 Vista Ln, Dundee
- 12 Fox Valley Baptist Church, 16N562 Vista Ln, Dundee
- 13 St. Monica's Parish Hall, 90 N Kennedy Dr Rt 25, Carpentersville
- 14 Fox Valley Church, 37W073 Huntley Rd, Dundee
- 15 Fox Valley Baptist Church, 16N562 Vista Ln, Dundee
- 16 Fox Valley Baptist Church, 16N562 Vista Ln, Dundee
- 17 Algonquin Lakes Elementary School, 1401 Compton Dr, Algonquin
- 18 Carpentersville Fire Station #93, 5000 Sleepy Hollow Rd, Carpentersville
- 19 St. Monica's Parish Hall, 90 N Kennedy Dr Rt 25, Carpentersville
- 20 Sleepy Hollow Elementary School, 898 Glen Oak Dr, Sleepy Hollow
- 21 St. Monica's Parish Hall, 90 N Kennedy Dr Rt 25, Carpentersville
- 22 Sleepy Hollow Elementary School, 898 Glen Oak Dr, Sleepy Hollow
- 23 Sleepy Hollow Elementary School, 898 Glen Oak Dr, Sleepy Hollow
- 24 Algonquin Lakes Elementary School, 1401 Compton Dr, Algonquin
- 25 Westfield Community School, 2100 Sleepy Hollow Rd, Algonquin
- 26 Sleepy Hollow Elementary School, 898 Glen Oak Dr, Sleepy Hollow
- 27 West Dundee Village Hall, 102 S 2nd St, West Dundee
- 28 Sleepy Hollow Elementary School, 898 Glen Oak Dr, Sleepy Hollow
- 29 Westfield Community School, 2100 Sleepy Hollow Rd, Algonquin
- 30 Westfield Community School, 2100 Sleepy Hollow Rd, Algonquin
- 31 West Dundee Village Hall, 102 S 2nd St, West Dundee
- 32 Carpentersville Fire Station #93, 5000 Sleepy Hollow Rd, Carpentersville
- 33 Fox Valley Church, 37W073 Huntley Rd, Dundee
- 34 Westfield Community School, 2100 Sleepy Hollow Rd, Algonquin
- 35 Algonquin Lakes Elementary School, 1401 Compton Dr, Algonquin

## Elgin Township

- 01 Gail Borden Public Library, 270 N Grove Ave, Elgin
- 02 American Legion Post No. 57, 820 N Liberty St, Elgin
- 03 Elgin Community College (Bldg. H), 1700 Spartan Dr, Elgin
- 04 Elgin Community College (Bldg. H), 1700 Spartan Dr, Elgin
- 05 American Legion Post No. 57, 820 N Liberty St, Elgin
- 06 New Life Covenant Church, 2250 W Highland Ave, Elgin
- 07 New Life Covenant Church, 2250 W Highland Ave, Elgin
- 08 Greater Grace Community Church, 991 Deborah Ave, Elgin
- 09 Gail Borden Public Library, 270 N Grove Ave, Elgin
- 10 New Life Covenant Church, 2250 W Highland Ave, Elgin
- 11 Gail Borden Public Library, 270 N Grove Ave, Elgin
- 12 Evangelical Free Church, 1900 Big Timber Rd, Elgin
- 13 Gail Borden Public Library, 270 N Grove Ave, Elgin
- 14 Elgin Community College (Bldg. H), 1700 Spartan Dr, Elgin
- 15 Evangelical Free Church, 1900 Big Timber Rd, Elgin
- 16 Highland Avenue Church Of The Brethren, 783 W Highland Ave, Elgin
- 17 Gail Borden Public Library, 270 N Grove Ave, Elgin
- 18 Elgin Community College (Bldg. H), 1700 Spartan Dr, Elgin
- 19 American Legion Post No. 57, 820 N Liberty St, Elgin
- 20 Elgin Township, 729 S Mc Lean Blvd, Elgin
- 21 Village Of South Elgin Public Services, 1000 Bowes Rd, South Elgin
- 22 Northwest Bible Baptist Church, 9N889 Nesler Rd, Elgin
- 23 Greater Grace Community Church, 991 Deborah Ave, Elgin
- 24 Northwest Bible Baptist Church, 9N889 Nesler Rd, Elgin
- 25 Highland Avenue Church Of The Brethren, 783 W Highland Ave, Elgin
- 26 First Presbyterian Church Of Elgin, 240 Standish St, Elgin
- 27 Highland Avenue Church Of The Brethren, 783 W Highland Ave, Elgin
- 28 Northwest Bible Baptist Church, 9N889 Nesler Rd, Elgin
- 29 Highland Avenue Church Of The Brethren, 783 W Highland Ave, Elgin
- 30 Northwest Bible Baptist Church, 9N889 Nesler Rd, Elgin
- 31 First Presbyterian Church Of Elgin, 240 Standish St, Elgin
- 32 American Legion Post No. 57, 820 N Liberty St, Elgin
- 33 Elgin Township, 729 S Mc Lean Blvd, Elgin
- 34 First Presbyterian Church Of Elgin, 240 Standish St, Elgin
- 35 Highland Avenue Church Of The Brethren, 783 W Highland Ave, Elgin
- 36 Village Of South Elgin Public Services, 1000 Bowes Rd, South Elgin

- 37 Greater Grace Community Church, 991 Deborah Ave, Elgin
- 38 Village Of South Elgin Public Services, 1000 Bowes Rd, South Elgin
- 39 Village Of South Elgin Public Services, 1000 Bowes Rd, South Elgin
- 40 Northwest Bible Baptist Church, 9N889 Nesler Rd, Elgin
- 41 Elgin Community College (Bldg. H), 1700 Spartan Dr, Elgin
- 42 Elgin Community College (Bldg. H), 1700 Spartan Dr, Elgin
- 43 New Life Covenant Church, 2250 W Highland Ave, Elgin
- 44 First Presbyterian Church Of Elgin, 240 Standish St, Elgin
- 45 Elgin Township, 729 S Mc Lean Blvd, Elgin
- 46 Northwest Bible Baptist Church, 9N889 Nesler Rd, Elgin
- 47 Northwest Bible Baptist Church, 9N889 Nesler Rd, Elgin
- 48 Evangelical Free Church, 1900 Big Timber Rd, Elgin
- 49 Village Of South Elgin Public Services, 1000 Bowes Rd, South Elgin
- 50 Northwest Bible Baptist Church, 9N889 Nesler Rd, Elgin
- 51 Elgin Community College (Bldg. H), 1700 Spartan Dr, Elgin
- 52 Evangelical Free Church, 1900 Big Timber Rd, Elgin

## Geneva Township

- 01 Faith Lutheran Church, 1745 Kaneville Road, Geneva
- 02 Faith Lutheran Church, 1745 Kaneville Road, Geneva
- 03 Faith Lutheran Church, 1745 Kaneville Road, Geneva
- 04 Chapelstreet Church (Keslinger Campus), 3435 Keslinger Rd, Geneva
- 05 Pepper Valley Clubhouse, 2105 Pepper Valley Dr, Geneva
- 06 Pepper Valley Clubhouse, 2105 Pepper Valley Dr, Geneva
- 07 Pepper Valley Clubhouse, 2105 Pepper Valley Dr, Geneva
- 08 Faith Lutheran Church, 1745 Kaneville Road, Geneva
- 09 Fox Valley Presbyterian Church, 227 East Side Dr, Geneva
- 10 Fox Valley Presbyterian Church, 227 East Side Dr, Geneva
- 11 Fox Valley Presbyterian Church, 227 East Side Dr, Geneva
- 12 Congregational Church Of Batavia, 21 S Batavia Ave, Batavia
- 13 Faith Lutheran Church, 1745 Kaneville Road, Geneva
- 14 River City Church, 3450 Swenson Ave, Saint Charles
- 15 Sunset Community Center, 710 Western Ave, Geneva
- 16 Chapelstreet Church (Keslinger Campus), 3435 Keslinger Rd, Geneva
- 17 Fox Valley Presbyterian Church, 227 East Side Dr, Geneva
- 18 Sunset Community Center, 710 Western Ave, Geneva
- 19 Chapelstreet Church (Keslinger Campus), 3435 Keslinger Rd, Geneva
- 20 Chapelstreet Church (Keslinger Campus), 3435 Keslinger Rd, Geneva

## Hampshire Township

- 01 First United Methodist Church, 207 Grove Ave, Hampshire
- 02 First United Methodist Church, 207 Grove Ave, Hampshire
- 03 First United Methodist Church, 207 Grove Ave, Hampshire
- 04 First United Methodist Church, 207 Grove Ave, Hampshire
- 05 First United Methodist Church, 207 Grove Ave, Hampshire

## Kaneville Township

- 01 Dave Werdin Community Center, 2S101 Harter Rd, Kaneville

## Plato Township

- 01 Cornerstone United Methodist Church, 41W170 Russell Rd, Elgin
- 02 Cornerstone United Methodist Church, 41W170 Russell Rd, Elgin
- 03 Cornerstone United Methodist Church, 41W170 Russell Rd, Elgin
- 04 Cornerstone United Methodist Church, 41W170 Russell Rd, Elgin
- 05 Cornerstone United Methodist Church, 41W170 Russell Rd, Elgin
- 06 Cornerstone United Methodist Church, 41W170 Russell Rd, Elgin

## Rutland Township

- 01 Fraternal Order Of Eagles #1047, 325 Raymond St, Gilberts
- 02 Prairie Lodge, Del Webb Sun City, 12880 Del Webb Blvd, Huntley
- 03 Prairie Lodge, Del Webb Sun City, 12880 Del Webb Blvd, Huntley
- 04 Fraternal Order Of Eagles #1047, 325 Raymond St, Gilberts
- 05 Cambridge Lakes Community Center, 1125 Wester Blvd, Pingree Grove
- 06 Prairie Lodge, Del Webb Sun City, 12880 Del Webb Blvd, Huntley
- 07 Cambridge Lakes Community Center, 1125 Wester Blvd, Pingree Grove
- 08 Cambridge Lakes Community Center, 1125 Wester Blvd, Pingree Grove
- 09 Cambridge Lakes Community Center, 1125 Wester Blvd, Pingree Grove
- 10 Cambridge Lakes Community Center, 1125 Wester Blvd, Pingree Grove

**BOLD** Denotes Permanent Polling Place Change

**\*\*** Denotes Temporary Polling Place Change

Current as of February 20, 2025 at 3:28 pm

The above polling places in Kane County will be open for the 2025 Consolidated Election on Tuesday, April 1, 2025.

The polls will be open at 6:00 A.M. and remain open until 7:00 P.M. For additional election information phone (630) 232-5990.

**POLLING PLACES - LOS CENTROS ELECTORALES**

**JOHN A. CUNNINGHAM, KANE COUNTY CLERK, 719 S BATAVIA AVE, BLDG B, GENEVA, IL 60134**  
**PHONE: 630-232-5990 | FAX: (630) 232-5870 | elections@KaneCountyIL.gov | clerk.kanecountyil.gov/Elections**

**Rutland Township**

- 11 Fraternal Order Of Eagles #1047, 325 Raymond St, Gilberts
- 12 Prairie Lodge, Del Webb Sun City, 12880 Del Webb Blvd, Huntley
- 13 Prairie Lodge, Del Webb Sun City, 12880 Del Webb Blvd, Huntley
- 14 Fraternal Order Of Eagles #1047, 325 Raymond St, Gilberts

**St. Charles Township**

- 01 River City Church, 3450 Swenson Ave, Saint Charles
- 02 Hosanna Lutheran Church, 36W925 Red Gate Rd, Saint Charles
- 03 River City Church, 3450 Swenson Ave, Saint Charles
- 04 Bethlehem Lutheran Church, 1145 N 5th Ave, Saint Charles
- 05 Baker Community Center, 101 S 2nd St, Saint Charles
- 06 Bethlehem Lutheran Church, 1145 N 5th Ave, Saint Charles
- 07 Valley View Baptist Church, 6N656 Route 25, Saint Charles
- 08 New Covenant Bible Church, 4N780 Randall Rd, Saint Charles
- 09 Baker Community Center, 101 S 2nd St, Saint Charles
- 10 Baker Community Center, 101 S 2nd St, Saint Charles
- 11 Valley View Baptist Church, 6N656 Route 25, Saint Charles
- 12 Thornwood Sports Core, 850 Thornwood Dr, South Elgin
- 13 River City Church, 3450 Swenson Ave, Saint Charles
- 14 Kane County Branch Court, 530 S Randall Rd, Saint Charles
- 15 Kane County Branch Court, 530 S Randall Rd, Saint Charles
- 16 River City Church, 3450 Swenson Ave, Saint Charles
- 17 Valley View Baptist Church, 6N656 Route 25, Saint Charles
- 18 Kane County Branch Court, 530 S Randall Rd, Saint Charles
- 19 Bethlehem Lutheran Church, 1145 N 5th Ave, Saint Charles
- 20 Bethlehem Lutheran Church, 1145 N 5th Ave, Saint Charles
- 21 New Covenant Bible Church, 4N780 Randall Rd, Saint Charles
- 22 Bethlehem Lutheran Church, 1145 N 5th Ave, Saint Charles
- 23 New Covenant Bible Church, 4N780 Randall Rd, Saint Charles
- 24 Thornwood Sports Core, 850 Thornwood Dr, South Elgin
- 25 Hosanna Lutheran Church, 36W925 Red Gate Rd, Saint Charles
- 26 Hosanna Lutheran Church, 36W925 Red Gate Rd, Saint Charles
- 27 Bethlehem Lutheran Church, 1145 N 5th Ave, Saint Charles
- 28 Bethlehem Lutheran Church, 1145 N 5th Ave, Saint Charles
- 29 Thornwood Sports Core, 850 Thornwood Dr, South Elgin
- 30 New Covenant Bible Church, 4N780 Randall Rd, Saint Charles
- 31 Hosanna Lutheran Church, 36W925 Red Gate Rd, Saint Charles
- 32 River City Church, 3450 Swenson Ave, Saint Charles
- 33 Thornwood Sports Core, 850 Thornwood Dr, South Elgin
- 34 Thornwood Sports Core, 850 Thornwood Dr, South Elgin

**Sugar Grove Township**

- 01 Sugar Grove Township Community Bldg., 141 Main St, Sugar Grove
- 02 Sugar Grove Township Community Bldg., 141 Main St, Sugar Grove
- 03 Village Bible Church, 847 Route 47, Sugar Grove
- 04 Village Bible Church, 847 Route 47, Sugar Grove
- 05 Sugar Grove Township Community Bldg., 141 Main St, Sugar Grove
- 06 Vaughan Athletic Center, 2121 W Indian Trail, Aurora
- 07 Vaughan Athletic Center, 2121 W Indian Trail, Aurora
- 08 Vaughan Athletic Center, 2121 W Indian Trail, Aurora
- 09 St. Mark's Lutheran Church, 27 S Edgelawn Dr, Aurora
- 10 Sugar Grove Township Community Bldg., 141 Main St, Sugar Grove
- 11 Sugar Grove Township Community Bldg., 141 Main St, Sugar Grove
- 12 Village Bible Church, 847 Route 47, Sugar Grove
- 13 Village Bible Church, 847 Route 47, Sugar Grove
- 14 Sugar Grove Township Community Bldg., 141 Main St, Sugar Grove

**Virgil Township**

- 01 Maple Park Civic Center, 302 Willow St, Maple Park
- 02 Sts Peter And Paul Church, 5N939 Meredith Rd, Maple Park

**BOLD** Denotes Permanent Polling Place Change

\*\* Denotes Temporary Polling Place Change

Current as of February 20, 2025 at 3:28 pm

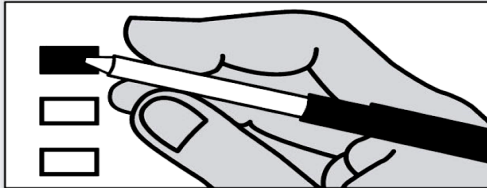
**The above polling places in Kane County will be open for the 2025 Consolidated Election on Tuesday, April 1, 2025.  
 The polls will be open at 6:00 A.M. and remain open until 7:00 P.M. For additional election information phone (630) 232-5990.**

# OFFICIAL BALLOT / Boleta Oficial

**John A. Cunningham**  
**Kane County Clerk**  
 John A. Cunningham  
 Secretario del Condado Kane



Please use a black or blue ink pen to mark your ballot. To vote for your choice in each contest, completely fill in the box next to your choice. To vote for a write-in, fill in the box provided to the left of the words "Write-in" and write the name of the candidate on the blank line next to the box. Por favor utilice un bolígrafo de tinta negra o azul para marcar su boleta. Para votar por su selección en cada concurso, llene completamente el cuadro al lado de su selección. Para votar por un Candidato Escrito, llene el cuadro provisto a la izquierda de las palabras "Escrito" y escriba el nombre del candidato en la línea en blanco al lado del cuadro.



**CITY**  
 CIUDAD

**CITY OF BATAVIA**  
**FOR MAYOR**  
 CIUDAD DE BATAVIA  
 PARA ALCALDE

Vote for (ONE)  
 Votar por (UNO)

Thomas M. Connelly IND  
 Jeffery D. Schielke IND

**CITY OF BATAVIA**  
**FOR CLERK**  
 CIUDAD DE BATAVIA  
 PARA SECRETARIO

Vote for (ONE)  
 Votar por (UNO)

Kate Garrett IND

**CITY OF BATAVIA**  
**FOR ALDERPERSON, WARD 1**  
 CIUDAD DE BATAVIA  
 PARA CONCEJAL DISTRITO 1

Vote for (ONE)  
 Votar por (UNO)

Jennifer Baerren IND

**CITY OF BATAVIA**  
**FOR ALDERPERSON, WARD 2**  
 CIUDAD DE BATAVIA  
 PARA CONCEJAL DISTRITO 2

Vote for (ONE)  
 Votar por (UNO)

Leah Leman IND

**CITY OF BATAVIA**  
**FOR ALDERPERSON, WARD 3**  
 CIUDAD DE BATAVIA  
 PARA CONCEJAL DISTRITO 3

Vote for (ONE)  
 Votar por (UNO)

Alice Lohman IND

**CITY OF BATAVIA**  
**FOR ALDERPERSON, WARD 3 TO SERVE AN UNEXPIRED 2-YEAR TERM**  
 CIUDAD DE BATAVIA  
 PARA CONCEJAL DISTRITO 3 TERMINO INCONCLUSO DE 2 AÑOS

Vote for (ONE)  
 Votar por (UNO)

Kevin Malone IND

**CITY OF BATAVIA**  
**FOR ALDERPERSON, WARD 4**  
 CIUDAD DE BATAVIA  
 PARA CONCEJAL DISTRITO 4

Vote for (ONE)  
 Votar por (UNO)

Douglas A. Eldrenkamp IND  
 Dustin Pieper IND

**CITY OF BATAVIA**  
**FOR ALDERPERSON, WARD 4 TO SERVE AN UNEXPIRED 2-YEAR TERM**  
 CIUDAD DE BATAVIA  
 PARA CONCEJAL DISTRITO 4 TERMINO INCONCLUSO DE 2 AÑOS

Vote for (ONE)  
 Votar por (UNO)

Tony Malay IND

**CITY OF BATAVIA**  
**FOR ALDERPERSON, WARD 5**  
 CIUDAD DE BATAVIA  
 PARA CONCEJAL DISTRITO 5

Vote for (ONE)  
 Votar por (UNO)

James Fahrenbach IND  
 Garran DeWain Sparks IND

**CITY OF BATAVIA**  
**FOR ALDERPERSON, WARD 6**  
 CIUDAD DE BATAVIA  
 PARA CONCEJAL DISTRITO 6

Vote for (ONE)  
 Votar por (UNO)

Matthew Anderson IND  
 Kate Cuneo IND

**CITY OF BATAVIA**  
**FOR ALDERPERSON, WARD 7**  
 CIUDAD DE BATAVIA  
 PARA CONCEJAL DISTRITO 7

Vote for (ONE)  
 Votar por (UNO)

Sarah Vogelsinger IND

**CITY OF BATAVIA**  
**FOR ALDERPERSON, WARD 7 TO SERVE AN UNEXPIRED 2-YEAR TERM**  
 CIUDAD DE BATAVIA  
 PARA CONCEJAL DISTRITO 7 TERMINO INCONCLUSO DE 2 AÑOS

Vote for (ONE)  
 Votar por (UNO)

Robin Barraza IND

**CITY OF ELGIN**  
**FOR CITY COUNCILPERSON**  
 CIUDAD DE ELGIN  
 PARA CONCEJAL DE CIUDAD

Vote for (FOUR)  
 Votar por (CUATRO)

Maggie Beyer  
 Steven Thoren  
 Cecilia Ivana Brooks  
 Diana Alfaro  
 Dustin Good  
 Erik Bosque Pena  
 Mark W. Smith  
 Corey D. Dixon

Write-in Escribir en

**CITY OF GENEVA**  
**FOR MAYOR**  
 CIUDAD DE GENEVA  
 PARA ALCALDE

Vote for (ONE)  
 Votar por (UNO)

Kevin Burns IND  
 Karsten Pawlik IND

**CITY OF GENEVA**  
**FOR CLERK**  
 CIUDAD DE GENEVA  
 PARA SECRETARIO

Vote for (ONE)  
 Votar por (UNO)

Vicki Kellick IND



I HEREBY CERTIFY THAT THIS SPECIMEN BALLOT IS A TRUE AND CORRECT COPY OF THE OFFICES, CANDIDATES AND/OR PROPOSITIONS TO BE VOTED IN THE CONSOLIDATED ELECTION TO BE HELD IN KANE COUNTY ON TUESDAY, APRIL 1, 2025. CERTIFICO POR LA PRESENTE QUE ESTA BOLETA DE MUESTRA ES COPIA FIEL Y CORRECTA DE LOS PUESTOS, CANDIDATOS Y/O PROPOSICIONES QUE SERÁN SOMETIDAS A LA VOTACIÓN DURANTE LA ELECCIÓN CONSOLIDADA SERÁ CELEBRADA EN EL CONDADO KANE EL MARTES, 1 DE ABRIL DE 2025.



**JOHN A. CUNNINGHAM**  
 Kane County Clerk  
 Secretario del Condado de Kane

# OFFICIAL BALLOT / Boleta Oficial

**CITY OF GENEVA  
FOR TREASURER**  
CIUDAD DE GENEVA  
PARA TESORERO

Vote for (ONE)  
Votar por (UNO)

No Candidate *No Hay Candidato*

**CITY OF GENEVA  
FOR ALDERPERSON, WARD 1**  
CIUDAD DE GENEVA  
PARA CONCEJAL DISTRITO 1

Vote for (ONE)  
Votar por (UNO)

William Malecki IND

**CITY OF GENEVA  
FOR ALDERPERSON, WARD 2**  
CIUDAD DE GENEVA  
PARA CONCEJAL DISTRITO 2

Vote for (ONE)  
Votar por (UNO)

Richard Marks IND

**CITY OF GENEVA  
FOR ALDERPERSON, WARD 3**  
CIUDAD DE GENEVA  
PARA CONCEJAL DISTRITO 3

Vote for (ONE)  
Votar por (UNO)

Lee W. Eysturid IND

Larry Furnish IND

Kevin J. Ziegler IND

**CITY OF GENEVA  
FOR ALDERPERSON, WARD 4**  
CIUDAD DE GENEVA  
PARA CONCEJAL DISTRITO 4

Vote for (ONE)  
Votar por (UNO)

Amy Mayer IND

Erin M. Di Silvestro IND

**CITY OF GENEVA  
FOR ALDERPERSON, WARD 5**  
CIUDAD DE GENEVA  
PARA CONCEJAL DISTRITO 5

Vote for (ONE)  
Votar por (UNO)

Patrice Bertheau IND

Jeff Palmquist IND

Kim Edwards IND

**CITY OF GENEVA  
FOR ALDERPERSON, WARD 5 TO SERVE A 2-  
YEAR TERM**  
CIUDAD DE GENEVA  
PARA CONCEJAL DISTRITO 5 TERMINO  
INCONCLUSO DE 2 ANOS

Vote for (ONE)  
Votar por (UNO)

Mark Reinecke IND

**CITY OF ST CHARLES  
FOR MAYOR**  
CIUDAD DE ST CHARLES  
PARA ALCALDE

Vote for (ONE)  
Votar por (UNO)

Clint Hull IND

Lora A. Vitek IND

**CITY OF ST CHARLES  
FOR CLERK**  
CIUDAD DE ST CHARLES  
PARA SECRETARIO

Vote for (ONE)  
Votar por (UNO)

Susan Hanson IND

**CITY OF ST CHARLES  
FOR TREASURER**  
CIUDAD DE ST CHARLES  
PARA TESORERO

Vote for (ONE)  
Votar por (UNO)

John R. Harrill IND

**CITY OF ST CHARLES  
FOR ALDERPERSON, WARD 1**  
CIUDAD DE ST CHARLES  
PARA CONCEJAL DISTRITO 1

Vote for (ONE)  
Votar por (UNO)

Ronald Silkaitis IND

Robert Kasper IND

**CITY OF ST CHARLES  
FOR ALDERPERSON, WARD 2**  
CIUDAD DE ST CHARLES  
PARA CONCEJAL DISTRITO 2

Vote for (ONE)  
Votar por (UNO)

Ryan S. Bongard IND

Angela Churchill IND

**CITY OF ST CHARLES  
FOR ALDERPERSON, WARD 3**  
CIUDAD DE ST CHARLES  
PARA CONCEJAL DISTRITO 3

Vote for (ONE)  
Votar por (UNO)

Vicki Spellman IND

Paul D. Lencioni IND

Carolyn Waibel IND

**CITY OF ST CHARLES  
FOR ALDERPERSON, WARD 3 UNEXPIRED 2-  
YEAR TERM**  
CIUDAD DE ST CHARLES  
PARA CONCEJAL DISTRITO 3 TERMINO  
INCONCLUSO DE 2 ANOS

Vote for (ONE)  
Votar por (UNO)

Robert W. "Bob" Gehm IND

**CITY OF ST CHARLES  
FOR ALDERPERSON, WARD 4**  
CIUDAD DE ST CHARLES  
PARA CONCEJAL DISTRITO 4

Vote for (ONE)  
Votar por (UNO)

Bryan Wirball IND

**CITY OF ST CHARLES  
FOR ALDERPERSON, WARD 5**  
CIUDAD DE ST CHARLES  
PARA CONCEJAL DISTRITO 5

Vote for (ONE)  
Votar por (UNO)

Steve Weber IND

Lauren Duddles IND

**CITY OF AURORA  
FOR MAYOR**  
CIUDAD DE AURORA  
PARA ALCALDE

Vote for (ONE)  
Votar por (UNO)

Richard C. Irvin

John Laesch

**CITY OF AURORA  
FOR ALDERPERSON AT LARGE**  
CIUDAD DE AURORA  
PARA CONCEJAL EN GENERAL

Vote for (ONE)  
Votar por (UNO)

Ron Woerman

Keith Larson



I HEREBY CERTIFY THAT THIS SPECIMEN BALLOT IS A TRUE AND CORRECT COPY OF THE OFFICES, CANDIDATES AND/OR PROPOSITIONS TO BE VOTED IN THE CONSOLIDATED ELECTION TO BE HELD IN KANE COUNTY ON TUESDAY, APRIL 1, 2025. CERTIFICO POR LA PRESENTE QUE ESTA BOLETA DE MUESTRA ES COPIA FIEL Y CORRECTA DE LOS PUESTOS, CANDIDATOS Y/O PROPOSICIONES QUE SERÁN SOMETIDAS A LA VOTACIÓN DURANTE LA ELECCIÓN CONSOLIDADA SERÁ CELEBRADA EN EL CONDADO KANE EL MARTES, 1 DE ABRIL DE 2025.

**JOHN A. CUNNINGHAM**  
Kane County Clerk  
Secretario del Condado de Kane



# OFFICIAL BALLOT / Boleta Oficial

**CITY OF AURORA  
FOR ALDERPERSON, WARD 1 TO SERVE AN  
UNEXPIRED 2-YEAR TERM**  
CIUDAD DE AURORA  
PARA CONCEJAL DISTRITO 1 TERMINO  
INCONCLUSO DE 2 ANOS

Vote for (ONE)  
Votar por (UNO)

Hugo Saltijeral

Daniel Barreiro

Jeffrey D Donelson

Ray Hull

**CITY OF AURORA  
FOR ALDERPERSON, WARD 2**  
CIUDAD DE AURORA  
PARA CONCEJAL DISTRITO 2

Vote for (ONE)  
Votar por (UNO)

Juany Garza

Alfonso Santoyo

**CITY OF AURORA  
FOR ALDERPERSON, WARD 4**  
CIUDAD DE AURORA  
PARA CONCEJAL DISTRITO 4

Vote for (ONE)  
Votar por (UNO)

Jonathan Nunez

Jeffrey S. Hansford

**CITY OF AURORA  
FOR ALDERPERSON, WARD 7**  
CIUDAD DE AURORA  
PARA CONCEJAL DISTRITO 7

Vote for (ONE)  
Votar por (UNO)

Javier Banuelos

Brandon C Tolliver

-----  
Write-in Escribir en

**VILLAGE  
ALDEA**

**VILLAGE OF ALGONQUIN  
FOR PRESIDENT TO SERVE A 4-YEAR TERM**  
ALDEA DE ALGONQUIN  
PARA PRESIDENTE UN TERMINO DE 4 ANOS

Vote for (ONE)  
Votar por (UNO)

Debby Sosine IND

**VILLAGE OF ALGONQUIN  
FOR CLERK TO SERVE A 4-YEAR TERM**  
ALDEA DE ALGONQUIN  
PARA SECRETARIO SERVIR UN TERMINO DE 4  
ANOS

Vote for (ONE)  
Votar por (UNO)

Fred Martin IND

**VILLAGE OF ALGONQUIN  
FOR TRUSTEE TO SERVE A 4-YEAR TERM**  
ALDEA DE ALGONQUIN  
PARA FIDUCIARIO SERVIR UN TERMINO DE 4  
ANOS

Vote for (THREE)  
Votar por (TRES)

Robert M. (Bob) Smith IND

Jerry Glogowski IND

Laura Brehmer IND

**VILLAGE OF BARRINGTON HILLS  
FOR PRESIDENT TO SERVE A 4-YEAR TERM**  
ALDEA DE BARRINGTON HILLS  
PARA PRESIDENTE UN TERMINO DE 4 ANOS

Vote for (ONE)  
Votar por (UNO)

Brian D. Cecola IND

**VILLAGE OF BARRINGTON HILLS  
FOR TRUSTEE TO SERVE A 4-YEAR TERM**  
ALDEA DE BARRINGTON HILLS  
PARA FIDUCIARIO SERVIR UN TERMINO DE 4  
ANOS

Vote for (THREE)  
Votar por (TRES)

David Riff IND

Thomas W. Strauss IND

Laura S. Ekstrom IND

**VILLAGE OF BARTLETT  
FOR PRESIDENT TO SERVE A 4-YEAR TERM**  
ALDEA DE BARTLETT  
PARA PRESIDENTE UN TERMINO DE 4 ANOS

Vote for (ONE)  
Votar por (UNO)

Daniel H. Gunsteen IND

**VILLAGE OF BARTLETT  
FOR CLERK TO SERVE A 4-YEAR TERM**  
ALDEA DE BARTLETT  
PARA SECRETARIO SERVIR UN TERMINO DE 4  
ANOS

Vote for (ONE)  
Votar por (UNO)

Lorna G. Giles IND

**VILLAGE OF BARTLETT  
FOR TRUSTEE TO SERVE A 4-YEAR TERM**  
ALDEA DE BARTLETT  
PARA FIDUCIARIO SERVIR UN TERMINO DE 4  
ANOS

Vote for (THREE)  
Votar por (TRES)

John M. Battermann IND

Stephanie Z. Gandsey IND

Joseph W. LaPorte IND

**VILLAGE OF BIG ROCK  
FOR TRUSTEE TO SERVE A 4-YEAR TERM**  
ALDEA DE BIG ROCK  
PARA FIDUCIARIO SERVIR UN TERMINO DE 4  
ANOS

Vote for (THREE)  
Votar por (TRES)

Cory Schollmeyer

Haley A. Mason

Ted A. McCannon

**VILLAGE OF BURLINGTON  
FOR PRESIDENT TO SERVE A 4-YEAR TERM**  
ALDEA DE BURLINGTON  
PARA PRESIDENTE UN TERMINO DE 4 ANOS

Vote for (ONE)  
Votar por (UNO)

Mary Kay Wlezen IND

**VILLAGE OF BURLINGTON  
FOR TRUSTEE TO SERVE A 4-YEAR TERM**  
ALDEA DE BURLINGTON  
PARA FIDUCIARIO SERVIR UN TERMINO DE 4  
ANOS

Vote for (THREE)  
Votar por (TRES)

No Candidate/No Hay Candidato

-----  
Write-in Escribir en

**VILLAGE OF CAMPTON HILLS  
FOR TRUSTEE TO SERVE A 4-YEAR TERM**  
ALDEA DE CAMPTON HILLS  
PARA FIDUCIARIO SERVIR UN TERMINO DE 4  
ANOS

Vote for (THREE)  
Votar por (TRES)

Michael D. Millette

Terese Hopfensperger

Kimberly A Muhr



I HEREBY CERTIFY THAT THIS SPECIMEN BALLOT IS A TRUE AND CORRECT COPY OF THE OFFICES, CANDIDATES AND/OR PROPOSITIONS TO BE VOTED IN THE CONSOLIDATED ELECTION TO BE HELD IN KANE COUNTY ON TUESDAY, APRIL 1, 2025. CERTIFICO POR LA PRESENTE QUE ESTA BOLETA DE MUESTRA ES COPIA FIEL Y CORRECTA DE LOS PUESTOS, CANDIDATOS Y/O PROPOSICIONES QUE SERÁN SOMETIDAS A LA VOTACIÓN DURANTE LA ELECCIÓN CONSOLIDADA SERÁ CELEBRADA EN EL CONDADO KANE EL MARTES, 1 DE ABRIL DE 2025.

*John A. Cunningham*

**JOHN A. CUNNINGHAM**  
Kane County Clerk  
Secretario del Condado de Kane

# OFFICIAL BALLOT / Boleta Oficial

**VILLAGE OF CAMPTON HILLS  
FOR TRUSTEE TO SERVE AN UNEXPIRED 2-  
YEAR TERM**  
ALDEA DE CAMPTON HILLS  
PARA FIDUCIARIO SERVIR UN TERMINO  
INCONCLUSO DE 2 ANOS

Vote for (ONE)  
Votar por (UNO)

- Ed Muncie
- Frank Binetti

**VILLAGE OF CARPENTERSVILLE  
FOR PRESIDENT TO SERVE A 4-YEAR TERM**  
ALDEA DE CARPENTERSVILLE  
PARA PRESIDENTE UN TERMINO DE 4 ANOS

Vote for (ONE)  
Votar por (UNO)

- John M. Skillman IND
- Brenda Sandoval IND

**VILLAGE OF CARPENTERSVILLE  
FOR TRUSTEE TO SERVE A 4-YEAR TERM**  
ALDEA DE CARPENTERSVILLE  
PARA FIDUCIARIO SERVIR UN TERMINO DE 4  
ANOS

Vote for (THREE)  
Votar por (TRES)

- Sameer Gupta IND
- Jim Malone IND
- Dennis C. Ernest IND
- Billy Dean Saylor IND
- Josephine Maniscalco IND

**VILLAGE OF EAST DUNDEE  
FOR PRESIDENT TO SERVE A 4-YEAR TERM**  
ALDEA DE EAST DUNDEE  
PARA PRESIDENTE UN TERMINO DE 4 ANOS

Vote for (ONE)  
Votar por (UNO)

- Sarah Brittin IND
- Daniel J. Pearson IND

**VILLAGE OF EAST DUNDEE  
FOR TRUSTEE TO SERVE A 4-YEAR TERM**  
ALDEA DE EAST DUNDEE  
PARA FIDUCIARIO SERVIR UN TERMINO DE 4  
ANOS

Vote for (THREE)  
Votar por (TRES)

- Mathew Oclon IND
- Andrew Sauder IND
- Tricia Saviano IND

**VILLAGE OF ELBURN  
FOR PRESIDENT TO SERVE A 4-YEAR TERM**  
ALDEA DE ELBURN  
PARA PRESIDENTE UN TERMINO DE 4 ANOS

Vote for (ONE)  
Votar por (UNO)

- Jeffrey D. Walter

**VILLAGE OF ELBURN  
FOR TRUSTEE TO SERVE A 4-YEAR TERM**  
ALDEA DE ELBURN  
PARA FIDUCIARIO SERVIR UN TERMINO DE 4  
ANOS

Vote for (THREE)  
Votar por (TRES)

- Matt Wilson
- John Bolger

**VILLAGE OF ELBURN  
FOR TRUSTEE TO SERVE AN UNEXPIRED 2-  
YEAR TERM**  
ALDEA DE ELBURN  
PARA FIDUCIARIO SERVIR UN TERMINO  
INCONCLUSO DE 2 ANOS

Vote for (ONE)  
Votar por (UNO)

- Megan Mussano

**VILLAGE OF GILBERTS  
FOR PRESIDENT TO SERVE A 4-YEAR TERM**  
ALDEA DE GILBERTS  
PARA PRESIDENTE UN TERMINO DE 4 ANOS

Vote for (ONE)  
Votar por (UNO)

- Guy Zambetti IND

**VILLAGE OF GILBERTS  
FOR TRUSTEE TO SERVE A 4-YEAR TERM**  
ALDEA DE GILBERTS  
PARA FIDUCIARIO SERVIR UN TERMINO DE 4  
ANOS

Vote for (THREE)  
Votar por (TRES)

- Jeanne Allen IND
- Justin Redfield IND
- Brandon Coats IND

**VILLAGE OF HAMPSHIRE  
FOR PRESIDENT TO SERVE A 4-YEAR TERM**  
ALDEA DE HAMPSHIRE  
PARA PRESIDENTE UN TERMINO DE 4 ANOS

Vote for (ONE)  
Votar por (UNO)

- Michael J. Reid, Jr. IND

**VILLAGE OF HAMPSHIRE  
FOR TRUSTEE TO SERVE A 4-YEAR TERM**  
ALDEA DE HAMPSHIRE  
PARA FIDUCIARIO SERVIR UN TERMINO DE 4  
ANOS

Vote for (THREE)  
Votar por (TRES)

- Carl Palmisano IND
- Erin Jarnebro IND
- Laura Pollastrini IND
- Heather Fodor IND

**VILLAGE OF HUNTLEY  
FOR PRESIDENT TO SERVE A 4-YEAR TERM**  
ALDEA DE HUNTLEY  
PARA PRESIDENTE UN TERMINO DE 4 ANOS

Vote for (ONE)  
Votar por (UNO)

- John M. Piwko IND
- Timothy J. Hoeft IND

**VILLAGE OF HUNTLEY  
FOR TRUSTEE TO SERVE A 4-YEAR TERM**  
ALDEA DE HUNTLEY  
PARA FIDUCIARIO SERVIR UN TERMINO DE 4  
ANOS

Vote for (THREE)  
Votar por (TRES)

- Marilyn Berendt IND
- JR Westberg IND
- Don Walz IND

**VILLAGE OF KANEVILLE  
FOR PRESIDENT TO SERVE A 4-YEAR TERM**  
ALDEA DE KANEVILLE  
PARA PRESIDENTE UN TERMINO DE 4 ANOS

Vote for (ONE)  
Votar por (UNO)

- Eric Brannstrom IND

**VILLAGE OF KANEVILLE  
FOR TRUSTEE TO SERVE A 4-YEAR TERM**  
ALDEA DE KANEVILLE  
PARA FIDUCIARIO SERVIR UN TERMINO DE 4  
ANOS

Vote for (FIVE)  
Votar por (CINCO)

No Candidate / No Hay Candidato



I HEREBY CERTIFY THAT THIS SPECIMEN BALLOT IS A TRUE AND CORRECT COPY OF THE OFFICES, CANDIDATES AND/OR PROPOSITIONS TO BE VOTED IN THE CONSOLIDATED ELECTION TO BE HELD IN KANE COUNTY ON TUESDAY, APRIL 1, 2025. CERTIFICO POR LA PRESENTE QUE ESTA BOLETA DE MUESTRA ES COPIA FIEL Y CORRECTA DE LOS PUESTOS, CANDIDATOS Y/O PROPOSICIONES QUE SERÁN SOMETIDAS A LA VOTACIÓN DURANTE LA ELECCIÓN CONSOLIDADA SERÁ CELEBRADA EN EL CONDADO KANE EL MARTES, 1 DE ABRIL DE 2025.

**JOHN A. CUNNINGHAM**  
Kane County Clerk  
Secretario del Condado de Kane

# OFFICIAL BALLOT / Boleta Oficial

**VILLAGE OF LILY LAKE  
FOR TRUSTEE TO SERVE A 4-YEAR TERM**  
ALDEA DE LILY LAKE  
PARA FIDUCIARIO SERVIR UN TERMINO DE 4 ANOS

Vote for (THREE)  
Votar por (TRES)

Pam Cotton Conn

Shelly Blomberg

-----  
Write-in Escribir en

**VILLAGE OF MAPLE PARK  
FOR PRESIDENT TO SERVE A 4-YEAR TERM**  
ALDEA DE MAPLE PARK  
PARA PRESIDENTE UN TERMINO DE 4 ANOS

Vote for (ONE)  
Votar por (UNO)

Christian Rebone IND

**VILLAGE OF MAPLE PARK  
FOR TRUSTEE TO SERVE A 4-YEAR TERM**  
ALDEA DE MAPLE PARK  
PARA FIDUCIARIO SERVIR UN TERMINO DE 4 ANOS

Vote for (THREE)  
Votar por (TRES)

Tonia Groezinger IND

J.T. Peloso IND

David Christopher Simon IND

**VILLAGE OF MONTGOMERY  
FOR PRESIDENT TO SERVE A 4-YEAR TERM**  
ALDEA DE MONTGOMERY  
PARA PRESIDENTE UN TERMINO DE 4 ANOS

Vote for (ONE)  
Votar por (UNO)

Matthew T. Brolley

**VILLAGE OF MONTGOMERY  
FOR CLERK TO SERVE A 4-YEAR TERM**  
ALDEA DE MONTGOMERY  
PARA SECRETARIO SERVIR UN TERMINO DE 4 ANOS

Vote for (ONE)  
Votar por (UNO)

Debra Buchanan

**VILLAGE OF MONTGOMERY  
FOR TRUSTEE TO SERVE A 4-YEAR TERM**  
ALDEA DE MONTGOMERY  
PARA FIDUCIARIO SERVIR UN TERMINO DE 4 ANOS

Vote for (THREE)  
Votar por (TRES)

Steve Jungermann

Theresa Sperling

Ben A. Brzoska

**VILLAGE OF NORTH AURORA  
FOR PRESIDENT TO SERVE A 4-YEAR TERM**  
ALDEA DE NORTH AURORA  
PARA PRESIDENTE UN TERMINO DE 4 ANOS

Vote for (ONE)  
Votar por (UNO)

Mark Gaffino

**VILLAGE OF NORTH AURORA  
FOR CLERK TO SERVE A 4-YEAR TERM**  
ALDEA DE NORTH AURORA  
PARA SECRETARIO SERVIR UN TERMINO DE 4 ANOS

Vote for (ONE)  
Votar por (UNO)

Holly O'Brien

**VILLAGE OF NORTH AURORA  
FOR TRUSTEE TO SERVE A 4-YEAR TERM**  
ALDEA DE NORTH AURORA  
PARA FIDUCIARIO SERVIR UN TERMINO DE 4 ANOS

Vote for (THREE)  
Votar por (TRES)

Michael Lowery

Todd Niedzwiedz

Carolyn Bird Salazar

**VILLAGE OF NORTH AURORA  
FOR LIBRARY TRUSTEES TO SERVE A 4-YEAR TERM**  
ALDEA DE NORTH AURORA  
PARA FIDUCIARIO DE BIBLIOTECA SERVIR UN TERMINO DE 4 ANOS

Vote for (FOUR)  
Votar por (CUATRO)

Tanya Berley

Darlene Bailey

Katherine Bogle

Keith Goode

Francisco Medrano

Laura McCoy

**VILLAGE OF NORTH AURORA  
FOR LIBRARY TRUSTEES TO SERVE AN UNEXPIRED 2-YEAR TERM**  
ALDEA DE NORTH AURORA  
PARA FIDUCIARIO DE BIBLIOTECA SERVIR UN TERMINO INCONCLUSO DE 2 ANOS

Vote for (ONE)  
Votar por (UNO)

No Candidate/No Hay Candidato

**VILLAGE OF PINGREE GROVE  
FOR TRUSTEE TO SERVE A 4-YEAR TERM**  
ALDEA DE PINGREE GROVE  
PARA FIDUCIARIO SERVIR UN TERMINO DE 4 ANOS

Vote for (THREE)  
Votar por (TRES)

Kevin Pini IND

Robert Wangles IND

-----  
Write-in Escribir en

**VILLAGE OF PINGREE GROVE  
FOR TRUSTEE TO SERVE AN UNEXPIRED 2-YEAR TERM**  
ALDEA DE PINGREE GROVE  
PARA FIDUCIARIO SERVIR UN TERMINO INCONCLUSO DE 2 ANOS

Vote for (ONE)  
Votar por (UNO)

Edward Tarnow IND

**VILLAGE OF SLEEPY HOLLOW  
FOR PRESIDENT TO SERVE A 4-YEAR TERM**  
ALDEA DE SLEEPY HOLLOW  
PARA PRESIDENTE UN TERMINO DE 4 ANOS

Vote for (ONE)  
Votar por (UNO)

Jennifer (Jenny) McGuire IND

Courtney E. Boe IND

**VILLAGE OF SLEEPY HOLLOW  
FOR TRUSTEE TO SERVE A 4-YEAR TERM**  
ALDEA DE SLEEPY HOLLOW  
PARA FIDUCIARIO SERVIR UN TERMINO DE 4 ANOS

Vote for (THREE)  
Votar por (TRES)

William Hof IND

Donald J. Ziemba IND

William J. Kennelly IND

Kelly L. Thomas IND

Sandra Losurdo IND

**VILLAGE OF SOUTH ELGIN  
FOR PRESIDENT TO SERVE A 4-YEAR TERM**  
ALDEA DE SOUTH ELGIN  
PARA PRESIDENTE UN TERMINO DE 4 ANOS

Vote for (ONE)  
Votar por (UNO)

Steve Ward IND



I HEREBY CERTIFY THAT THIS SPECIMEN BALLOT IS A TRUE AND CORRECT COPY OF THE OFFICES, CANDIDATES AND/OR PROPOSITIONS TO BE VOTED IN THE CONSOLIDATED ELECTION TO BE HELD IN KANE COUNTY ON TUESDAY, APRIL 1, 2025. CERTIFICO POR LA PRESENTE QUE ESTA BOLETA DE MUESTRA ES COPIA FIEL Y CORRECTA DE LOS PUESTOS, CANDIDATOS Y/O PROPOSICIONES QUE SERÁN SOMETIDAS A LA VOTACIÓN DURANTE LA ELECCIÓN CONSOLIDADA SERÁ CELEBRADA EN EL CONDADO KANE EL MARTES, 1 DE ABRIL DE 2025.

*John A. Cunningham*

**JOHN A. CUNNINGHAM**  
Kane County Clerk  
Secretario del Condado de Kane



# OFFICIAL BALLOT / Boleta Oficial

**VILLAGE OF SOUTH ELGIN  
FOR CLERK TO SERVE A 4-YEAR TERM  
ALDEA DE SOUTH ELGIN  
PARA SECRETARIO SERVIR UN TERMINO DE 4 ANOS**

Vote for (ONE)  
Votar por (UNO)

Pamela Blair IND

Margo Gray IND

---

**VILLAGE OF SOUTH ELGIN  
FOR TRUSTEE TO SERVE A 4-YEAR TERM  
ALDEA DE SOUTH ELGIN  
PARA FIDUCIARIO SERVIR UN TERMINO DE 4 ANOS**

Vote for (THREE)  
Votar por (TRES)

Greg Lieser IND

Michael Kolodziej IND

Jennifer Barconi IND

---

**VILLAGE OF SUGAR GROVE  
FOR PRESIDENT TO SERVE A 4-YEAR TERM  
ALDEA DE SUGAR GROVE  
PARA PRESIDENTE UN TERMINO DE 4 ANOS**

Vote for (ONE)  
Votar por (UNO)

Jennifer Konen IND

Susan Stillwell IND

---

**VILLAGE OF SUGAR GROVE  
FOR TRUSTEE TO SERVE A 4-YEAR TERM  
ALDEA DE SUGAR GROVE  
PARA FIDUCIARIO SERVIR UN TERMINO DE 4 ANOS**

Vote for (THREE)  
Votar por (TRES)

Nora London IND

Anthony "Tony" Speciale IND

James "Jamie" White IND

Michael Roskopf IND

---

**VILLAGE OF VIRGIL  
FOR TRUSTEE TO SERVE A 4-YEAR TERM  
ALDEA DE VIRGIL  
PARA FIDUCIARIO SERVIR UN TERMINO DE 4 ANOS**

Vote for (THREE)  
Votar por (TRES)

Cheryl Hackbarth IND

James Giannini IND

Roger Markham IND

Ryan Markham IND

**VILLAGE OF WAYNE  
FOR TRUSTEE TO SERVE A 4-YEAR TERM  
ALDEA DE WAYNE  
PARA FIDUCIARIO SERVIR UN TERMINO DE 4 ANOS**

Vote for (THREE)  
Votar por (TRES)

Karen Kaluzsa

Emily Miller

Kathleen Tranchida

Anna Cunanan

Michelle Mourousias

Mike Dimitroff

Thomas G. Kennedy

**VILLAGE OF WEST DUNDEE  
FOR PRESIDENT TO SERVE A 4-YEAR TERM  
ALDEA DE WEST DUNDEE  
PARA PRESIDENTE UN TERMINO DE 4 ANOS**

Vote for (ONE)  
Votar por (UNO)

Christopher Nelson IND

**VILLAGE OF WEST DUNDEE  
FOR TRUSTEE TO SERVE A 4-YEAR TERM  
ALDEA DE WEST DUNDEE  
PARA FIDUCIARIO SERVIR UN TERMINO DE 4 ANOS**

Vote for (THREE)  
Votar por (TRES)

Cheryl Anderley IND

Dan Wilbrandt IND

Cheryl Alogogianis IND

**TOWNSHIP  
MUNICIPIO**

**AURORA TOWNSHIP  
FOR SUPERVISOR  
MUNICIPIO DE AURORA  
PARA SUPERVISOR**

Vote for (ONE)  
Votar por (UNO)

William "Bill" Catching DEM

**AURORA TOWNSHIP  
FOR CLERK  
MUNICIPIO DE AURORA  
PARA SECRETARIO**

Vote for (ONE)  
Votar por (UNO)

Angela C. Thomas DEM

**AURORA TOWNSHIP  
FOR ASSESSOR  
MUNICIPIO DE AURORA  
PARA ASESOR**

Vote for (ONE)  
Votar por (UNO)

Davis Offutt REP

**AURORA TOWNSHIP  
FOR HIGHWAY COMMISSIONER  
MUNICIPIO DE AURORA  
PARA COMISIONADO DE CARRETERAS**

Vote for (ONE)  
Votar por (UNO)

Jason Owens DEM

**AURORA TOWNSHIP  
FOR TRUSTEE  
MUNICIPIO DE AURORA  
PARA FIDUCIARIO**

Vote for (FOUR)  
Votar por (CUATRO)

Bonnie Lee Kunkel DEM

Samuel Nunez DEM

Dolores M. Hicks DEM

Sherry Spears DEM

**BATAVIA TOWNSHIP  
FOR SUPERVISOR  
MUNICIPIO DE BATAVIA  
PARA SUPERVISOR**

Vote for (ONE)  
Votar por (UNO)

John West (Batavia Township 2025)

**BATAVIA TOWNSHIP  
FOR CLERK  
MUNICIPIO DE BATAVIA  
PARA SECRETARIO**

Vote for (ONE)  
Votar por (UNO)

Leigh M. Tracy (Batavia Township 2025)

**BATAVIA TOWNSHIP  
FOR ASSESSOR  
MUNICIPIO DE BATAVIA  
PARA ASESOR**

Vote for (ONE)  
Votar por (UNO)

Tammy J. Kavanaugh (Batavia Township 2025)

**BATAVIA TOWNSHIP  
FOR HIGHWAY COMMISSIONER  
MUNICIPIO DE BATAVIA  
PARA COMISIONADO DE CARRETERAS**

Vote for (ONE)  
Votar por (UNO)

Christopher R. Long (Batavia Township 2025)



I HEREBY CERTIFY THAT THIS SPECIMEN BALLOT IS A TRUE AND CORRECT COPY OF THE OFFICES, CANDIDATES AND/OR PROPOSITIONS TO BE VOTED IN THE CONSOLIDATED ELECTION TO BE HELD IN KANE COUNTY ON TUESDAY, APRIL 1, 2025. CERTIFICO POR LA PRESENTE QUE ESTA BOLETA DE MUESTRA ES COPIA FIEL Y CORRECTA DE LOS PUESTOS, CANDIDATOS Y/O PROPOSICIONES QUE SERÁN SOMETIDAS A LA VOTACIÓN DURANTE LA ELECCIÓN CONSOLIDADA SERÁ CELEBRADA EN EL CONDADO KANE EL MARTES, 1 DE ABRIL DE 2025.

**JOHN A. CUNNINGHAM**  
Kane County Clerk  
Secretario del Condado de Kane



# OFFICIAL BALLOT / Boleta Oficial

**BATAVIA TOWNSHIP  
FOR TRUSTEE**  
MUNICIPIO DE BATAVIA  
PARA FIDUCIARIO

Vote for (FOUR)  
Votar por (CUATRO)

Walter J. Donat (Batavia Township 2025)

Michelle B. Hilliard (Batavia Township 2025)

Troy Tousana (Batavia Township 2025)

Jennifer Zorn (Batavia Township 2025)

---

**BIG ROCK TOWNSHIP  
FOR SUPERVISOR**  
MUNICIPIO DE BIG ROCK  
PARA SUPERVISOR

Vote for (ONE)  
Votar por (UNO)

Dean Hummell IND

---

**BIG ROCK TOWNSHIP  
FOR CLERK**  
MUNICIPIO DE BIG ROCK  
PARA SECRETARIO

Vote for (ONE)  
Votar por (UNO)

Jennifer Smith IND

---

**BIG ROCK TOWNSHIP  
FOR ASSESSOR**  
MUNICIPIO DE BIG ROCK  
PARA ASESOR

Vote for (ONE)  
Votar por (UNO)

No Candidate/No Hay Candidato

---

**BIG ROCK TOWNSHIP  
FOR HIGHWAY COMMISSIONER**  
MUNICIPIO DE BIG ROCK  
PARA COMISIONADO DE CARRETERAS

Vote for (ONE)  
Votar por (UNO)

Wade Thompson IND

---

**BIG ROCK TOWNSHIP  
FOR TRUSTEE**  
MUNICIPIO DE BIG ROCK  
PARA FIDUCIARIO

Vote for (FOUR)  
Votar por (CUATRO)

Paul Wedeen IND

Katherine Buckson IND

Amy Schoger IND

Dawn M. Lynch IND

**BLACKBERRY TOWNSHIP  
FOR SUPERVISOR**  
MUNICIPIO DE BLACKBERRY  
PARA SUPERVISOR

Vote for (ONE)  
Votar por (UNO)

Esther Steel - Blackberry United IND

---

**BLACKBERRY TOWNSHIP  
FOR CLERK**  
MUNICIPIO DE BLACKBERRY  
PARA SECRETARIO

Vote for (ONE)  
Votar por (UNO)

Carmella Hummel - Blackberry United IND

Write-in Escribir en \_\_\_\_\_

---

**BLACKBERRY TOWNSHIP  
FOR ASSESSOR**  
MUNICIPIO DE BLACKBERRY  
PARA ASESOR

Vote for (ONE)  
Votar por (UNO)

Riley J. Kavanaugh - Blackberry United IND

---

**BLACKBERRY TOWNSHIP  
FOR HIGHWAY COMMISSIONER**  
MUNICIPIO DE BLACKBERRY  
PARA COMISIONADO DE CARRETERAS

Vote for (ONE)  
Votar por (UNO)

Rodney Feece - Blackberry United IND

---

**BLACKBERRY TOWNSHIP  
FOR TRUSTEE**  
MUNICIPIO DE BLACKBERRY  
PARA FIDUCIARIO

Vote for (FOUR)  
Votar por (CUATRO)

Harley Veldhuizen - Blackberry United IND

Robert "Eric" Anderson - Blackberry United IND

Judith Childress - Blackberry United IND

William C. Earle - Blackberry United IND

---

**BURLINGTON TOWNSHIP  
FOR SUPERVISOR**  
MUNICIPIO DE BURLINGTON  
PARA SUPERVISOR

Vote for (ONE)  
Votar por (UNO)

John M. Beach IND

---

**BURLINGTON TOWNSHIP  
FOR CLERK**  
MUNICIPIO DE BURLINGTON  
PARA SECRETARIO

Vote for (ONE)  
Votar por (UNO)

Donna J. Austin IND

**BURLINGTON TOWNSHIP  
FOR ASSESSOR**  
MUNICIPIO DE BURLINGTON  
PARA ASESOR

Vote for (ONE)  
Votar por (UNO)

Michael Romanelli IND

---

**BURLINGTON TOWNSHIP  
FOR HIGHWAY COMMISSIONER**  
MUNICIPIO DE BURLINGTON  
PARA COMISIONADO DE CARRETERAS

Vote for (ONE)  
Votar por (UNO)

Todd Gray IND

---

**BURLINGTON TOWNSHIP  
FOR TRUSTEE**  
MUNICIPIO DE BURLINGTON  
PARA FIDUCIARIO

Vote for (FOUR)  
Votar por (CUATRO)

Joy Beach IND

Glenn Gray IND

Jesse Heffernan IND

Virginia (Ginger) Romano IND

Riley Clark IND

---

**CAMPTON TOWNSHIP  
FOR SUPERVISOR**  
MUNICIPIO DE CAMPTON  
PARA SUPERVISOR

Vote for (ONE)  
Votar por (UNO)

John M. Kupar IND

---

**CAMPTON TOWNSHIP  
FOR CLERK**  
MUNICIPIO DE CAMPTON  
PARA SECRETARIO

Vote for (ONE)  
Votar por (UNO)

Richard G. Johansen IND

---

**CAMPTON TOWNSHIP  
FOR ASSESSOR**  
MUNICIPIO DE CAMPTON  
PARA ASESOR

Vote for (ONE)  
Votar por (UNO)

Alan D. Rottmann IND

---

**CAMPTON TOWNSHIP  
FOR HIGHWAY COMMISSIONER**  
MUNICIPIO DE CAMPTON  
PARA COMISIONADO DE CARRETERAS

Vote for (ONE)  
Votar por (UNO)

Sam Gallucci IND



I HEREBY CERTIFY THAT THIS SPECIMEN BALLOT IS A TRUE AND CORRECT COPY OF THE OFFICES, CANDIDATES AND/OR PROPOSITIONS TO BE VOTED IN THE CONSOLIDATED ELECTION TO BE HELD IN KANE COUNTY ON TUESDAY, APRIL 1, 2025. CERTIFICO POR LA PRESENTE QUE ESTA BOLETA DE MUESTRA ES COPIA FIEL Y CORRECTA DE LOS PUESTOS, CANDIDATOS Y/O PROPOSICIONES QUE SERÁN SOMETIDAS A LA VOTACIÓN DURANTE LA ELECCIÓN CONSOLIDADA SERÁ CELEBRADA EN EL CONDADO KANE EL MARTES, 1 DE ABRIL DE 2025.

*John A. Cunningham*

**JOHN A. CUNNINGHAM**  
Kane County Clerk  
Secretario del Condado de Kane

# OFFICIAL BALLOT / Boleta Oficial

**CAMPTON TOWNSHIP  
FOR TRUSTEE**  
*MUNICIPIO DE CAMPTON  
PARA FIDUCIARIO*

Vote for (FOUR)  
*Votar por (CUATRO)*

- Mark Metzger IND

---

- Jesse Varsho IND

---

- David "Howie" Leighty IND

---

- Cory Miller IND

---

- Elizabeth J. Murphy IND

**DUNDEE TOWNSHIP  
FOR SUPERVISOR**  
*MUNICIPIO DE DUNDEE  
PARA SUPERVISOR*

Vote for (ONE)  
*Votar por (UNO)*

- Arin Thrower REP

---

- Shefali Shah DEM

**DUNDEE TOWNSHIP  
FOR CLERK**  
*MUNICIPIO DE DUNDEE  
PARA SECRETARIO*

Vote for (ONE)  
*Votar por (UNO)*

- Deborah Brennan REP

---

- Elizabeth Clark DEM

**DUNDEE TOWNSHIP  
FOR ASSESSOR**  
*MUNICIPIO DE DUNDEE  
PARA ASESOR*

Vote for (ONE)  
*Votar por (UNO)*

- Michael Bielak REP

**DUNDEE TOWNSHIP  
FOR HIGHWAY COMMISSIONER**  
*MUNICIPIO DE DUNDEE  
PARA COMISIONADO DE CARRETERAS*

Vote for (ONE)  
*Votar por (UNO)*

- David E. Schulz IND

**DUNDEE TOWNSHIP  
FOR TRUSTEE**  
*MUNICIPIO DE DUNDEE  
PARA FIDUCIARIO*

Vote for (FOUR)  
*Votar por (CUATRO)*

- Kenneth J. Schaffer REP

---

- Richard Ahrens REP

---

- Susan Romano REP

---

- Autumn L. Sheppard REP

---

- Henry Fixemer DEM

---

- Susan F. Harney DEM

---

- Charity L. Drake DEM

---

- Melissa Day DEM

**ELGIN TOWNSHIP  
FOR SUPERVISOR**  
*MUNICIPIO DE ELGIN  
PARA SUPERVISOR*

Vote for (ONE)  
*Votar por (UNO)*

- Kenneth C. Bruderle REP

---

- Verner (Vern) Tepe DEM

**ELGIN TOWNSHIP  
FOR CLERK**  
*MUNICIPIO DE ELGIN  
PARA SECRETARIO*

Vote for (ONE)  
*Votar por (UNO)*

- Karen Dowling REP

---

- Lois Swatscheno DEM

**ELGIN TOWNSHIP  
FOR ASSESSOR**  
*MUNICIPIO DE ELGIN  
PARA ASESOR*

Vote for (ONE)  
*Votar por (UNO)*

- Steven P. Surnicki REP

**ELGIN TOWNSHIP  
FOR HIGHWAY COMMISSIONER**  
*MUNICIPIO DE ELGIN  
PARA COMISIONADO DE CARRETERAS*

Vote for (ONE)  
*Votar por (UNO)*

- Jason Krabbe REP

**ELGIN TOWNSHIP  
FOR TRUSTEE**  
*MUNICIPIO DE ELGIN  
PARA FIDUCIARIO*

Vote for (FOUR)  
*Votar por (CUATRO)*

- Janet Rogalla REP

---

- Daniel Caban REP

---

- Mark Bialek REP

---

- Michael J. Kenyon Sr. REP

---

- Carl Strathmann DEM

---

- Juan Silva DEM

---

- Janice Bennett DEM

---

- Ed Hanson DEM

**GENEVA TOWNSHIP  
FOR SUPERVISOR**  
*MUNICIPIO DE GENEVA  
PARA SUPERVISOR*

Vote for (ONE)  
*Votar por (UNO)*

- J. Patrick Jaeger - Township Independence Party

**GENEVA TOWNSHIP  
FOR CLERK**  
*MUNICIPIO DE GENEVA  
PARA SECRETARIO*

Vote for (ONE)  
*Votar por (UNO)*

- Geoffrey Carreiro - Township Independence Party

**GENEVA TOWNSHIP  
FOR ASSESSOR**  
*MUNICIPIO DE GENEVA  
PARA ASESOR*

Vote for (ONE)  
*Votar por (UNO)*

- Alex W. Fritz - Township Independence Party

**GENEVA TOWNSHIP  
FOR HIGHWAY COMMISSIONER**  
*MUNICIPIO DE GENEVA  
PARA COMISIONADO DE CARRETERAS*

Vote for (ONE)  
*Votar por (UNO)*

- Michael W. Abts - Township Independence Party



I HEREBY CERTIFY THAT THIS SPECIMEN BALLOT IS A TRUE AND CORRECT COPY OF THE OFFICES, CANDIDATES AND/OR PROPOSITIONS TO BE VOTED IN THE CONSOLIDATED ELECTION TO BE HELD IN KANE COUNTY ON TUESDAY, APRIL 1, 2025. CERTIFICO POR LA PRESENTE QUE ESTA BOLETA DE MUESTRA ES COPIA FIEL Y CORRECTA DE LOS PUESTOS, CANDIDATOS Y/O PROPOSICIONES QUE SERÁN SOMETIDAS A LA VOTACIÓN DURANTE LA ELECCIÓN CONSOLIDADA SERÁ CELEBRADA EN EL CONDADO KANE EL MARTES, 1 DE ABRIL DE 2025.

**JOHN A. CUNNINGHAM**  
Kane County Clerk  
Secretario del Condado de Kane

# OFFICIAL BALLOT / Boleta Oficial

**GENEVA TOWNSHIP  
FOR TRUSTEE**  
MUNICIPIO DE GENEVA  
PARA FIDUCIARIO

Vote for (FOUR)  
Votar por (CUATRO)

John Connolly - Township Independence Party

Robert Kovacs - Township Independence Party

Scott Queen - Township Independence Party

Joy Ogden Abts - Township Independence Party

---

**HAMPSHIRE TOWNSHIP  
FOR SUPERVISOR**  
MUNICIPIO DE HAMPSHIRE  
PARA SUPERVISOR

Vote for (ONE)  
Votar por (UNO)

Jody Remakel IND

---

**HAMPSHIRE TOWNSHIP  
FOR CLERK**  
MUNICIPIO DE HAMPSHIRE  
PARA SECRETARIO

Vote for (ONE)  
Votar por (UNO)

Lori Marwig IND

---

**HAMPSHIRE TOWNSHIP  
FOR ASSESSOR**  
MUNICIPIO DE HAMPSHIRE  
PARA ASESOR

Vote for (ONE)  
Votar por (UNO)

Rebecca Penkaty IND

---

**HAMPSHIRE TOWNSHIP  
FOR HIGHWAY COMMISSIONER**  
MUNICIPIO DE HAMPSHIRE  
PARA COMISIONADO DE CARRETERAS

Vote for (ONE)  
Votar por (UNO)

Daniel Rowlett IND

---

**HAMPSHIRE TOWNSHIP  
FOR TRUSTEE**  
MUNICIPIO DE HAMPSHIRE  
PARA FIDUCIARIO

Vote for (FOUR)  
Votar por (CUATRO)

Dale Drendel IND

Steven L. Gustafson IND

Roger R. Paddock IND

Robert Becker IND

**KANEVILLE TOWNSHIP  
FOR SUPERVISOR**  
MUNICIPIO DE KANEVILLE  
PARA SUPERVISOR

Vote for (ONE)  
Votar por (UNO)

Daniel M. Koebele IND

Marcus Withey IND

---

**KANEVILLE TOWNSHIP  
FOR CLERK**  
MUNICIPIO DE KANEVILLE  
PARA SECRETARIO

Vote for (ONE)  
Votar por (UNO)

Kimberly Wendling IND

---

**KANEVILLE TOWNSHIP  
FOR ASSESSOR**  
MUNICIPIO DE KANEVILLE  
PARA ASESOR

Vote for (ONE)  
Votar por (UNO)

Catherine Kovach IND

---

**KANEVILLE TOWNSHIP  
FOR HIGHWAY COMMISSIONER**  
MUNICIPIO DE KANEVILLE  
PARA COMISIONADO DE CARRETERAS

Vote for (ONE)  
Votar por (UNO)

Dale Pierson IND

---

**KANEVILLE TOWNSHIP  
FOR TRUSTEE**  
MUNICIPIO DE KANEVILLE  
PARA FIDUCIARIO

Vote for (FOUR)  
Votar por (CUATRO)

Matthew P. Harvell IND

Patrick J. Bradford IND

Gerald R. Long IND

Brett Gobel IND

---

**PLATO TOWNSHIP  
FOR SUPERVISOR**  
MUNICIPIO DE PLATO  
PARA SUPERVISOR

Vote for (ONE)  
Votar por (UNO)

Michael G. McMahon

---

**PLATO TOWNSHIP  
FOR CLERK**  
MUNICIPIO DE PLATO  
PARA SECRETARIO

Vote for (ONE)  
Votar por (UNO)

Ron Straub

**PLATO TOWNSHIP  
FOR ASSESSOR**  
MUNICIPIO DE PLATO  
PARA ASESOR

Vote for (ONE)  
Votar por (UNO)

No Candidate/No Hay Candidato

---

**PLATO TOWNSHIP  
FOR HIGHWAY COMMISSIONER**  
MUNICIPIO DE PLATO  
PARA COMISIONADO DE CARRETERAS

Vote for (ONE)  
Votar por (UNO)

Larry Trainor

---

**PLATO TOWNSHIP  
FOR TRUSTEE**  
MUNICIPIO DE PLATO  
PARA FIDUCIARIO

Vote for (FOUR)  
Votar por (CUATRO)

Jerome W. Hulke

Jacob Myers

Heather S. Wallace

---

**RUTLAND TOWNSHIP  
FOR SUPERVISOR**  
MUNICIPIO DE RUTLAND  
PARA SUPERVISOR

Vote for (ONE)  
Votar por (UNO)

Raul Lemus IND

---

**RUTLAND TOWNSHIP  
FOR CLERK**  
MUNICIPIO DE RUTLAND  
PARA SECRETARIO

Vote for (ONE)  
Votar por (UNO)

Cheryl Lemus IND

---

**RUTLAND TOWNSHIP  
FOR ASSESSOR**  
MUNICIPIO DE RUTLAND  
PARA ASESOR

Vote for (ONE)  
Votar por (UNO)

Gary W. Fritz IND

---

**RUTLAND TOWNSHIP  
FOR HIGHWAY COMMISSIONER**  
MUNICIPIO DE RUTLAND  
PARA COMISIONADO DE CARRETERAS

Vote for (ONE)  
Votar por (UNO)

John Alesi IND



I HEREBY CERTIFY THAT THIS SPECIMEN BALLOT IS A TRUE AND CORRECT COPY OF THE OFFICES, CANDIDATES AND/OR PROPOSITIONS TO BE VOTED IN THE CONSOLIDATED ELECTION TO BE HELD IN KANE COUNTY ON TUESDAY, APRIL 1, 2025. CERTIFICO POR LA PRESENTE QUE ESTA BOLETA DE MUESTRA ES COPIA FIEL Y CORRECTA DE LOS PUESTOS, CANDIDATOS Y/O PROPOSICIONES QUE SERÁN SOMETIDAS A LA VOTACIÓN DURANTE LA ELECCIÓN CONSOLIDADA SERÁ CELEBRADA EN EL CONDADO KANE EL MARTES, 1 DE ABRIL DE 2025.

*John A. Cunningham*

**JOHN A. CUNNINGHAM**  
Kane County Clerk  
Secretario del Condado de Kane



# OFFICIAL BALLOT / Boleta Oficial

**RUTLAND TOWNSHIP  
FOR TRUSTEE**  
MUNICIPIO DE RUTLAND  
PARA FIDUCIARIO

Vote for (FOUR)  
Votar por (CUATRO)

Richard Artz IND

Janet Siers IND

Scott Swidler IND

Write-in *Escribir en*

Write-in *Escribir en*

**ST CHARLES TOWNSHIP  
FOR SUPERVISOR**  
MUNICIPIO DE ST CHARLES  
PARA SUPERVISOR

Vote for (ONE)  
Votar por (UNO)

Ronald C. Johnson-St. Charles United

**ST CHARLES TOWNSHIP  
FOR CLERK**  
MUNICIPIO DE ST CHARLES  
PARA SECRETARIO

Vote for (ONE)  
Votar por (UNO)

Terry Cross - St. Charles United

**ST CHARLES TOWNSHIP  
FOR ASSESSOR**  
MUNICIPIO DE ST CHARLES  
PARA ASESOR

Vote for (ONE)  
Votar por (UNO)

Diane Hemmingsen - St. Charles United

**ST CHARLES TOWNSHIP  
FOR HIGHWAY COMMISSIONER**  
MUNICIPIO DE ST CHARLES  
PARA COMISIONADO DE CARRETERAS

Vote for (ONE)  
Votar por (UNO)

Steve Frohling - St. Charles United

**ST CHARLES TOWNSHIP  
FOR TRUSTEE**  
MUNICIPIO DE ST CHARLES  
PARA FIDUCIARIO

Vote for (FOUR)  
Votar por (CUATRO)

Mary Lynn Swanson - St. Charles United

James J. Flanigan - St. Charles United

John Hoscheit - St. Charles United

Anthony Farinella - St. Charles United

**SUGAR GROVE TOWNSHIP  
FOR SUPERVISOR**  
MUNICIPIO DE SUGAR GROVE  
PARA SUPERVISOR

Vote for (ONE)  
Votar por (UNO)

Thomas E. Rowe IND

**SUGAR GROVE TOWNSHIP  
FOR CLERK**  
MUNICIPIO DE SUGAR GROVE  
PARA SECRETARIO

Vote for (ONE)  
Votar por (UNO)

Marion L. Bond IND

**SUGAR GROVE TOWNSHIP  
FOR ASSESSOR**  
MUNICIPIO DE SUGAR GROVE  
PARA ASESOR

Vote for (ONE)  
Votar por (UNO)

Curt John Karas IND

**SUGAR GROVE TOWNSHIP  
FOR HIGHWAY COMMISSIONER**  
MUNICIPIO DE SUGAR GROVE  
PARA COMISIONADO DE CARRETERAS

Vote for (ONE)  
Votar por (UNO)

Douglas Musser IND

**SUGAR GROVE TOWNSHIP  
FOR TRUSTEE**  
MUNICIPIO DE SUGAR GROVE  
PARA FIDUCIARIO

Vote for (FOUR)  
Votar por (CUATRO)

Lewis Medina IND

Jerry Elliott IND

Jonathan Bobbe IND

Rick L. Montalto IND

**SUGAR GROVE TOWNSHIP  
FOR COMMUNITY BUILDING MANAGERS**  
MUNICIPIO DE SUGAR GROVE  
PARA ADMINISTRADORES DE EDIFICIOS  
COMUNITARIOS

Vote for (THREE)  
Votar por (TRES)

Steven Kowalczyk IND

Chris Sutton IND

Scott Stalcup IND

**VIRGIL TOWNSHIP  
FOR SUPERVISOR**  
MUNICIPIO DE VIRGIL  
PARA SUPERVISOR

Vote for (ONE)  
Votar por (UNO)

Bridget Ruf

**VIRGIL TOWNSHIP  
FOR CLERK**  
MUNICIPIO DE VIRGIL  
PARA SECRETARIO

Vote for (ONE)  
Votar por (UNO)

Lara A. Ekstrom

**VIRGIL TOWNSHIP  
FOR ASSESSOR**  
MUNICIPIO DE VIRGIL  
PARA ASESOR

Vote for (ONE)  
Votar por (UNO)

Michael M. Yagen

**VIRGIL TOWNSHIP  
FOR HIGHWAY COMMISSIONER**  
MUNICIPIO DE VIRGIL  
PARA COMISIONADO DE CARRETERAS

Vote for (ONE)  
Votar por (UNO)

Peter Fabrizius

**VIRGIL TOWNSHIP  
FOR TOWNSHIP TRUSTEE**  
MUNICIPIO DE VIRGIL  
PARA FIDUCIARIO

Vote for (FOUR)  
Votar por (CUATRO)

Matthew W. Ekstrom

Mary P. Kahl

Kevin Poust

Kenneth Lee Gilkey

David Francis Geisen

**PARK  
PARQUE**

**BARTLETT PARK DISTRICT  
FOR PARK COMMISSIONER TO SERVE A FULL  
6-YEAR TERM**  
DISTRITO DE PARQUES BARTLETT  
PARA COMISIONADO DE PARQUES SERVIR UN  
TERMINO DE 6 ANOS

Vote for (TWO)  
Votar por (DOS)

Jody Fagan

Nathan Botkin



I HEREBY CERTIFY THAT THIS SPECIMEN BALLOT IS A TRUE AND CORRECT COPY OF THE OFFICES, CANDIDATES AND/OR PROPOSITIONS TO BE VOTED IN THE CONSOLIDATED ELECTION TO BE HELD IN KANE COUNTY ON TUESDAY, APRIL 1, 2025. CERTIFICO POR LA PRESENTE QUE ESTA BOLETA DE MUESTRA ES COPIA FIEL Y CORRECTA DE LOS PUESTOS, CANDIDATOS Y/O PROPOSICIONES QUE SERÁN SOMETIDAS A LA VOTACIÓN DURANTE LA ELECCIÓN CONSOLIDADA SERÁ CELEBRADA EN EL CONDADO KANE EL MARTES, 5 DE NOVIEMBRE DEL 2024.

**JOHN A. CUNNINGHAM**  
Kane County Clerk  
Secretario del Condado de Kane



# OFFICIAL BALLOT / Boleta Oficial

**BATAVIA PARK DISTRICT  
FOR PARK COMMISSIONER TO SERVE A FULL  
6-YEAR TERM**  
*DISTRITO DE PARQUES BATAVIA  
PARA COMISIONADO DE PARQUES SERVIR UN  
TERMINO DE 6 ANOS*

Vote for (TWO)  
*Votar por (DOS)*

Amanda Slaiher

Anique Drouin

**BIG ROCK PARK DISTRICT  
FOR PARK COMMISSIONER TO SERVE A  
FULL-6 YEAR TERM**  
*DISTRITO DE PARQUES BIG ROCK  
PARA COMISIONADO DE PARQUES SERVIR UN  
TERMINO DE 6 ANOS*

Vote for (TWO)  
*Votar por (DOS)*

No Candidate *No Hay Candidato*

Write-in *Escribir en*

**BIG ROCK PARK DISTRICT  
FOR PARK COMMISSIONER TO SERVE AN  
UNEXPIRED 4-YEAR TERM**  
*DISTRITO DE PARQUES BIG ROCK  
PARA COMISIONADO DE PARQUES SERVIR UN  
TERMINO INCONCLUSO DE 4 ANOS*

Vote for (ONE)  
*Votar por (UNO)*

Amanda Hummell

**BIG ROCK PARK DISTRICT  
FOR PARK COMMISSIONER TO SERVE AN  
UNEXPIRED 2-YEAR TERM**  
*DISTRITO DE PARQUES BIG ROCK  
PARA COMISIONADO DE PARQUES SERVIR UN  
TERMINO INCONCLUSO DE 2 ANOS*

Vote for (TWO)  
*Votar por (DOS)*

Ryan Hummell

Tara Mathewson

**BURLINGTON PARK DISTRICT  
FOR PARK COMMISSIONER TO SERVE A FULL  
6-YEAR TERM**  
*DISTRITO DE PARQUES BURLINGTON  
PARA COMISIONADO DE PARQUES SERVIR UN  
TERMINO DE 6 ANOS*

Vote for (THREE)  
*Votar por (TRES)*

No Candidate *No Hay Candidato*

**DUNDEE TOWNSHIP PARK DISTRICT  
FOR PARK COMMISSIONER TO SERVE A FULL  
6-YEAR TERM**  
*DISTRITO DE PARQUES DUNDEE  
PARA COMISIONADO DE PARQUES SERVIR UN  
TERMINO DE 6 ANOS*

Vote for (TWO)  
*Votar por (DOS)*

Erin O' Leary

John Meschewski

**FOX VALLEY PARK DISTRICT  
FOR PARK COMMISSIONER AT LARGE TO  
SERVE A FULL 4-YEAR TERM**  
*DISTRITO DE PARQUES FOX VALLEY  
PARA COMISIONADO DE PARQUES SERVIR UN  
TERMINO DE 4 ANOS*

Vote for (ONE)  
*Votar por (UNO)*

Joe Grisson, III

Edward Ash

**FOX VALLEY PARK DISTRICT  
FOR PARK COMMISSIONER TO SERVE A FULL  
4-YEAR TERM-DISTRICT 1**  
*DISTRITO DE PARQUES FOX VALLEY  
PARA COMISIONADO DE PARQUES SERVIR UN  
TERMINO DE 4 ANOS DISTRITO 1*

Vote for (ONE)  
*Votar por (UNO)*

Sandra Schmitt

Chuck Anderson

**FOX VALLEY PARK DISTRICT  
FOR PARK COMMISSIONER TO SERVE A FULL  
4-YEAR TERM-DISTRICT 2**  
*DISTRITO DE PARQUES FOX VALLEY  
PARA COMISIONADO DE PARQUES SERVIR UN  
TERMINO DE 4 ANOS DISTRITO 2*

Vote for (ONE)  
*Votar por (UNO)*

Mary Anne Cummings

**FOX VALLEY PARK DISTRICT  
FOR PARK COMMISSIONER TO SERVE A FULL  
4-YEAR TERM-DISTRICT 3**  
*DISTRITO DE PARQUES FOX VALLEY  
PARA COMISIONADO DE PARQUES SERVIR UN  
TERMINO DE 4 ANOS DISTRITO 3*

Vote for (ONE)  
*Votar por (UNO)*

Marea Berkley Clement

**FOX VALLEY PARK DISTRICT  
FOR PARK COMMISSIONER TO SERVE AN  
UNEXPIRED 2-YEAR TERM-DISTRICT 3**  
*DISTRITO DE PARQUES FOX VALLEY  
PARA COMISIONADO DE PARQUES SERVIR UN  
TERMINO INCONCLUSO DE 2 ANOS DISTRITO 3*

Vote for (ONE)  
*Votar por (UNO)*

Aimee Cisneros

**GENEVA PARK DISTRICT  
FOR PARK COMMISSIONER TO SERVE A FULL  
6-YEAR TERM**  
*DISTRITO DE PARQUES GENEVA  
PARA COMISIONADO DE PARQUES SERVIR UN  
TERMINO DE 6 ANOS*

Vote for (TWO)  
*Votar por (DOS)*

Bre Cullen

Jay Moffat

**GENEVA PARK DISTRICT  
FOR PARK COMMISSIONER TO SERVE A  
UNEXPIRED 2-YEAR TERM**  
*DISTRITO DE PARQUES GENEVA  
PARA COMISIONADO DE PARQUES SERVIR UN  
TERMINO INCONCLUSO DE 2 ANOS*

Vote for (ONE)  
*Votar por (UNO)*

Gabriel Kaven

**HAMPSHIRE PARK DISTRICT  
FOR PARK COMMISSIONER TO SERVE A FULL  
6-YEAR TERM**  
*DISTRITO DE PARQUES HAMPSHIRE  
PARA COMISIONADO DE PARQUES SERVIR UN  
TERMINO DE 6 ANOS*

Vote for (ONE)  
*Votar por (UNO)*

Jennifer M. Reid

**HUNTLEY PARK DISTRICT  
FOR PARK COMMISSIONER TO SERVE A FULL  
6-YEAR TERM**  
*DISTRITO DE PARQUES HUNTLEY  
PARA COMISIONADO DE PARQUES SERVIR UN  
TERMINO DE 6 ANOS*

Vote for (ONE)  
*Votar por (UNO)*

Keith Wold

**HUNTLEY PARK DISTRICT  
FOR PARK COMMISSIONER TO SERVE A 2-  
YEAR TERM**  
*DISTRITO DE PARQUES HUNTLEY  
PARA COMISIONADO DE PARQUES SERVIR UN  
TERMINO DE 2 ANOS*

Vote for (ONE)  
*Votar por (UNO)*

No Candidate *No Hay Candidato*



I HEREBY CERTIFY THAT THIS SPECIMEN BALLOT IS A TRUE AND CORRECT COPY OF THE OFFICES, CANDIDATES AND/OR PROPOSITIONS TO BE VOTED IN THE CONSOLIDATED ELECTION TO BE HELD IN KANE COUNTY ON TUESDAY, APRIL 1, 2025. CERTIFICO POR LA PRESENTE QUE ESTA BOLETA DE MUESTRA ES COPIA FIEL Y CORRECTA DE LOS PUESTOS, CANDIDATOS Y/O PROPOSICIONES QUE SERÁN SOMETIDAS A LA VOTACIÓN DURANTE LA ELECCIÓN CONSOLIDADA SERÁ CELEBRADA EN EL CONDADO KANE EL MARTES, 1 DE ABRIL DE 2025.

*John A. Cunningham*

**JOHN A. CUNNINGHAM**  
Kane County Clerk  
Secretario del Condado de Kane

# OFFICIAL BALLOT / Boleta Oficial

**ST CHARLES PARK DISTRICT  
FOR PARK COMMISSIONER TO SERVE A FULL 4-YEAR TERM**  
*DISTRITO DE PARQUES ST CHARLES  
PARA COMISIONADO DE PARQUES SERVIR UN  
TERMINO DE 4 ANOS*

Vote for (FOUR)  
*Votar por (CUATRO)*

Steven Ward

Craig Newman

Karrsten Goettel

Bob Carne

**SUGAR GROVE PARK DISTRICT  
FOR PARK COMMISSIONER TO SERVE A FULL 4-YEAR TERM**  
*DISTRITO DE PARQUES SUGAR GROVE  
PARA COMISIONADO DE PARQUES SERVIR UN  
TERMINO DE 4 ANOS*

Vote for (THREE)  
*Votar por (TRES)*

Ralph D. Voris IND

Chris Walker IND

-----  
Write-in *Escribir en*

**SUGAR GROVE PARK DISTRICT  
FOR PARK COMMISSIONER TO SERVE AN UNEXPIRED 2-YEAR TERM**  
*DISTRITO DE PARQUES SUGAR GROVE  
PARA COMISIONADO DE PARQUES SERVIR UN  
TERMINO INCONCLUSO DE 2 ANOS*

Vote for (ONE)  
*Votar por (UNO)*

No Candidate *No Hay Candidato*

-----  
Write-in *Escribir en*

**LIBRARY**  
BIBLIOTECA

**ALGONQUIN LIBRARY  
FOR LIBRARY TRUSTEES TO SERVE A FULL 6-YEAR TERM**  
*BIBLIOTECA DE ALGONQUIN  
PARA FIDUCIARIO BIBLIOTECARIO SERVIR UN  
TERMINO DE 6 ANOS*

Vote for (THREE)  
*Votar por (TRES)*

Serena Noelle Jamison

Peter J. Pelke II

Fatima M. Medrano-Sanchez

**ALGONQUIN LIBRARY  
FOR LIBRARY TRUSTEES TO SERVE AN UNEXPIRED 4-YEAR TERM**  
*BIBLIOTECA DE ALGONQUIN  
PARA FIDUCIARIO BIBLIOTECARIO SERVIR UN  
TERMINO DE 4 ANOS*

Vote for (ONE)  
*Votar por (UNO)*

James D. Johnson

**AURORA PUBLIC LIBRARY DISTRICT  
FOR LIBRARY TRUSTEES TO SERVE A FULL 6-YEAR TERM**  
*BIBLIOTECA DE AURORA  
PARA FIDUCIARIO BIBLIOTECARIO SERVIR UN  
TERMINO DE 6 ANOS*

Vote for (TWO)  
*Votar por (DOS)*

Ram Tyagi

Joseph Sanchez

Kevin O'Neill

Vincent Gaddis

Paul LaTour

**AURORA PUBLIC LIBRARY DISTRICT  
FOR LIBRARY TRUSTEES TO SERVE AN UNEXPIRED 4-YEAR TERM**  
*BIBLIOTECA DE AURORA  
PARA FIDUCIARIO BIBLIOTECARIO SERVIR UN  
TERMINO DE 4 ANOS*

Vote for (ONE)  
*Votar por (UNO)*

No Candidate *No Hay Candidato*

-----  
Write-in *Escribir en*

**BARRINGTON LIBRARY  
FOR LIBRARY TRUSTEES TO SERVE A FULL 6-YEAR TERM**  
*BIBLIOTECA DE BARRINGTON  
PARA FIDUCIARIO BIBLIOTECARIO SERVIR UN  
TERMINO DE 6 ANOS*

Vote for (THREE)  
*Votar por (TRES)*

Carrie F. Carr

Rachel H. Forsyth-Tuerck

Richard C. McCarthy

Joseph A. Bosnick

Erin Matta

**BATAVIA LIBRARY  
FOR LIBRARY TRUSTEES TO SERVE A FULL 4-YEAR TERM**  
*BIBLIOTECA DE BATAVIA PARA FIDUCIARIO  
BIBLIOTECARIO SERVIR UN TERMINO DE 4 ANOS*

Vote for (FOUR)  
*Votar por (CUATRO)*

Christy Ford

Christopher Lowe

Marianne Fasano

Kathryn L. Hubbard

Jennifer Sutton

**FOX RIVER VALLEY PUBLIC LIBRARY DISTRICT  
FOR LIBRARY TRUSTEES TO SERVE A FULL 4-YEAR TERM**  
*BIBLIOTECA DE FOX RIVER VALLEY  
PARA FIDUCIARIO BIBLIOTECARIO SERVIR UN  
TERMINO DE 4 ANOS*

Vote for (FOUR)  
*Votar por (CUATRO)*

Melissa Iwinski

Tara Finn

Matt Goyke

Dan Wisniewski

**ELLA JOHNSON LIBRARY  
FOR LIBRARY TRUSTEES TO SERVE A FULL 6-YEAR TERM**  
*BIBLIOTECA DE ELLA JOHNSON  
PARA FIDUCIARIO BIBLIOTECARIO SERVIR UN  
TERMINO DE 6 ANOS*

Vote for (TWO)  
*Votar por (DOS)*

Morgan Kolecke

**GAIL BORDEN LIBRARY  
FOR LIBRARY TRUSTEES TO SERVE A FULL 4-YEAR TERM**  
*BIBLIOTECA DE GAIL BORDEN  
PARA FIDUCIARIO BIBLIOTECARIO SERVIR UN  
TERMINO DE 4 ANOS*

Vote for (THREE)  
*Votar por (TRES)*

Randy Hopp

Hidayat Khan

Joy Symonds

Amy Prochot

Elisa Lara



I HEREBY CERTIFY THAT THIS SPECIMEN BALLOT IS A TRUE AND CORRECT COPY OF THE OFFICES, CANDIDATES AND/OR PROPOSITIONS TO BE VOTED IN THE CONSOLIDATED ELECTION TO BE HELD IN KANE COUNTY ON TUESDAY, APRIL 1, 2025. CERTIFICO POR LA PRESENTE QUE ESTA BOLETA DE MUESTRA ES COPIA FIEL Y CORRECTA DE LOS PUESTOS, CANDIDATOS Y/O PROPOSICIONES QUE SERÁN SOMETIDAS A LA VOTACIÓN DURANTE LA ELECCIÓN CONSOLIDADA SERÁ CELEBRADA EN EL CONDADO KANE EL MARTES, 1 DE ABRIL DE 2025.

*John A. Cunningham*  
**JOHN A. CUNNINGHAM**  
Kane County Clerk  
Secretario del Condado de Kane

# OFFICIAL BALLOT / Boleta Oficial

**GENEVA LIBRARY  
FOR LIBRARY TRUSTEES TO SERVE A FULL 4-YEAR TERM**  
BIBLIOTECA DE GENEVA  
PARA FIDUCIARIO BIBLIOTECARIO SERVIR UN TERMINO DE 4 ANOS

Vote for (THREE)  
Votar por (TRES)

Mark Adams

Arad Boxenbaum

Krista Joyce

**GENEVA LIBRARY  
FOR LIBRARY TRUSTEES TO SERVE AN UNEXPIRED 2-YEAR TERM**  
BIBLIOTECA DE GENEVA  
PARA FIDUCIARIO BIBLIOTECARIO SERVIR UN TERMINO INCONCLUSO DE 2 ANOS

Vote for (ONE)  
Votar por (UNO)

Paul Conterato

**HUNTLEY AREA LIBRARY  
FOR LIBRARY TRUSTEES TO SERVE A FULL 4-YEAR TERM**  
BIBLIOTECA DE HUNTLEY  
PARA FIDUCIARIO BIBLIOTECARIO SERVIR UN TERMINO DE 4 ANOS

Vote for (THREE)  
Votar por (TRES)

Sandy Domagalski

Stephanie Weil

Linda Benigno

**HUNTLEY AREA LIBRARY  
FOR LIBRARY TRUSTEES TO SERVE AN UNEXPIRED 2-YEAR TERM**  
BIBLIOTECA DE HUNTLEY  
PARA FIDUCIARIO BIBLIOTECARIO SERVIR UN TERMINO INCONCLUSO DE 2 ANOS

Vote for (THREE)  
Votar por (TRES)

Kathleen Kunde

**KANEVILLE LIBRARY  
FOR LIBRARY TRUSTEES TO SERVE A FULL 6-YEAR TERM**  
BIBLIOTECA DE KANEVILLE  
PARA FIDUCIARIO BIBLIOTECARIO SERVIR UN TERMINO DE 6 ANOS

Vote for (TWO)  
Votar por (DOS)

Carol Alfrey IND

Karen Flamand IND

**MAPLE PARK PUBLIC LIBRARY  
FOR LIBRARY TRUSTEES TO SERVE A FULL 4-YEAR TERM**  
BIBLIOTECA DE MAPLE PARK  
PARA FIDUCIARIO BIBLIOTECARIO SERVIR UN TERMINO DE 4 ANOS

Vote for (THREE)  
Votar por (TRES)

Patricia Lunardon

**MAPLE PARK PUBLIC LIBRARY  
FOR LIBRARY TRUSTEES TO SERVE AN UNEXPIRED 2-YEAR TERM**  
BIBLIOTECA DE MAPLE PARK  
PARA FIDUCIARIO BIBLIOTECARIO SERVIR UN TERMINO INCONCLUSO DE 2 ANOS

Vote for (FOUR)  
Votar por (CUATRO)

Anne Signorella

**OSWEGO LIBRARY  
FOR LIBRARY TRUSTEES TO SERVE A FULL 4-YEAR TERM**  
BIBLIOTECA DE OSWEGO  
PARA FIDUCIARIO BIBLIOTECARIO SERVIR UN TERMINO DE 4 ANOS

Vote for (FOUR)  
Votar por (CUATRO)

Lu Anne Harkins

Peter Wallers

Terry Tamblyn

James Connon

James T. "Jim" Marter

**ST CHARLES LIBRARY  
FOR LIBRARY TRUSTEES TO SERVE A FULL 6-YEAR TERM**  
BIBLIOTECA DE ST CHARLES  
PARA FIDUCIARIO BIBLIOTECARIO SERVIR UN TERMINO DE 6 ANOS

Vote for (TWO)  
Votar por (DOS)

Jane S. Shelton

Robert T. Gephart

Barbara Diepenbrock

Joseph Gay

**SUGAR GROVE LIBRARY  
FOR LIBRARY TRUSTEES TO SERVE A FULL 4-YEAR TERM**  
BIBLIOTECA DE SUGAR GROVE  
PARA FIDUCIARIO BIBLIOTECARIO SERVIR UN TERMINO DE 4 ANOS

Vote for (TWO)  
Votar por (DOS)

Glenda Peck

Marisa Richards

**TOWN & COUNTRY LIBRARY  
FOR LIBRARY TRUSTEES TO SERVE A FULL 4-YEAR TERM**  
BIBLIOTECA DE TOWN & COUNTRY  
PARA FIDUCIARIO BIBLIOTECARIO SERVIR UN TERMINO DE 4 ANOS

Vote for (THREE)  
Votar por (TRES)

Mary Kathryn Cherry

David R. Burroughs

Ann Marie Jumonville

**TOWN & COUNTRY LIBRARY  
FOR LIBRARY TRUSTEES TO SERVE AN UNEXPIRED 2-YEAR TERM**  
BIBLIOTECA DE TOWN & COUNTRY  
PARA FIDUCIARIO BIBLIOTECARIO SERVIR UN TERMINO INCONCLUSO DE 2 ANOS

Vote for (THREE)  
Votar por (TRES)

Brandi Krall

Christine Porter

Matthew L. Timko

**REGIONAL**  
REGIONAL

**Instruction to voter: Not more than 1 may serve from the same congressional township. TO SERVE A FULL TERM**  
Instruccion al votante: No mas de uno puede servir del mismo municipio congresional PARA SERVIR UN TERMINO COMPLETO

**DEKALB COUNTY  
FOR REGIONAL BOARD OF SCHOOL TRUSTEES TO SERVE A 6-YEAR TERM**  
CONDADO DE DEKALB  
PARA JUNTA REGIONAL DE FIDUCIARIOS ESCOLARES SERVIR UN TERMINO DE 6 ANOS

Vote for not more than (TWO)  
Votar por no mas de (DOS)

No Candidate/No Hay Candidato

**DEKALB COUNTY  
FOR REGIONAL BOARD OF SCHOOL TRUSTEES TO SERVE AN UNEXPIRED 4-YEAR TERM**  
CONDADO DE DEKALB  
PARA JUNTA REGIONAL DE FIDUCIARIOS ESCOLARES SERVIR UN TERMINO INCONCLUSO DE 4 ANOS

Vote for (TWO)  
Votar por (DOS)

No Candidate/No Hay Candidato

**DEKALB COUNTY  
FOR REGIONAL BOARD OF SCHOOL TRUSTEES TO SERVE AN UNEXPIRED 2-YEAR TERM**  
CONDADO DE DEKALB  
PARA JUNTA REGIONAL DE FIDUCIARIOS ESCOLARES SERVIR UN TERMINO INCONCLUSO DE 2 ANOS

Vote for (TWO)  
Votar por (DOS)

No Candidate/No Hay Candidato



I HEREBY CERTIFY THAT THIS SPECIMEN BALLOT IS A TRUE AND CORRECT COPY OF THE OFFICES, CANDIDATES AND/OR PROPOSITIONS TO BE VOTED IN THE CONSOLIDATED ELECTION TO BE HELD IN KANE COUNTY ON TUESDAY, APRIL 1, 2025. CERTIFICO POR LA PRESENTE QUE ESTA BOLETA DE MUESTRA ES COPIA FIEL Y CORRECTA DE LOS PUESTOS, CANDIDATOS Y/O PROPOSICIONES QUE SERÁN SOMETIDAS A LA VOTACIÓN DURANTE LA ELECCIÓN CONSOLIDADA SERÁ CELEBRADA EN EL CONDADO KANE EL MARTES, 1 DE ABRIL DE 2025.

*John A. Cunningham*

**JOHN A. CUNNINGHAM**  
Kane County Clerk  
Secretario del Condado de Kane



# OFFICIAL BALLOT / Boleta Oficial

**GRUNDY & KENDALL COUNTIES  
FOR REGIONAL BOARD OF SCHOOL TRUSTEES  
TO SERVE A 6-YEAR TERM**  
CONDADO DE GRUNDY & KENDALL  
PARA JUNTA REGIONAL DE FIDUCIARIOS  
ESCOLARES SERVIR UN TERMINO DE 6 ANOS

Vote for not more than (TWO)  
Votar por no mas de (DOS)

- Mary Lou Salato - Kendall County
- Cynthia Christensen - Grundy County

**Instruction to voter: Not more than 1 may serve from the same congressional township. TO SERVE A FULL TERM**  
Instruccion al votante: No mas de uno puede servir del mismo municipio congresional PARA SERVIR UN TERMINO COMPLETO

**KANE COUNTY  
FOR REGIONAL BOARD OF SCHOOL TRUSTEES  
TO SERVE A 6-YEAR TERM**  
CONDADO DE KANE  
PARA JUNTA REGIONAL DE FIDUCIARIOS  
ESCOLARES SERVIR UN TERMINO DE 6 ANOS

Vote for not more than (THREE)  
Votar por no mas de (TRES)

No Candidate No Hay Candidato

**Instruction to voter: Not more than 1 may serve from the same congressional township. TO SERVE A FULL TERM**  
Instruccion al votante: No mas de uno puede servir del mismo municipio congresional PARA SERVIR UN TERMINO COMPLETO

**LAKE COUNTY  
FOR REGIONAL BOARD OF SCHOOL TRUSTEES  
TO SERVE A 6-YEAR TERM**  
CONDADO DE LAKE  
PARA JUNTA REGIONAL DE FIDUCIARIOS  
ESCOLARES SERVIR UN TERMINO DE 6 ANOS

Vote for not more than (TWO)  
Votar por no mas de (DOS)

- Mary Morgan T44N R9E
- Clyde McLemore T46N R12E

**LAKE COUNTY  
FOR REGIONAL BOARD OF SCHOOL TRUSTEES  
TO SERVE AN UNEXPIRED 4-YEAR TERM**  
CONDADO DE LAKE  
PARA JUNTA REGIONAL DE FIDUCIARIOS  
ESCOLARES SERVIR UN TERMINO INCONCLUSO DE 4 ANOS

Vote for not more than (TWO)  
Votar por no mas de (DOS)

- Renita D. Davis T45N R10E

**LAKE COUNTY  
FOR REGIONAL BOARD OF SCHOOL TRUSTEES  
TO SERVE AN UNEXPIRED 2-YEAR TERM**  
CONDADO DE LAKE  
PARA JUNTA REGIONAL DE FIDUCIARIOS  
ESCOLARES SERVIR UN TERMINO INCONCLUSO DE 2 ANOS

Vote for not more than (ONE)  
Votar por no mas de (UNO)

No Candidate No Hay Candidato

**Instruction to voter: Not more than 1 may serve from the same congressional township. TO SERVE A FULL TERM**  
Instruccion al votante: No mas de uno puede servir del mismo municipio congresional PARA SERVIR UN TERMINO COMPLETO

**MC HENRY COUNTY  
FOR REGIONAL BOARD OF SCHOOL TRUSTEES  
TO SERVE A 6-YEAR TERM**  
CONDADO DE MCHENRY  
PARA JUNTA REGIONAL DE FIDUCIARIOS  
ESCOLARES SERVIR UN TERMINO DE 6 ANOS

Vote for not more than (TWO)  
Votar por no mas de (DOS)

No Candidate No Hay Candidato

**SCHOOL  
ESCUELA**

**ELGIN SCHOOL DISTRICT U-46  
FOR MEMBERS OF THE BOARD OF  
EDUCATION TO SERVE A FULL 4-YEAR TERM**  
DISTRITO ESCOLAR ELGIN U-46  
PARA MIEMBROS DE LA DIRECTIVA DE  
EDUCACION SERVIR UN TERMINO DE 4 ANOS

Vote for (THREE)  
Votar por (TRES)

- Melissa Owens
- Dawn M Martin
- Veronica Noland

**BATAVIA COMM UNIT SCHOOL DIST 101  
FOR MEMBERS OF THE BOARD OF ED. TO  
SERVE A FULL 4-YEAR TERM**  
DISTRITO ESCOLAR BATAVIA 101  
PARA MIEMBROS DE LA DIRECTIVA DE  
EDUCACION SERVIR UN TERMINO DE 4 ANOS

Vote for (FOUR)  
Votar por (CUATRO)

- Kristin Gehrels
- Katherine "Katy" Swiecicki
- Craig S. Meadows
- Aaron Kilburg
- Rose Mc Naul

**YORKVILLE SCHOOL DISTRICT 115  
FOR MEMBERS OF THE BOARD OF  
EDUCATION TO SERVE A FULL 4-YEAR TERM**  
DISTRITO ESCOLAR YORKVILLE 115  
PARA MIEMBROS DE LA DIRECTIVA DE  
EDUCACION SERVIR UN TERMINO DE 4 ANOS

Vote for (TWO)  
Votar por (DOS)

- Leslie Smogor (Bristol)
- Shawn A. Schumacher (Bristol)

Instructions to voter: Membership on the board of education is to consist of 4 members from the congressional township that has at least 75% but not more than 90% of the population, and 3 board members from the remaining congressional townships in the school district.  
On The Basis Of Existing Board Membership, Members May Be Elected In The Following Numbers From Each Congressional Township  
2 Board members shall be elected from the remaining congressional townships  
Instruccion al votante: La membresia en la directiva de educacion consistira en 4 miembros del municipio congresional que tenga por lo menos 75% pero no mas de 90% de la poblacion, y 3 miembros de los restantes municipio congesionales del distrito escolar.  
Sobre la base de la membresia existente de la Junta, los miembros pueden ser elegidos en los siguientes números de cada municipio del Congreso  
2 integrantes de la junta directiva seran elegidos de los restantes del municipio congresional

**YORKVILLE SCHOOL DISTRICT 115  
2 BD MEMBERS SHALL BE ELECTED FROM THE  
REMAINING CONG. TWSP**  
DISTRITO ESCOLAR YORKVILLE 115  
2 INTEGRANTES DE LA DIRECTIVA SERAN  
ELEGIDOS DE LOS RESTANTES DISTRITO  
CONGRESIONAL

Vote for (TWO)  
Votar por (DOS)

- Joseph Rand
- Julie Hart
- Michael Knoll
- Molly Gerke
- Jeanette Norman

**AURORA WEST SCHOOL DISTRICT 129  
FOR MEMBERS OF THE BOARD OF  
EDUCATION TO SERVE A FULL 4-YEAR TERM**  
DISTRITO ESCOLAR AURORA 129  
PARA MIEMBROS DE LA DIRECTIVA DE  
EDUCACION SERVIR UN TERMINO DE 4 ANOS

Vote for (THREE)  
Votar por (TRES)

- Austin Fitzcorbett
- Julie Stone
- Ana Cuevas
- Richard A. Kerns II
- Cesar A. Valdez
- Erika Garcia



I HEREBY CERTIFY THAT THIS SPECIMEN BALLOT IS A TRUE AND CORRECT COPY OF THE OFFICES, CANDIDATES AND/OR PROPOSITIONS TO BE VOTED IN THE CONSOLIDATED ELECTION TO BE HELD IN KANE COUNTY ON TUESDAY, APRIL 1, 2025. CERTIFICO POR LA PRESENTE QUE ESTA BOLETA DE MUESTRA ES COPIA FIEL Y CORRECTA DE LOS PUESTOS, CANDIDATOS Y/O PROPOSICIONES QUE SERÁN SOMETIDAS A LA VOTACIÓN DURANTE LA ELECCIÓN CONSOLIDADA SERÁ CELEBRADA EN EL CONDADO KANE EL MARTES, 1 DE ABRIL DE 2025.

**JOHN A. CUNNINGHAM**  
Kane County Clerk  
Secretario del Condado de Kane



# OFFICIAL BALLOT / Boleta Oficial

**AURORA EAST SCHOOL DISTRICT 131  
FOR MEMBERS OF THE BOARD OF  
EDUCATION TO SERVE A FULL 4-YEAR TERM**  
*DISTRITO ESCOLAR AURORA 131  
PARA MIEMBROS DE LA DIRECTIVA DE  
EDUCACION SERVIR UN TERMINO DE 4 ANOS*

Vote for (THREE)  
*Votar por (TRES)*

- Theodia Gillespie
- Annette Johnson
- Bruce Schubert
- Mayra S. Reyes
- April Fitzhugh
- Vannia Valencia
- Guy D. Bodie
- Lynda White
- Mary Fultz

**CONSOLIDATED SCHOOL DISTRICT 158  
FOR MEMBERS OF THE BOARD OF ED. TO  
SERVE A FULL 4-YEAR TERM**  
*DISTRITO ESCOLAR CONSOLIDATED 158  
PARA MIEMBROS DE LA DIRECTIVA DE  
EDUCACION SERVIR UN TERMINO DE 4 ANOS*

Vote for (FOUR)  
*Votar por (CUATRO)*

- Richard Bobby III
- Paul A. Troy
- Corine Burns
- Sean Cratty
- Andrew Martin
- Jim Hollich
- Cassie Khurana
- Melissa M. Maiorino

**CONSOLIDATED SCHOOL DISTRICT 158  
FOR MEMBERS OF THE BOARD OF ED. TO  
SERVE AN UNEXPIRED 2-YEAR TERM**  
*DISTRITO ESCOLAR CONSOLIDATED 158  
PARA MIEMBROS DE LA DIRECTIVA DE  
EDUCACION SERVIR UN TERMINO INCONCLUSO  
DE 2 ANOS*

Vote for (ONE)  
*Votar por (UNO)*

- Dana Wiley
- Andrew Fekete

**BARRINGTON SCHOOL DISTRICT 220  
FOR MEMBERS OF THE BOARD OF  
EDUCATION TO SERVE A FULL 4-YEAR TERM**  
*DISTRITO ESCOLAR BARRINGTON 220  
PARA MIEMBROS DE LA DIRECTIVA DE  
EDUCACION SERVIR UN TERMINO DE 4 ANOS*

Vote for (FOUR)  
*Votar por (CUATRO)*

- Steve Wang
- Katie Karam
- Erin Chan Ding
- Sandra Ficke-Bradford
- Harathi K. Srivastava
- Deanna Stern

Instructions to voter: Membership on the board of education is restricted to a maximum of 3 members from any congressional township. On The Basis Of Existing Board Membership, Members May Be Elected In The Following Numbers From Each Congressional Township

Not More Than 2 May Be Elected From Township 43N Range 8E Algonquin  
Not More Than 3 May Be Elected From Township 42N Range 9E Barrington  
Not More Than 3 May Be Elected From Township 41N Range 6E Burlington  
Not More Than 2 May Be Elected From Township 42N Range 8E Dundee  
Not More Than 3 May Be Elected From Township 41N Range 8E Elgin  
Not More Than 3 May Be Elected From Township 42N Range 5E Genoa  
Not More Than 3 May Be Elected From Township 42N Range 6E Hampshire  
Not More Than 3 May Be Elected From Township 41N Range 7E Plato  
Not More Than 2 May Be Elected From Township 42N Range 7E Rutland

Instruccion al votante: Membresia en la directiva de educacion esta restringida a un maximo de 3 miembros de cualquier municipio congresional. Sobre la base de la membresia existente de la junta, los miembros pueden ser elegidos en los siguientes números de cada municipio del Congreso

No Mas De 2 Pueden Ser Elegidos De Township 43N Range 8E Algonquin  
No Mas De 3 Pueden Ser Elegidos De Township 42N Range 9E Barrington  
No Mas De 3 Pueden Ser Elegidos De Township 41N Range 6E Burlington  
No Mas De 2 Pueden Ser Elegidos De Township 42N Range 8E Dundee  
No Mas De 3 Pueden Ser Elegidos De Township 41N Range 8E Elgin  
No Mas De 3 Pueden Ser Elegidos De Township 42N Range 5E Genoa  
No Mas De 3 Pueden Ser Elegidos De Township 42N Range 6E Hampshire  
No Mas De 3 Pueden Ser Elegidos De Township 41N Range 7E Plato  
No Mas De 2 Pueden Ser Elegidos De Township 42N Range 7E Rutland

**COMMUNITY SCHOOL DISTRICT 300  
FOR MEMBERS OF THE BOARD OF  
EDUCATION TO SERVE A FULL 4-YEAR TERM**  
*DISTRITO ESCOLAR COMMUNITY 300  
PARA MIEMBROS DE LA DIRECTIVA DE  
EDUCACION SERVIR UN TERMINO DE 4 ANOS*

Vote for (THREE)  
*Votar por (TRES)*

- Christine Birkett (Dundee)
- Emmanuel Thomas (Dundee)
- Patrick Malia, Jr (Dundee)
- Alisa "Lisa" Lindmark (Hampshire)
- Aaron Kelly (Hampshire)
- Gianena Winkler (Rutland)

**COMMUNITY SCHOOL DISTRICT 300  
FOR MEMBERS OF THE BOARD OF ED. TO  
SERVE AN UNEXPIRED 2-YEAR TERM**  
*DISTRITO ESCOLAR COMMUNITY 300  
PARA MIEMBROS DE LA DIRECTIVA DE  
EDUCACION SERVIR UN TERMINO INCONCLUSO  
DE 2 ANOS*

Vote for (ONE)  
*Votar por (UNO)*

- Leslie LaMarca

Instructions to voter: Membership on the board of education is restricted to a maximum of 3 members from any congressional township. On The Basis Of Existing Board Membership, Members May Be Elected In The Following Numbers From Each Congressional Township

Not More Than 3 May Be Elected From Township 41N Range 6E Burlington  
Not More Than 2 May Be Elected From Township 40N Range 7E Campton  
Not More Than 2 May Be Elected From Township 41N Range 8E Elgin  
Not More Than 2 May Be Elected From Township 41N Range 7E Plato

Instruccion al votante: Membresia en la directiva de educacion esta restringida a un maximo de 3 miembros de cualquier municipio congresional. Sobre la base de la membresia existente de la junta, los miembros pueden ser elegidos en los siguientes números de cada municipio del Congreso

No Mas De 3 Pueden Ser Elegidos De Township 41N Range 6E Burlington  
No Mas De 2 Pueden Ser Elegidos De Township 40N Range 7E Campton  
No Mas De 2 Pueden Ser Elegidos De Township 41N Range 8E Elgin  
No Mas De 2 Pueden Ser Elegidos De Township 41N Range 7E Plato



I HEREBY CERTIFY THAT THIS SPECIMEN BALLOT IS A TRUE AND CORRECT COPY OF THE OFFICES, CANDIDATES AND/OR PROPOSITIONS TO BE VOTED IN THE CONSOLIDATED ELECTION TO BE HELD IN KANE COUNTY ON TUESDAY, APRIL 1, 2025. CERTIFICO POR LA PRESENTE QUE ESTA BOLETA DE MUESTRA ES COPIA FIEL Y CORRECTA DE LOS PUESTOS, CANDIDATOS Y/O PROPOSICIONES QUE SERÁN SOMETIDAS A LA VOTACIÓN DURANTE LA ELECCIÓN CONSOLIDADA SERÁ CELEBRADA EN EL CONDADO KANE EL MARTES, 1 DE ABRIL DE 2025.

*John A. Cunningham*

**JOHN A. CUNNINGHAM**  
Kane County Clerk  
Secretario del Condado de Kane

# OFFICIAL BALLOT / Boleta Oficial

**CENTRAL SCHOOL DISTRICT 301  
FOR MEMBERS OF THE BOARD OF  
EDUCATION TO SERVE A FULL 4-YEAR TERM**  
*DISTRITO ESCOLAR CENTRAL 301  
PARA MIEMBROS DE LA DIRECTIVA DE  
EDUCACION SERVIR UN TERMINO DE 4 ANOS*

Vote for (THREE)  
*Votar por (TRES)*

- Ryan Wasson (Burlington)
- Dornetria Hemphill (Elgin)
- Scott Mrkvicka (Elgin)
- Marc A. Falk (Plato)
- PK Parekh (Plato)
- Roumiana Mc Mahon (Plato)
- Micheline Welch (Plato)
- Graciela Martinez (Plato)

**CENTRAL SCHOOL DISTRICT 301  
FOR MEMBERS OF THE BOARD OF  
EDUCATION TO SERVE AN UNEXPIRED 2-YEAR  
TERM**  
*DISTRITO ESCOLAR CENTRAL 301  
PARA MIEMBROS DE LA DIRECTIVA DE  
EDUCACION SERVIR UN TERMINO INCONCLUSO  
DE 2 ANOS*

Vote for (ONE)  
*Votar por (UNO)*

- Andrew Dogan (Elgin)
- Junaid "J" Afeef (Plato)

Instructions to voter: Membership on the board of education is restricted to a maximum of 3 members from any congressional township. On The Basis Of Existing Board Membership, Members May Be Elected In The Following Numbers From Each Congressional Township

- Not More Than 1 May Be Elected From Township 39N Range 7E Blackberry
- Not More Than 2 May Be Elected From Township 40N Range 7E Campton
- Not More Than 3 May Be Elected From Township 39N Range 6E Kaneville
- Not More Than 2 May Be Elected From Township 38N Range 7E Sugar Grove

Instruccion al votante: Membresia en la directiva de educacion esta restringida a un maximo de 3 miembros de cualquier municipio congresional. Sobre la base de la membresia existente de la junta, los miembros pueden ser elegidos en los siguientes números de cada municipio del Congreso

- No Mas De 1 Pueden Ser Elegidos De Township 39N Range 7E Blackberry
- No Mas De 2 Pueden Ser Elegidos De Township 40N Range 7E Campton
- No Mas De 3 Pueden Ser Elegidos De Township 39N Range 6E Kaneville
- No Mas De 2 Pueden Ser Elegidos De Township 38N Range 7E Sugar Grove



**I HEREBY CERTIFY THAT THIS SPECIMEN BALLOT IS A TRUE AND CORRECT COPY OF THE OFFICES, CANDIDATES AND/OR PROPOSITIONS TO BE VOTED IN THE CONSOLIDATED ELECTION TO BE HELD IN KANE COUNTY ON TUESDAY, APRIL 1, 2025. CERTIFICO POR LA PRESENTE QUE ESTA BOLETA DE MUESTRA ES COPIA FIEL Y CORRECTA DE LOS PUESTOS, CANDIDATOS Y/O PROPOSICIONES QUE SERÁN SOMETIDAS A LA VOTACIÓN DURANTE LA ELECCIÓN CONSOLIDADA SERÁ CELEBRADA EN EL CONDADO KANE EL MARTES, 1 DE ABRIL DE 2025.**

**OSWEGO SCHOOL DISTRICT 308  
FOR MEMBERS OF THE BOARD OF  
EDUCATION TO SERVE A FULL 4-YEAR TERM**  
*DISTRITO ESCOLAR OSWEGO 308  
PARA MIEMBROS DE LA DIRECTIVA DE  
EDUCACION SERVIR UN TERMINO DE 4 ANOS*

Vote for not more than (FOUR)  
*Votar por no mas de (CUATRO)*

- Katie Heiden
- Rovel Pollock
- Erika Sieh
- James T. "Jim" Marter
- Kari Foulk
- Dawn Marquis
- Brandi Robinson
- Heather Martin

Instructions to voter: Membership on the board of education is restricted to a maximum of 3 members from any congressional township. On The Basis Of Existing Board Membership, Members May Be Elected In The Following Numbers From Each Congressional Township

- Not More Than 3 May Be Elected From Township 41N Range 6E Burlington
- Not More Than 2 May Be Elected From Township 40N Range 5E Cortland
- Not More Than 3 May Be Elected From Township 40N Range 4E DeKalb
- Not More Than 3 May Be Elected From Township 41N Range 4E Mayfield
- Not More Than 2 May Be Elected From Township 41N Range 3E South Grove
- Not More Than 2 May Be Elected From Township 41N Range 5E Sycamore
- Not More Than 3 May Be Elected From Township 40N Range 6E Virgil

Instruccion al votante: Membresia en la directiva de educacion esta restringida a un maximo de 3 miembros de cualquier municipio congresional. Sobre la base de la membresia existente de la junta, los miembros pueden ser elegidos en los siguientes números de cada municipio del Congreso

- No Mas De 3 Pueden Ser Elegidos De Township 41N Range 6E Burlington
- No Mas De 2 Pueden Ser Elegidos De Township 40N Range 5E Cortland
- No Mas De 3 Pueden Ser Elegidos De Township 40N Range 4E DeKalb
- No Mas De 3 Pueden Ser Elegidos De Township 41N Range 4E Mayfield
- No Mas De 2 Pueden Ser Elegidos De Township 41N Range 3E South Grove
- No Mas De 2 Pueden Ser Elegidos De Township 41N Range 5E Sycamore
- No Mas De 3 Pueden Ser Elegidos De Township 40N Range 6E Virgil

**KANELAND SCHOOL DISTRICT 302  
FOR MEMBERS OF THE BOARD OF  
EDUCATION TO SERVE A FULL 4-YEAR TERM**  
*DISTRITO ESCOLAR KANELAND 302  
PARA MIEMBROS DE LA DIRECTIVA DE  
EDUCACION SERVIR UN TERMINO DE 4 ANOS*

Vote for (THREE)  
*Votar por (TRES)*

- Addam Gonzales (Campton)
- Jennifer Simmons (Campton)
- Scott Stalcup (Sugar Grove)
- Aaron Lawler (Sugar Grove)

**GENEVA SCHOOL DISTRICT 304  
FOR MEMBERS OF THE BOARD OF  
EDUCATION TO SERVE A FULL 4-YEAR TERM**  
*DISTRITO ESCOLAR GENEVA 304  
PARA MIEMBROS DE LA DIRECTIVA DE  
EDUCACION SERVIR UN TERMINO DE 4 ANOS*

Vote for (FOUR)  
*Votar por (CUATRO)*

- Stephanie Bellino
- Dan Choi
- Jacqueline Forbes
- Willard C. Hooks, Jr.

**ST CHARLES SCHOOL DISTRICT 303  
FOR MEMBERS OF THE BOARD OF ED. TO  
SERVE A FULL  
4-YEAR TERM**

*DISTRITO ESCOLAR ST CHARLES 303  
PARA MIEMBROS DE LA DIRECTIVA DE  
EDUCACION SERVIR UN TERMINO DE 4 ANOS*

Vote for (FOUR)  
*Votar por (CUATRO)*

- Heidi J Fairgrieve
- Aaron White
- Jenna Hancock
- Elias Palacios
- Kimberly Rich
- Thomas Lentz
- Antonietta Berton-Nicklaus
- Katherine (Kate) Bell

**JOHN A. CUNNINGHAM**  
Kane County Clerk  
Secretario del Condado de Kane



# OFFICIAL BALLOT / Boleta Oficial

**SYCAMORE SCHOOL DISTRICT 427  
FOR MEMBERS OF THE BOARD OF  
EDUCATION TO SERVE A FULL 4-YEAR TERM**  
*DISTRITO ESCOLAR SYCAMORE 427  
PARA MIEMBROS DE LA DIRECTIVA DE  
EDUCACION SERVIR UN TERMINO DE 4 ANOS*

Vote for not more than (FOUR)  
*Votar por no mas de (CUATRO)*

Michael Devito (Sycamore)

Jonathan "Cole" Regnery (Sycamore)

Eric Jones (Sycamore)

Heather Tomlinson (Cortland)

Alan Zantout (Cortland)

**SYCAMORE SCHOOL DISTRICT 427  
FOR MEMBERS OF THE BOARD OF  
EDUCATION TO SERVE AN UNEXPIRED 2-YEAR  
TERM**  
*DISTRITO ESCOLAR SYCAMORE 427  
PARA MIEMBROS DE LA DIRECTIVA DE  
EDUCACION SERVIR UN TERMINO INCONCLUSO  
DE 2 ANOS*

Vote for (ONE)  
*Votar por (UNO)*

Christian Cople (Cortland)

Instructions to voter: Membership on the board of education is restricted to a maximum of 3 members from any congressional township.  
On The Basis Of Existing Board Membership, Members May Be Elected In The Following Numbers From Each Congressional Township

Not More Than 3 May Be Elected From Township 39N Range 4E Afton  
Not More Than 3 May Be Elected From Township 38N Range 6E Big Rock  
Not More Than 3 May Be Elected From Township 37N Range 6E Little Rock  
Not More Than 3 May Be Elected From Township 39N Range 5E Pierce  
Not More Than 1 May Be Elected From Township 38N Range 5E Squaw Grove  
Not More Than 3 May Be Elected From Township 38N Range 7E Sugar Grove

Instruccion al votante: Membresia en la directiva de educacion esta restringida a un maximo de 3 miembros de cualquier municipio congressional.  
Sobre la base de la membresia existente de la junta, los miembros pueden ser elegidos en los siguientes números de cada municipio del Congreso

No Mas De 3 Pueden Ser Elegidos De Township 39N Range 4E Afton  
No Mas De 3 Pueden Ser Elegidos De Township 38N Range 6E Big Rock  
No Mas De 3 Pueden Ser Elegidos De Township 37N Range 6E Little Rock  
No Mas De 3 Pueden Ser Elegidos De Township 39N Range 5E Pierce  
No Mas De 1 Pueden Ser Elegidos De Township 38N Range 5E Squaw Grove  
No Mas De 3 Pueden Ser Elegidos De Township 38N Range 7E Sugar Grove

**HINCKLEY-BIG ROCK DISTRICT 429  
FOR MEMBERS OF THE BOARD OF ED. TO  
SERVE A FULL  
4-YEAR TERM**  
*DISTRITO ESCOLAR HINCKLEY-BIG ROCK 429  
PARA MIEMBROS DE LA DIRECTIVA DE  
EDUCACION SERVIR UN TERMINO DE 4 ANOS*

Vote for not more than (FOUR)  
*Votar por no mas de (CUATRO)*

Donald Jack Haines (Squaw Grove)

Greg Pritchard (Pierce)

Abigail Barrett (Pierce)

Darrin Gengler (Big Rock)

**HINCKLEY-BIG ROCK DISTRICT 429  
FOR MEMBERS OF THE BOARD OF ED. TO  
SERVE AN UNEXPIRED 2-YEAR TERM**  
*DISTRITO ESCOLAR HINCKLEY-BIG ROCK 429  
PARA MIEMBROS DE LA DIRECTIVA DE  
EDUCACION SERVIR UN TERMINO INCONCLUSO  
DE 2 ANOS*

Vote for (ONE)  
*Votar por (UNO)*

No Candidate *No Hay Candidato*

**COLLEGE  
COLEGIO**

**ELGIN COMMUNITY COLLEGE 509  
FOR TRUSTEES OF THE COMM. COLLEGE  
DISTRICT TO SERVE A 6-YEAR TERM**  
*COLEGIO COMUNITARIO ELGIN 509  
PARA FIDUCIARIOS DEL DISTRITO DE COLEGIO  
COMUNITARIO SERVIR UN TERMINO DE 6 ANOS*

Vote for (TWO)  
*Votar por (DOS)*

Shane Nowak

Melissa Barbosa-Guzman

James George Allen, Jr.

**HARPER COMMUNITY COLLEGE 512  
FOR TRUSTEES OF THE COMM. COLLEGE TO  
SERVE A 6-YEAR TERM**  
*COLEGIO COMUNITARIO HARPER 512  
PARA FIDUCIARIOS DEL DISTRITO DE COLEGIO  
COMUNITARIO SERVIR UN TERMINO DE 6 ANOS*

Vote for not more than (TWO)  
*Votar por no mas de (DOS)*

Herb Johnson

Eric W. Knox

James Meyer

**KISHWAUKEE COLLEGE 523  
FOR TRUSTEES TO SERVE A 6-YEAR TERM**  
*COLEGIO COMUNITARIO KISHWAUKEE 523  
PARA FIDUCIARIOS DEL DISTRITO DE COLEGIO  
COMUNITARIO SERVIR UN TERMINO DE 6 ANOS*

Vote for (TWO)  
*Votar por (DOS)*

David Lilja

Catherine Hopkins

**MC HENRY COUNTY COLLEGE 528  
FOR TRUSTEES OF THE COMM. COLLEGE  
DISTRICT TO SERVE A 6-YEAR TERM**  
*COLEGIO COMUNITARIO MC HENRY 528  
PARA FIDUCIARIOS DEL DISTRITO DE COLEGIO  
COMUNITARIO SERVIR UN TERMINO DE 6 ANOS*

Vote for (THREE)  
*Votar por (TRES)*

Linnea Kooistra

Tess Reinhard

Tom Allen

**WAUBONSEE COMMUNITY COLLEGE 516  
FOR TRUSTEES TO SERVE A 6-YEAR TERM**  
*COLEGIO COMUNITARIO WAUBONSEE 516  
PARA FIDUCIARIOS DEL DISTRITO DE COLEGIO  
COMUNITARIO SERVIR UN TERMINO DE 6 ANOS*

Vote for not more than (TWO)  
*Votar por no mas de (DOS)*

Daniel Jaquez

Greg Dobbins

Tina Medlin Willson

**WAUBONSEE COMMUNITY COLLEGE 516  
FOR TRUSTEES TO SERVE AN UN-EXPIRED 4-  
YEAR TERM**  
*COLEGIO COMUNITARIO WAUBONSEE 516  
PARA FIDUCIARIOS DEL DISTRITO DE COLEGIO  
COMUNITARIO SERVIR UN TERMINO  
INCONCLUSO DE 4 ANOS*

Vote for not more than (ONE)  
*Votar por no mas de (UNO)*

Richard "Rick" Guzman

**FIRE  
INCENDIOS**

**ALGONQUIN LAKE IN THE HILLS FIRE  
DISTRICT  
FOR FIRE TRUSTEES TO SERVE A FULL 6-YEAR  
TERM**  
*DISTRITO CONTRA INCENDIOS DE ALGONQUIN  
LAKE IN THE HILLS  
PARA FIDUCIARIOS CONTRA INCENDIOS SERVIR  
UN TERMINO DE 6 ANOS*

Vote for (TWO)  
*Votar por (DOS)*

Tim Moss

Rick Naatz

**CARPENTERSVILLE & COUNTRYSIDE FIRE  
DISTRICT  
FOR FIRE TRUSTEES TO SERVE A FULL 6-YEAR  
TERM**  
*DISTRITO CONTRA INCENDIOS DE  
CARPENTERSVILLE & COUNTRYSIDE  
PARA FIDUCIARIOS CONTRA INCENDIOS SERVIR  
UN TERMINO DE 6 ANOS*

Vote for (ONE)  
*Votar por (UNO)*

Autumn L. Sheppard



I HEREBY CERTIFY THAT THIS SPECIMEN BALLOT IS A TRUE AND CORRECT COPY OF THE OFFICES, CANDIDATES AND/OR PROPOSITIONS TO BE VOTED IN THE CONSOLIDATED ELECTION TO BE HELD IN KANE COUNTY ON TUESDAY, APRIL 1, 2025. CERTIFICO POR LA PRESENTE QUE ESTA BOLETA DE MUESTRA ES COPIA FIEL Y CORRECTA DE LOS PUESTOS, CANDIDATOS Y/O PROPOSICIONES QUE SERÁN SOMETIDAS A LA VOTACIÓN DURANTE LA ELECCIÓN CONSOLIDADA SERÁ CELEBRADA EN EL CONDADO KANE EL MARTES, 1 DE ABRIL DE 2025.

*John A. Cunningham*

**JOHN A. CUNNINGHAM**  
Kane County Clerk  
Secretario del Condado de Kane

# OFFICIAL BALLOT / Boleta Oficial

**EAST DUNDEE & COUNTRYSIDE FIRE DISTRICT  
FOR FIRE TRUSTEES TO SERVE A FULL 6-YEAR TERM**  
*DISTRITO CONTRA INCENDIOS DE EAST DUNDEE & COUNTRYSIDE  
 PARA FIDUCIARIOS CONTRA INCENDIOS SERVIR UN TERMINO DE 6 ANOS*

Vote for (ONE)  
 Votar por (UNO)

Mark Guth Jr

**ELBURN & COUNTRYSIDE FIRE PROTECTION DISTRICT  
FOR FIRE TRUSTEES TO SERVE A FULL 6-YEAR TERM**  
*DISTRITO CONTRA INCENDIOS DE ELBURN & COUNTRYSIDE  
 PARA FIDUCIARIOS CONTRA INCENDIOS SERVIR UN TERMINO DE 6 ANOS*

Vote for (TWO)  
 Votar por (DOS)

Jeffrey S. Armesy

Lisa A. Engberg

**FOX RIVER & COUNTRYSIDE FIRE/RESCUE DISTRICT  
FOR FIRE TRUSTEES TO SERVE A FULL 6-YEAR TERM**  
*DISTRITO CONTRA INCENDIOS DE FOX RIVER & COUNTRYSIDE  
 PARA FIDUCIARIOS CONTRA INCENDIOS SERVIR UN TERMINO DE 6 ANOS*

Vote for (ONE)  
 Votar por (UNO)

Jim Gaffney

**FOX RIVER & COUNTRYSIDE FIRE/RESCUE DISTRICT  
FOR FIRE TRUSTEES TO SERVE AN UNEXPIRED 4-YEAR TERM**  
*DISTRITO CONTRA INCENDIOS DE FOX RIVER & COUNTRYSIDE  
 PARA FIDUCIARIOS CONTRA INCENDIOS SERVIR UN TERMINO INCONCLUSO DE 4 ANOS*

Vote for (ONE)  
 Votar por (UNO)

Thomas G. Kennedy

**HAMPSHIRE FIRE DISTRICT  
FOR FIRE TRUSTEES TO SERVE A FULL 6-YEAR TERM**  
*DISTRITO CONTRA INCENDIOS DE HAMPSHIRE  
 PARA FIDUCIARIOS CONTRA INCENDIOS SERVIR UN TERMINO DE 6 ANOS*

Vote for (TWO)  
 Votar por (DOS)

Steven L Gustafson

Edward "Eddie" Saunders

**HAMPSHIRE FIRE DISTRICT  
FOR FIRE TRUSTEES TO SERVE AN UNEXPIRED 2-YEAR TERM**  
*DISTRITO CONTRA INCENDIOS DE HAMPSHIRE  
 PARA FIDUCIARIOS CONTRA INCENDIOS SERVIR UN TERMINO INCONCLUSO DE 2 ANOS*

Vote for (ONE)  
 Votar por (UNO)

William K Misner

**HUNTLEY FIRE DISTRICT  
FOR FIRE TRUSTEES TO SERVE A FULL 6-YEAR TERM**  
*DISTRITO CONTRA INCENDIOS DE HUNTLEY  
 PARA FIDUCIARIOS CONTRA INCENDIOS SERVIR UN TERMINO DE 6 ANOS*

Vote for (ONE)  
 Votar por (UNO)

Lucas Palermo

**HUNTLEY FIRE DISTRICT  
FOR FIRE TRUSTEES TO SERVE AN UNEXPIRED 4-YEAR TERM**  
*DISTRITO CONTRA INCENDIOS DE HUNTLEY  
 PARA FIDUCIARIOS CONTRA INCENDIOS SERVIR UN TERMINO INCONCLUSO DE 4 ANOS*

Vote for (ONE)  
 Votar por (UNO)

Brian Fluhler

**NORTH AURORA FIRE DISTRICT  
FOR FIRE TRUSTEES TO SERVE A FULL 6-YEAR TERM**  
*DISTRITO CONTRA INCENDIOS DE NORTH AURORA  
 PARA FIDUCIARIOS CONTRA INCENDIOS SERVIR UN TERMINO DE 6 ANOS*

Vote for (TWO)  
 Votar por (DOS)

Richard Brackett

Gerry Freese

**PINGREE GROVE & CSIDE FIRE DISTRICT  
FOR FIRE TRUSTEES TO SERVE A FULL 6-YEAR TERM**  
*DISTRITO CONTRA INCENDIOS DE PINGREE GROVE & CSIDE  
 PARA FIDUCIARIOS CONTRA INCENDIOS SERVIR UN TERMINO DE 6 ANOS*

Vote for (TWO)  
 Votar por (DOS)

Thomas Hite

Matthew Clark

**RUTLAND-DUNDEE FIRE DISTRICT  
FOR FIRE TRUSTEES TO SERVE A FULL 6-YEAR TERM**  
*DISTRITO CONTRA INCENDIOS DE RUTLAND-DUNDEE  
 PARA FIDUCIARIOS CONTRA INCENDIOS SERVIR UN TERMINO DE 6 ANOS*

Vote for (ONE)  
 Votar por (UNO)

Rollyn L. Anderson

**SUGAR GROVE FIRE DISTRICT  
FOR FIRE TRUSTEES TO SERVE A FULL 6-YEAR TERM**  
*DISTRITO CONTRA INCENDIOS DE SUGAR GROVE  
 PARA FIDUCIARIOS CONTRA INCENDIOS SERVIR UN TERMINO DE 6 ANOS*

Vote for (TWO)  
 Votar por (DOS)

Timothy Cicero

Susan Cuomo

David Blankenship

**FOR FOX METRO WATER REC TRUSTEE-DISTRICT 4  
PARA FOX METRO DISTRITO DE RECUPERACION DE AGUA FIDUCIARIO 4**

Vote for (ONE)  
 Votar por (UNO)

Randall H. Brown

**PROPOSITION  
PROPUESTA**

**(KANE COUNTY) IMPOSE AN INCREASE ON ITS SHARE OF LOCAL SALES TAXES BY 0.75% (CONDADO DE KANE) IMPONER UN AUMENTO EN SU PARTICIPACIÓN EN LOS IMPUESTOS LOCALES SOBRE LAS VENTAS EN UN 0.75%**

To pay for public safety purposes, shall the County of Kane be authorized to impose an increase on its share of local sales taxes by 0.75%?

This would mean that a consumer would pay an additional \$0.75 in sales tax for every \$100 of tangible personal property bought at retail. Debería el Condado de Kane ser autorizado a imponer un aumento de 0.75% en su porcentaje de los impuestos locales sobre las ventas para el pago de fines de seguridad publica?

Esto significaría que el consumidor pagaría un adicional de \$0.75 en impuesto sobre la venta por cada \$100 de bienes personales tangibles comprados al por menor.

Yes Si

No No

**(VILLAGE OF SUGAR GROVE) DEVELOPMENT OF THE GROVE BE IMMEDIATELY REVERSED (ALDEA DE SUGAR GROVE) EL DESARROLLO "THE GROVE" SERA INMEDIATAMENTE REVERTIDO**

Should the Village of Sugar Groves approval of The Grove, a development project by Sugar Grove LLC \Crown Community Development, located near Interstate 88 and Illinois Route 47, be immediately reversed using all necessary and lawful measures? Debería revocarse de manera inmediata, utilizando todas las medidas legales y necesarias, la aprobación que la Aldea de Sugar Grove le otorgó al proyecto de desarrollo The Grove del Sugar Grove LLC\Crown Community Development, ubicado cerca de la Interestatal 88 y la Ruta 47 de Illinois?

Yes Si

No No



I HEREBY CERTIFY THAT THIS SPECIMEN BALLOT IS A TRUE AND CORRECT COPY OF THE OFFICES, CANDIDATES AND/OR PROPOSITIONS TO BE VOTED IN THE CONSOLIDATED ELECTION TO BE HELD IN KANE COUNTY ON TUESDAY, APRIL 1, 2025. CERTIFICO POR LA PRESENTE QUE ESTA BOLETA DE MUESTRA ES COPIA FIEL Y CORRECTA DE LOS PUESTOS, CANDIDATOS Y/O PROPOSICIONES QUE SERÁN SOMETIDAS A LA VOTACIÓN DURANTE LA ELECCIÓN CONSOLIDADA SERÁ CELEBRADA EN EL CONDADO KANE EL MARTES, 1 DE ABRIL DE 2025.

**JOHN A. CUNNINGHAM**  
 Kane County Clerk  
 Secretario del Condado de Kane



# OFFICIAL BALLOT / Boleta Oficial

**(CAMPTON TOWNSHIP) SHALL CAMPTON TOWNSHIP ISSUE BONDS**  
(MUNICIPIO DE CAMPTON) DEBERA EL MUNICIPIO DE CAMPTON EMITIR BONOS

Shall Campton Township issue bonds to finance the acquisition, maintenance, development, rehabilitation and renovation of open space lands for open space purposes as provided by the Township Open Space Article of the Township Code and levy and collect property taxes, in excess of any other tax authorized to be levied by the township, sufficient to meet the principal and interest bonds as they mature, but not in an amount in excess of \$17.2 million?

Esta de acuerdo con que el municipio de Campton emita bonos para financiar la adquisición, el mantenimiento, el desarrollo, la rehabilitación y la renovación de terrenos de espacio abierto para fines de espacios abiertos según lo dispuesto por el Artículo de Espacios Abiertos Municipales del Código Municipal, y con que imponga y recaude impuestos sobre bienes inmuebles, además de cualquier otro impuesto que el municipio esté facultado a recaudar, suficientes para cumplir con los bonos de capital e intereses a medida que lleguen a su vencimiento, pero por un monto máximo de \$17.2 millones?

Yes *Si*

No *No*

**(CAMPTON TOWNSHIP) SHALL THE LIMITING RATE FOR THE CAMPTON TOWNSHIP CEMETERY ASSOCIATION BE INCREASED**  
(MUNICIPIO DE CAMPTON) SE DEBERÁ AUMENTAR LA ASOCIACIÓN DEL CEMENTERIO DEL MUNICIPIO DE CAMPTON EN LA CANTIDAD DE .0073

Shall the limiting rate under the Property Tax Extension Limitation Law for the Campton Township Cemetery Association be increased in the amount of .0073?

This means the taxpayer would pay an additional \$7.30 per \$100,000 net taxable value.

Debería aumentarse la tasa límite bajo la Ley de Limitación de la Extensión del Impuesto a la Propiedad para la Asociación de Cementerios del Municipio de Campton en la cantidad de .0073?

Esto significa que el contribuyente pagaría \$7.30 adicionales por cada \$100,000 de valor neto imponible.

Yes *Si*

No *No*

**(ELLA JOHNSON LIBRARY) PROPOSITION TO ISSUE \$15,000,000 LIBRARY BONDS**  
(BIBLIOTECA DE ELLA JOHNSON) PROPUESTA PARA EMITIR BONOS POR \$15,000,000 PARA LA BIBLIOTECA

Shall bonds of the Ella Johnson Memorial Public Library District, Kane County, Illinois, in the amount of \$15,000,000 be issued for the purpose of erecting a new library building located in Pingree Grove, Illinois, and furnishing necessary equipment and acquiring electronic data storage and retrieval facilities in connection therewith?

Aprueba usted la emisión de bonos del Distrito de la Biblioteca Pública Ella Johnson Memorial, Condado de Kane, Illinois, por un monto de \$15,000,000 destinados a construir un nuevo edificio para la biblioteca en Pingree Grove, Illinois, equiparlo con el mobiliario necesario y adquirir sistemas de almacenamiento y recuperación de datos electrónicos relacionados con el proyecto?

Yes *Si*

No *No*

**(KANELAND 302) PROPOSITION TO ISSUE \$140,274,000 SCHOOL BUILDING BONDS**  
(KANELAND 302) PROPUESTA DE EMISIÓN DE BONOS DE CONSTRUCCIÓN DE ESCUELAS POR VALOR DE \$140,274,000

Shall the Board of Education of Kaneland Community Unit School District Number 302, Kane and DeKalb Counties, Illinois, alter, repair and equip school buildings and improve the sites thereof, including but not limited to repairing and replacing infrastructure and mechanical systems; replacing roofs and updating playgrounds at the elementary school buildings; improving learning spaces, restrooms, the main entrance and athletic facilities at the Kaneland High School Building and building and equipping a fieldhouse addition thereto; build and equip maintenance and transportation facilities; and issue its bonds to the amount of \$140,274,000 for the purpose of paying the costs thereof?

Debe la Junta de Educación del Distrito Escolar de la Unidad Comunitaria de Kaneland Número 302, Condados de Kane y DeKalb, Illinois, alterar, reparar y equipar los edificios escolares y mejorar los sitios de los mismos, incluyendo pero no limitado a reparar y reemplazar la infraestructura y los sistemas mecánicos; reemplazar los techos y actualizar los patios de recreo en los edificios de las escuelas primarias; mejorar los espacios de aprendizaje, los baños, la entrada principal y las instalaciones deportivas en el edificio de Kaneland High School y construir y equipar una casa de campo adicional al mismo; construir y equipar instalaciones de mantenimiento y transporte; y emitir sus bonos por un monto de \$140,274,000 con el fin de pagar los costos de los mismos?

Yes *Si*

No *No*

**(SYC DIST 427) PROPOSITION TO ELECT BOARD MEMBERS AT LARGE**  
(SYC DIST 427) PROPUESTA PARA ELEGIR MIEMBROS DE LA JUNTA EN GENERAL

Shall the members of the Board of Education of Sycamore Community Unit School District No. 427, DeKalb and Kane Counties, Illinois, be elected at large and without restriction by area of residence within the school district?

Los miembros de la Junta de Educación del Distrito Escolar N° 427 de la Unidad Comunitaria de Sycamore, condados de DeKalb y Kane, Illinois, serán elegidos en general y sin restricciones por área de residencia dentro del Distrito escolar?

Yes *Si*

No *No*

**(KANEVILLE FIRE) PROPOSITION TO INCREASE THE LIMITING RATE**  
(INCENDIOS DE KANEVILLE) PROPUESTA PARA AUMENTAR LA TASA LIMITE

Shall the limiting rate under the Property Tax Extension Limitation Law for the Kaneville Fire Protection District, Kane County, Illinois, be increased by an additional amount equal to 0.29% above the limiting rate for fire protection and ambulance purposes for levy year 2023 and be equal to 0.80168% of the equalized assessed value of the taxable property therein for levy year 2025?

Se debería aumentar la tasa de limitación bajo la Ley de Extensión de Impuestos Prediales para el Distrito de Protección contra Incendios de Kaneville, Condado Kane, Illinois, por una cantidad adicional igual a 0.29% por encima de la tasa de limitación para fines de protección contra incendios y ambulancia para el año impositivo 2023 y ser igual a 0.80168% del valor equiparado de la propiedad tasable allí situada para el año impositivo 2025?

Yes *Si*

No *No*

(1) The approximate amount of taxes extendable at the most recent extended limiting rate is \$332,303.42, and the approximate amount of taxes extendable if the proposition is approved is \$520,640.

(2) For the 2025 levy year the approximate amount of the additional tax extendable against property containing a single-family residence and having a fair market value at the time of referendum of \$100,000 is estimated to be \$96.67.

(3) If the proposition is approved, the aggregate extension for 2025 will be determined by the limiting rate set forth in the proposition, rather than the otherwise applicable limiting rate calculated under the provisions of the Property Tax Extension Limitation Law (commonly known as the Property Tax Cap Law).

(1) La cantidad aproximada de impuestos prorrogables bajo la tasa de limitación más reciente es de \$332,303.42, y la cantidad aproximada de impuestos prorrogables si la propuesta es aprobada es de \$520,640.

(2) Para el año impositivo 2025 la cantidad aproximada de impuestos adicionales prorrogables contra las propiedades de residencia familiar sencilla con un valor de mercado \$100,000 al momento del referéndum se estima será de \$96.67.

(3) Si la propuesta es aprobada, la extensión global para el 2025 será determinada por la tasa de limitación postulada en la propuesta, en lugar de la tasa de limitación que de otra manera sería calculada bajo los provistos de la Ley de Extensión de Impuestos Prediales (comúnmente conocida como Property Tax Cap Law).



I HEREBY CERTIFY THAT THIS SPECIMEN BALLOT IS A TRUE AND CORRECT COPY OF THE OFFICES, CANDIDATES AND/OR PROPOSITIONS TO BE VOTED IN THE CONSOLIDATED ELECTION TO BE HELD IN KANE COUNTY ON TUESDAY, APRIL 1, 2025. CERTIFICADO POR LA PRESENTE QUE ESTA BOLETA DE MUESTRA ES COPIA FIEL Y CORRECTA DE LOS PUESTOS, CANDIDATOS Y/O PROPOSICIONES QUE SERÁN SOMETIDAS A LA VOTACIÓN DURANTE LA ELECCIÓN CONSOLIDADA SERÁ CELEBRADA EN EL CONDADO KANE EL MARTES, 1 DE ABRIL DE 2025.

*John A. Cunningham*

JOHN A. CUNNINGHAM  
Kane County Clerk  
Secretario del Condado de Kane

# 3

## Ways to Vote in the Kane County April 1<sup>st</sup> Consolidated Election!



### 1. EARLY VOTING



#### March 7<sup>th</sup> - March 14<sup>th</sup>

Clerk's Office Only (Geneva/Aurora)  
Monday - Friday, 8:30 am - 4:30 pm

#### March 17<sup>th</sup> - March 31<sup>st</sup>

To find ALL Kane County early voting sites, scan the QR Code  
or visit: [clerk.kanecountyil.gov/Elections/Pages/Early-voting.aspx](http://clerk.kanecountyil.gov/Elections/Pages/Early-voting.aspx).



### 2. VOTE BY MAIL

- ◆ **Apply to Vote-by-Mail in ALL ELECTIONS:**

[clerk.kanecountyil.gov/Elections/Documents/PermanentVotebyMailApp.pdf](http://clerk.kanecountyil.gov/Elections/Documents/PermanentVotebyMailApp.pdf)

- ◆ **Apply to Vote-by-Mail for this Election ONLY:**

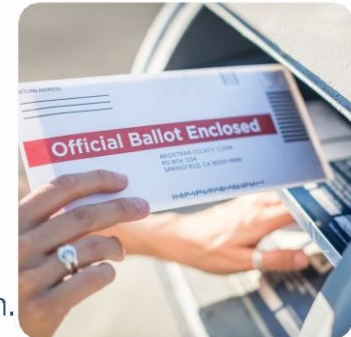
[clerk.kanecountyil.gov/Elections/Pages/Vote-by-Mail.aspx](http://clerk.kanecountyil.gov/Elections/Pages/Vote-by-Mail.aspx).

You can also apply in person or by phone. You do not need to apply if you are already signed up for the Permanent Vote-by-Mail program.

- ◆ **Track your ballot:** [votekane.ballottrax.net/voter](http://votekane.ballottrax.net/voter)

- ◆ **Deadline to request a ballot:** March 27<sup>th</sup> at 2:30 pm.

- ◆ **Return ballot postmark must be on or before:** April 1, 2025.



### 3. ELECTION DAY



- ◆ **Polls are open 6 am - 7 pm on April 1<sup>st</sup>.** You can vote at ANY Election Day polling location in Kane County.

- ◆ **Find the polling location closest to your residence:**  
[clerk.kanecountyil.gov/Elections/Pages/Voter-Search.aspx](http://clerk.kanecountyil.gov/Elections/Pages/Voter-Search.aspx)

- ◆ **A list of all Kane County polling places:**  
[clerk.kanecountyil.gov/Elections/Pages/Election-Day-Voting.aspx](http://clerk.kanecountyil.gov/Elections/Pages/Election-Day-Voting.aspx)



(630) 232-5990



[clerk.kanecountyil.gov/Elections](http://clerk.kanecountyil.gov/Elections)



# Verity Duo Voting Process

## Proceso de votación de Verity Duo

1. To start the voting process, the voter must fill out and sign an application. At the Verity Duo Voting Booth, the voter uses the **TOUCH SCREEN** to select a language. Then the **ACCESS CODE** (provided by the poll worker) is entered. The ballot from the voter's precinct appears on the screen.

1. Para iniciar el proceso de votación, el votante debe completar y firmar una solicitud.

En la cabina de votación de Verity Duo, el votante utiliza la **PANTALLA TÁCTIL** para seleccionar un idioma. Luego se ingresa el **CÓDIGO DE ACCESO** (proporcionado por el trabajador electoral). La boleta del distrito electoral aparece en la pantalla.



7. The voter is finished voting and has **CAST THE BALLOT** when the **WAVING AMERICAN FLAG APPEARS ON THE SCREEN**.

7. El votante ha terminado de votar y ha **EMITIDO EL VOTO** cuando **APAREZCA LA BANDERA AMERICANA ONDANDO**



2. Voter will be instructed to insert the **BALLOT PAPER**. When ready, select **BEGIN VOTING**.

2. Se le indicará al votante que inserte la **BOLETA DE VOTACIÓN**. Cuando esté listo, seleccione **COMENZAR A VOTAR**.



6. At the **SCAN STATION**: The Voter should **INSERT THE PRINTED BALLOT INTO THE SCANNER** as directed on the screen.

6. En la **ESTACIÓN DE ESCANEO**: El Votante debe **INSERTAR LA BOLETA IMPRESA EN EL ESCÁNER** como se indica en la pantalla.



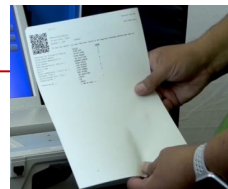
Verity Duo Voting Booth & Verity Scan Station

3. Follow the Prompts on the screen using the **TOUCH SCREEN** to make selections USING the **REVIEW & NEXT** buttons to move back & forth between ballot pages.

3. Siga las indicaciones en la pantalla usando la **PANTALLA TÁCTIL** para hacer selecciones USANDO los botones **REVISAR** y **SIGUIENTE** para avanzar atrás y adelante entre las páginas de la boleta.

5. The Voter should **REVIEW THE PRINTED BALLOT** before reaching the **SCAN STATION**.

5. El votante debe **REVISAR LA BOLETA IMPRESA** antes de llegar a la **ESTACIÓN DE ESCANEO**.



4. After all selections are made, a Ballot Summary will appear on the Screen for voter review. When the voter is satisfied with the choices selected, the Verity Duo will **PRINT** a record of the voters choices by contest directly on the **BALLOT PAPER**. **IMPORTANT: THE VOTE HAS NOT YET BEEN CAST!!**

4. Después de realizar todas las selecciones, aparecerá un resumen de la boleta en la pantalla para que los votantes revisen. Cuando el votante esté satisfecho con las opciones seleccionadas, Verity Duo **IMPRIMIRÁ** un registro de las opciones de los votantes directamente en la **BOLETA DE VOTACIÓN**. **¡¡IMPORTANTE: EL VOTO AÚN NO SE HA EMITIDO!!**

Press the **HELP** button to get instructions on the screen or to ask for help from a poll worker.

Presione el botón **AYUDA** para obtener instrucciones en la pantalla o para pedir ayuda a un trabajador electoral.

**AMERICAN DISABILITY (ADA) COMPLIANT/  
LEY (ADA) DE DISCAPACIDAD  
ESTADOUNIDENSE OBEDIENTE**



Access™

Headphones

Tactile Switches

Sip and Puff Device

**THANK YOU FOR VOTING!**  
**GRACIAS POR VOTAR!**



**Kane County Clerk**  
Secretario del Condado de Kane



**www.KANEVOTES.org**

Legal Notice and Information Guide (PRINTED IN SPANISH REQUIRED BY FEDERAL LAW)  
Aviso Legal y Guía Informativa para el Votante (IMPRESIÓN EN ESPAÑOL REQUERIDA POR LEY FEDERAL)